



# EARLY CHILDHOOD COMMITTEE

---

Committee Report to Board of Commissioners

September 5, 2023

Presenters: Martin Moore, Carol Steen  
& Buncombe Partnership for Children



# BUNCOMBE COUNTY STRATEGIC PLAN

Community Focus Area

Educated and Capable Community

**GOAL: INCREASE KINDERGARTEN READINESS**

# EARLY CHILDHOOD FUND

- Resolution # 18-10-16, adopted October 30, 2018
- Authorized the creation of an **Early Childhood Education and Development Fund** for the purpose of annually investing \$3.6 million, beginning in the FY2020 budget with an annual increase of 2% in future years



# EARLY CHILDHOOD COMMITTEE

15-member committee charged with:

- **engaging with community partners,**
- **soliciting public input, and**
- **making policy and funding recommendations to the Board of Commissioners**



# FUNDING STRATEGIES

Support early care & education for children birth through kindergarten with an emphasis on pre-kindergarten:

- Increase **slots** for enrollment
- Increase **quality**
- Develop/diversify early childhood **workforce**
- Support **families**
- Enhance effectiveness of overall **system**



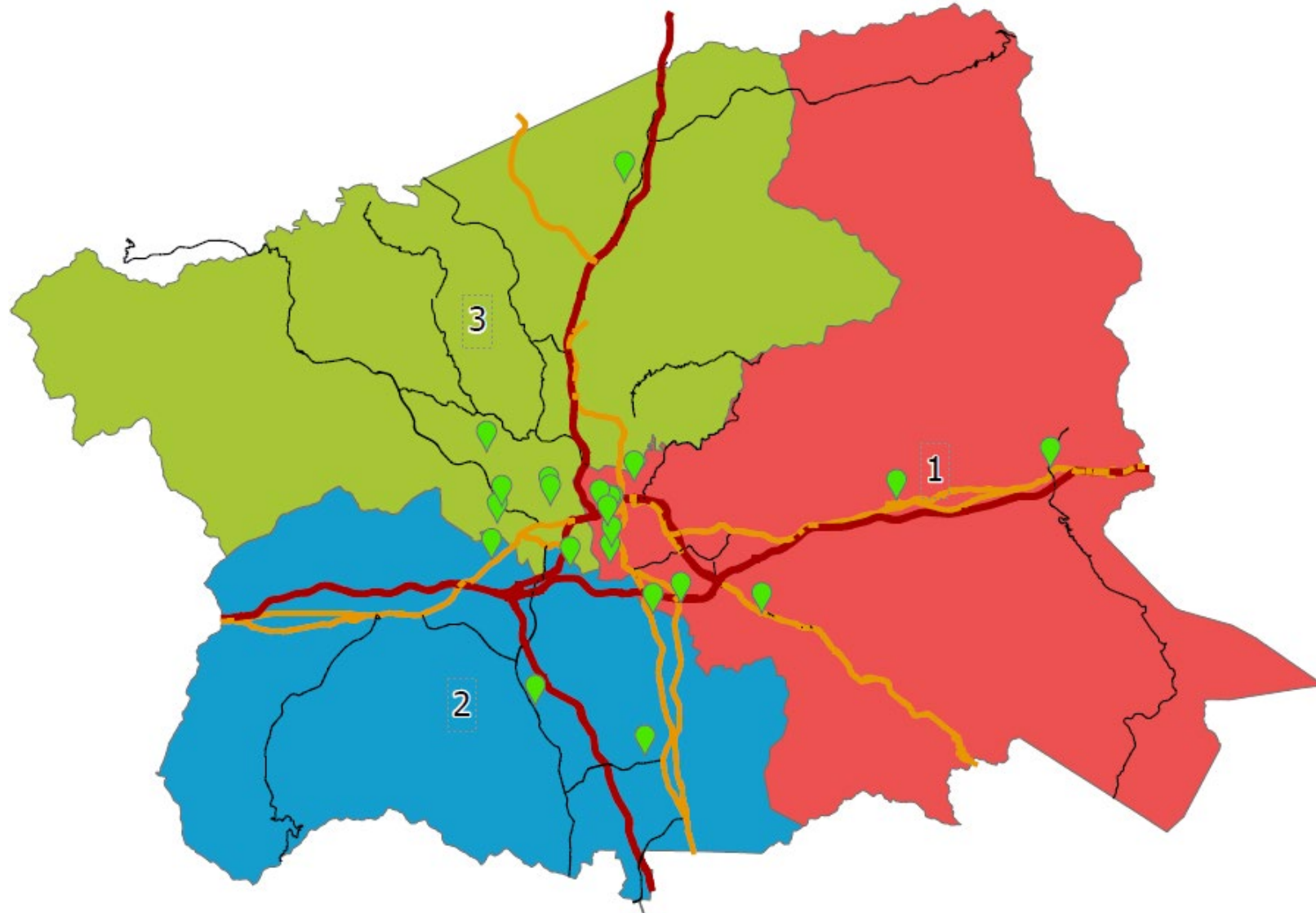
# FY2023 GRANTEES

Fiscal Year July 1, 2022 – June 30, 2023 (FY2023)

- AB Tech
- Asheville Jewish Community Center
- Bent Creek Preschool
- Buncombe County Schools/ Verner Center for Early Learning
- Buncombe Partnership for Children
- Colaborativa la Milpa
- Community Action Opportunities
- Eliada Homes
- Evolve Early Learning
- FIRST
- Irene Wortham Center
- On Track Financial Education & Counseling
- Read to Succeed
- Southwestern Child Development
- Swannanoa Valley Child Care Council (Donald S Collins Center)
- The Christine Avery Learning Center
- YWCA



# LOCATION OF FUNDED PROJECTS



# FUNDED PROJECTS



- Behavioral health support
- Classroom supplies & furnishings
- Cooperative & home-based care
- Curriculum, assessments & licensing
- Matched savings program
- Outdoor space
- Outreach & parent engagement
- Student nutrition
- Teacher pay
- Technology
- Workforce development for existing & new professionals





# PERFORMANCE REPORTING

- Grant awards are administered via **performance contracts**
- Grantees submit **quarterly reports** on project performance
- Grant reports are published on the Early Childhood Fund website at [www.buncombecounty.org/grants](http://www.buncombecounty.org/grants)



# PERFORMANCE RESULTS

Fiscal Year July 1, 2022 – June 30, 2023 (FY2023)



**69% of all goals were met  
across 22 funded projects**

- Most difficult goals to attain this year were around enrollment, attendance & staffing
- Good success on goals related to student achievement



# SUCCESS EXAMPLES

Fiscal Year July 1, 2022 – June 30, 2023 (FY2023)

**292** Parents improved their education or income status  
(YWCA)

**7** Classrooms received new technology  
(Bent Creek Preschool)

**17** Participants in the bilingual early childhood cooperative network  
(Colaborativa la Milpa)

**100%** of staff who earn a living wage  
(The Christine Avery Learning Center)

**13** Individuals received Start-Up Technical Assistance  
(Partnership for Children)

**22** Early care & education professionals and parents completed the matched savings program (On Track)



# NC PRE-K EXPANSION IN BUNCOMBE

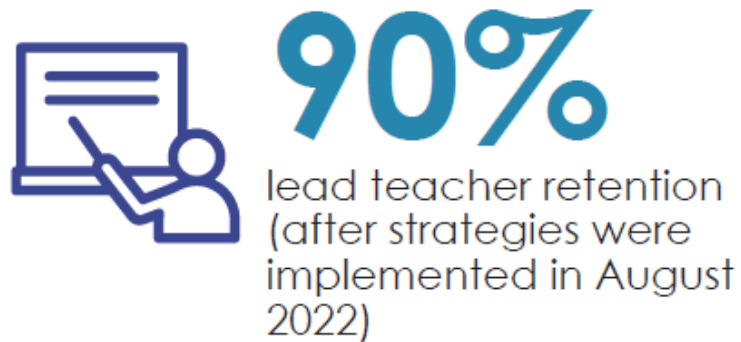
- Partnership for Children was awarded \$3.2M ARPA COVID Recovery Funding through Buncombe County
- 2-year pilot project, FY2023-FY2024
- Intended to increase stability and equity, expand high-quality providers and licensed teachers, and make it easier for eligible families to take advantage of NC Pre-k's proven benefits
- Year One report is online: [www.buncombecounty.org/prekreport](http://www.buncombecounty.org/prekreport)



# NC PRE-K EXPANSION IN BUNCOMBE

## Strategy 1:

## Fully Funded NC Pre-K



# NC PRE-K EXPANSION IN BUNCOMBE

## Strategy 2: Higher Ed Supports



**26**

participants enrolled (avg. years experience: 10.7)



**54**

additional teachers have expressed interest



**100%**

responded they are more likely to keep teaching in ECE because of supports.



# NC PRE-K EXPANSION IN BUNCOMBE

## Strategy 4:

## Coordinated Outreach & Enrollment



**638**

apps submitted; goal for FY23-24 is 680, the pre-COVID high



**88%**

of applicants were placed at their first choice



**17%**

of applicants were English language learners



# NC PRE-K EXPANSION IN BUNCOMBE

## Strategy 3: Ramp up to NC Pre-K



**10** classrooms will participate in ramp up

## Strategies 5-6: Wrap-around & transport



**60** families will participate in pilot programs







**Thank you!**



**BUNCOMBE COUNTY**

