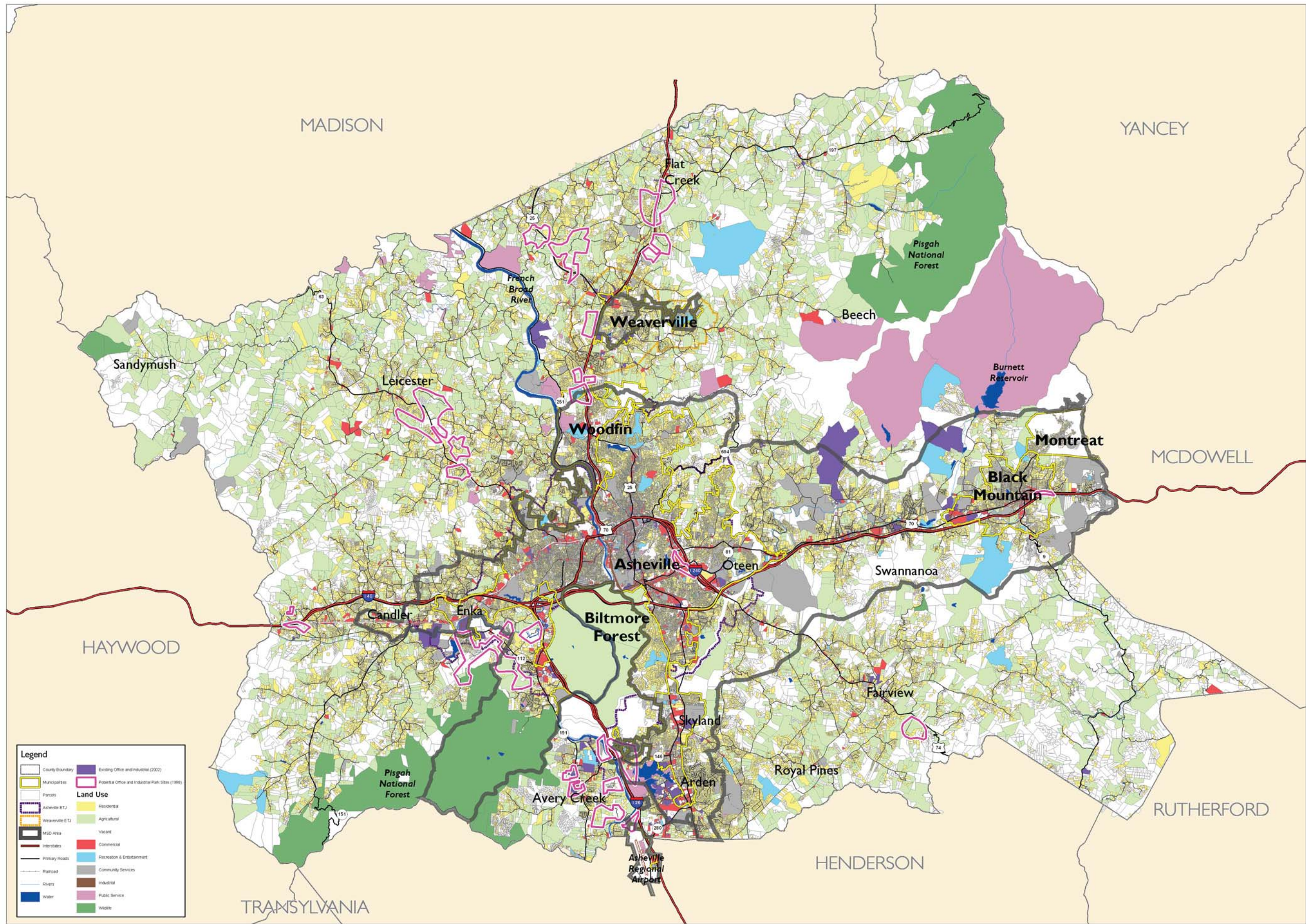


Legend

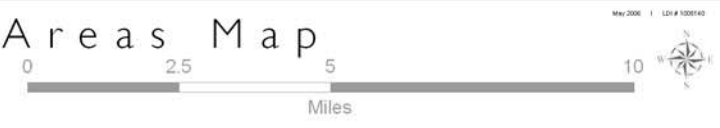
- County Boundary
- Municipalities
- Asheville ETJ
- Weaverville ETJ
- MCD Area
- Interstates
- Primary Roads
- Railroad
- Rivers
- Water
- Buncombe Schools
- Parks and Recreation
- Colleges & Universities
- Watauga Riverway
- State & Federal Open Space
- Recreational Facilities
- Community Services

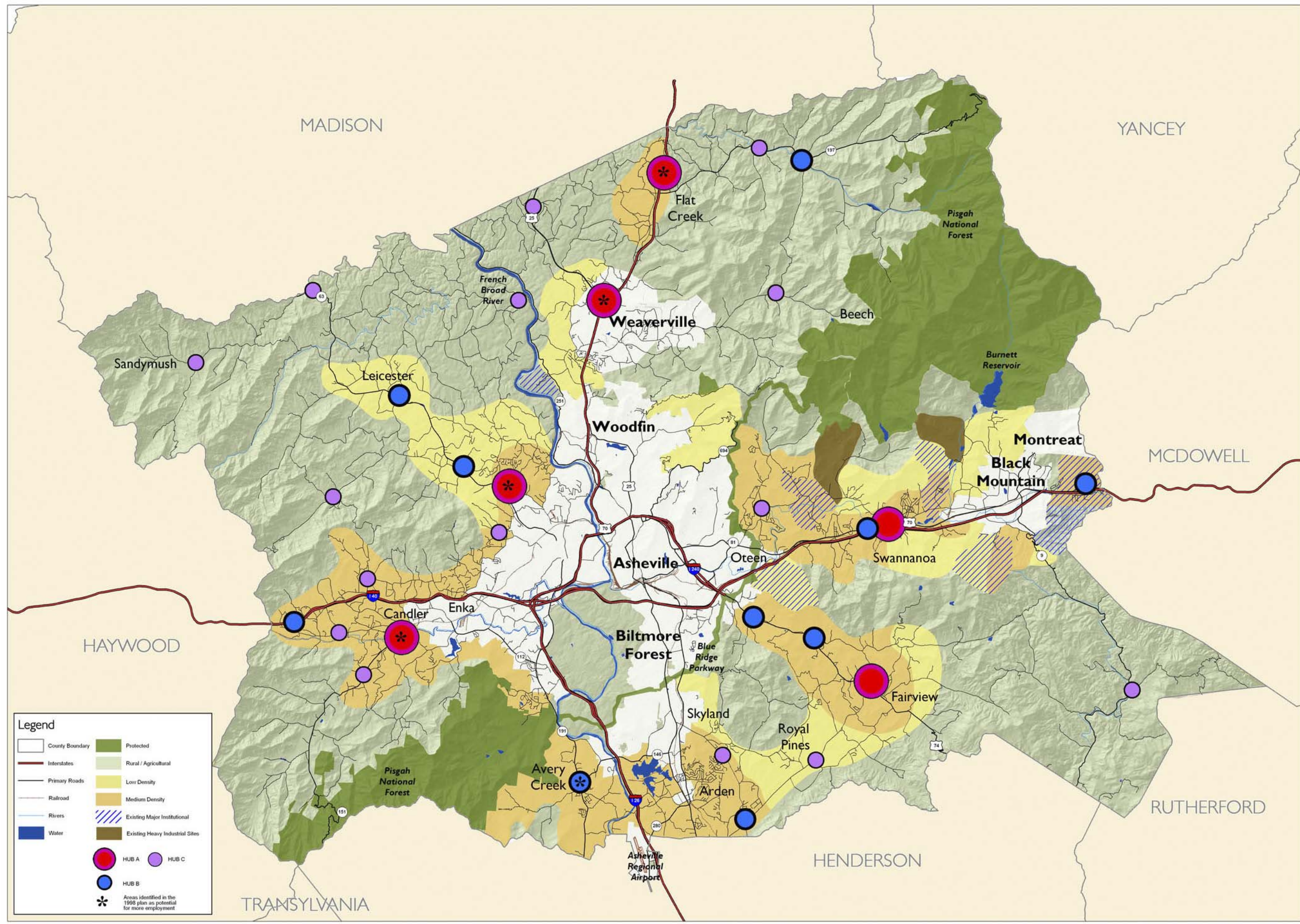
Note: Recreation Facilities and Community Services Lands Based on 2002 Existing Land Use Records



LandDesign.
 205 North Graham St
 Charlotte, NC 28204
 Phone: 704.375.7777
 Fax: 704.375.7777
 Web: www.landdesign.com

Existing and Potential Industrial and Office Areas Map
 Comprehensive Land Use Plan Update
 Buncombe County, North Carolina



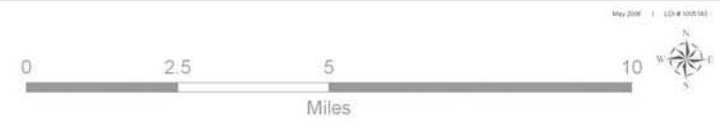


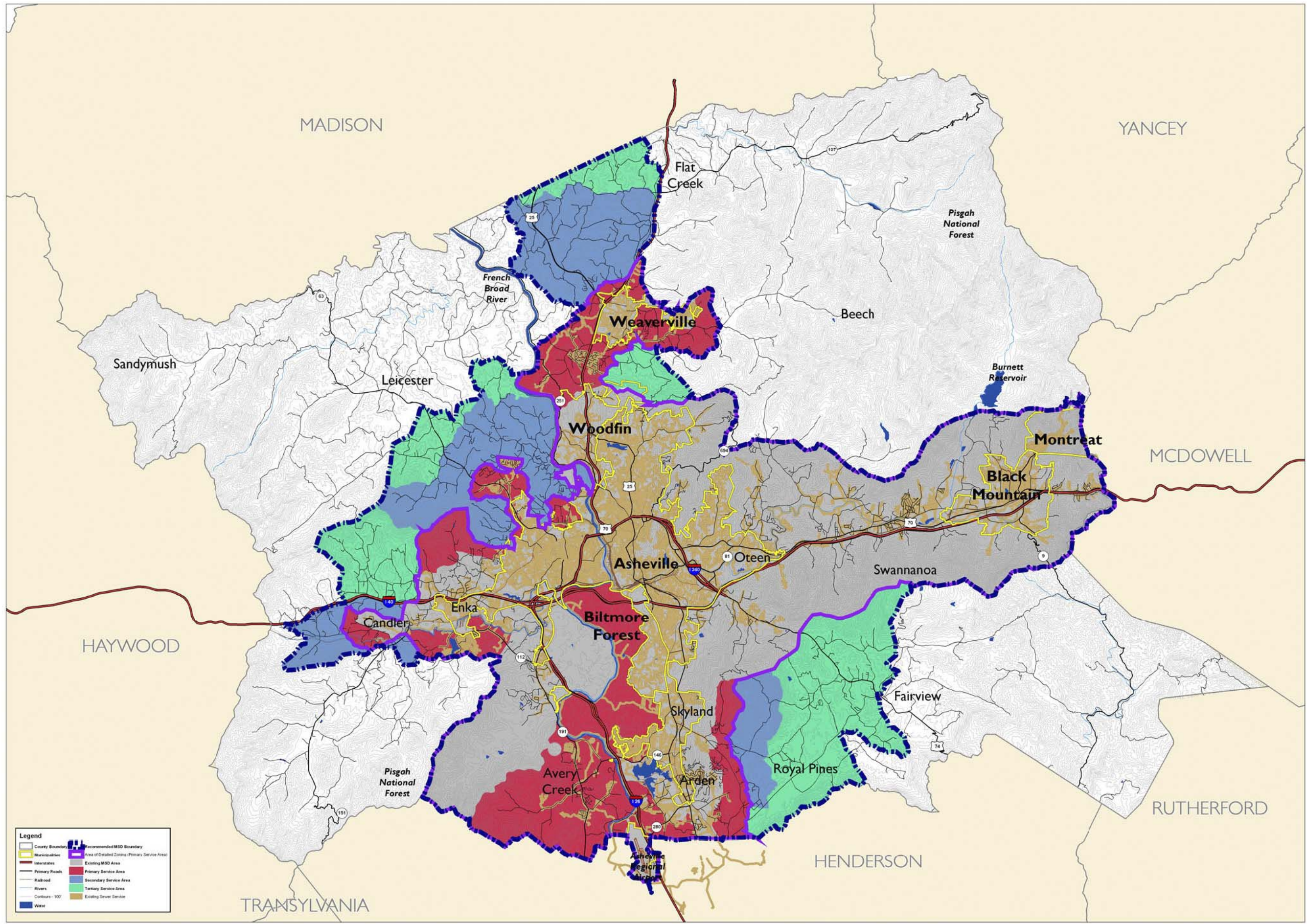
Legend

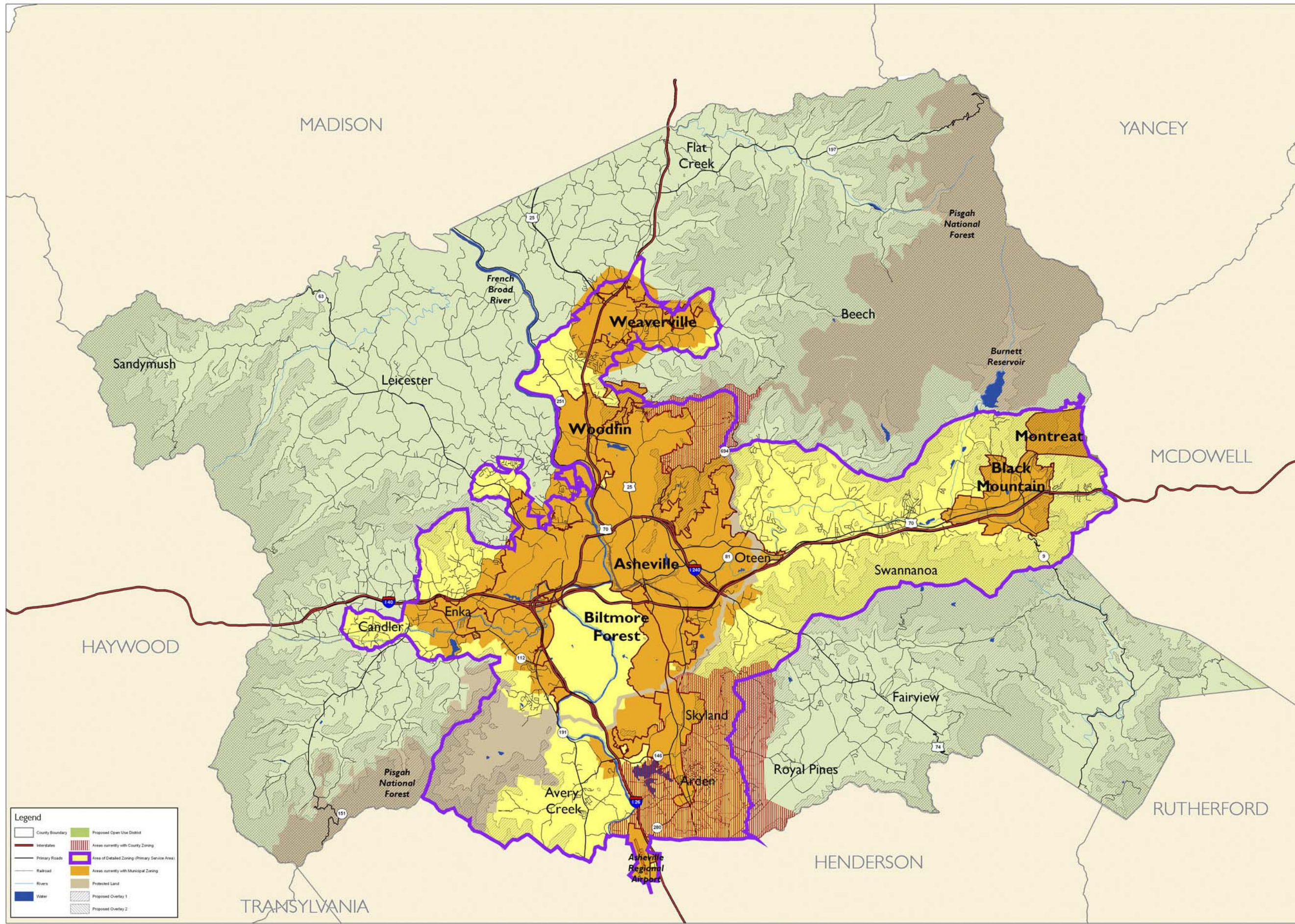
- County Boundary
- Interstates
- Primary Roads
- Railroad
- Rivers
- Water
- Protected
- Rural / Agricultural
- Low Density
- Medium Density
- Existing Major Institutional
- Existing Heavy Industrial Sites
- HUB A
- HUB B
- HUB C
- Areas identified in the 1998 plan as potential for more employment

LandDesign.
 225 North Oxford St
 Charlotte, NC 28205
 Phone: 704.333.0222
 Fax: 704.333.0228
 Email: info@landdesign.com

Proposed Land Use Map
 Comprehensive Land Use Plan Update
 Buncombe County, North Carolina







Legend

LandDesign.
 225 North Orleans St
 Charlotte, NC 28202
 Phone: 704.333.0225
 Fax: 704.333.0228
 Email: info@landdesign.com

Proposed Zoning Concept Map
 Comprehensive Land Use Plan Update
 Buncombe County, North Carolina

