



# Comp Plan – PB Update

*Presented by*

**Nathan L. Pennington, CFM**

**Planning Director**





<https://www.youtube.com/watch?v=UtzVZLxTQIY>



# We are Just Getting Started

We are Here



# PLANNING PROCESS



Proposed Schedule. Community Engagement Windows may be extended or number of meetings may be increased based on evaluation of input received

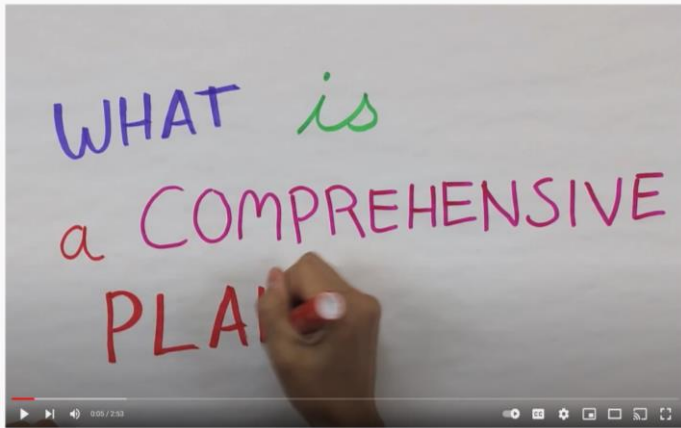


# ✓ PHASE 1 LAUNCH - Complete

- Department Roadshows
- BOC interviews and Stakeholder Interviews
- Information and Data Gathering
- Kick Off Meetings in October
- Branding and Logo



# PHASE 1- Getting the Word Out



**Comp Plan Video**



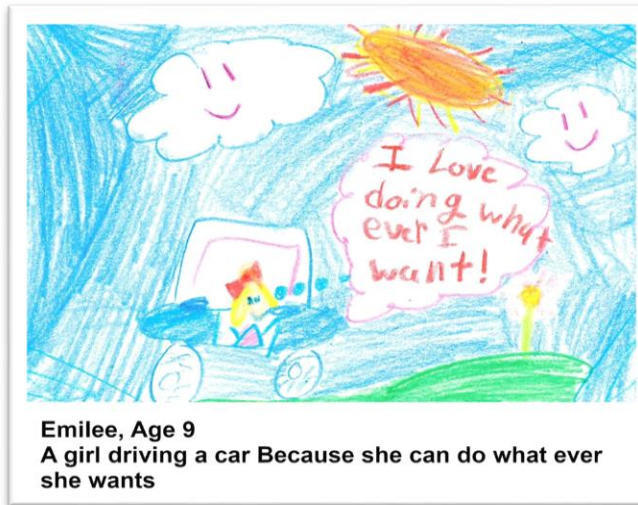
**Kids Visioning Events**



**Weekly Newsletter**



**Asheville Holiday Parade**



Emilee, Age 9  
A girl driving a car Because she can do what ever she wants

**Kids Postcard Project**



**Postcards and Posters**

# Phase 2-Engagement Input Opportunities

## Engagement Window #1-Vision and Goals Mid December to Mid February

### Stakeholder Interviews & Survey

County staff facilitated engagement; Outreach by Community Ambassadors

### Community Vision Word Cloud

Hybrid Workshops (3), Targeted Meetings (3) & Online Activities -*Week of January 10th*

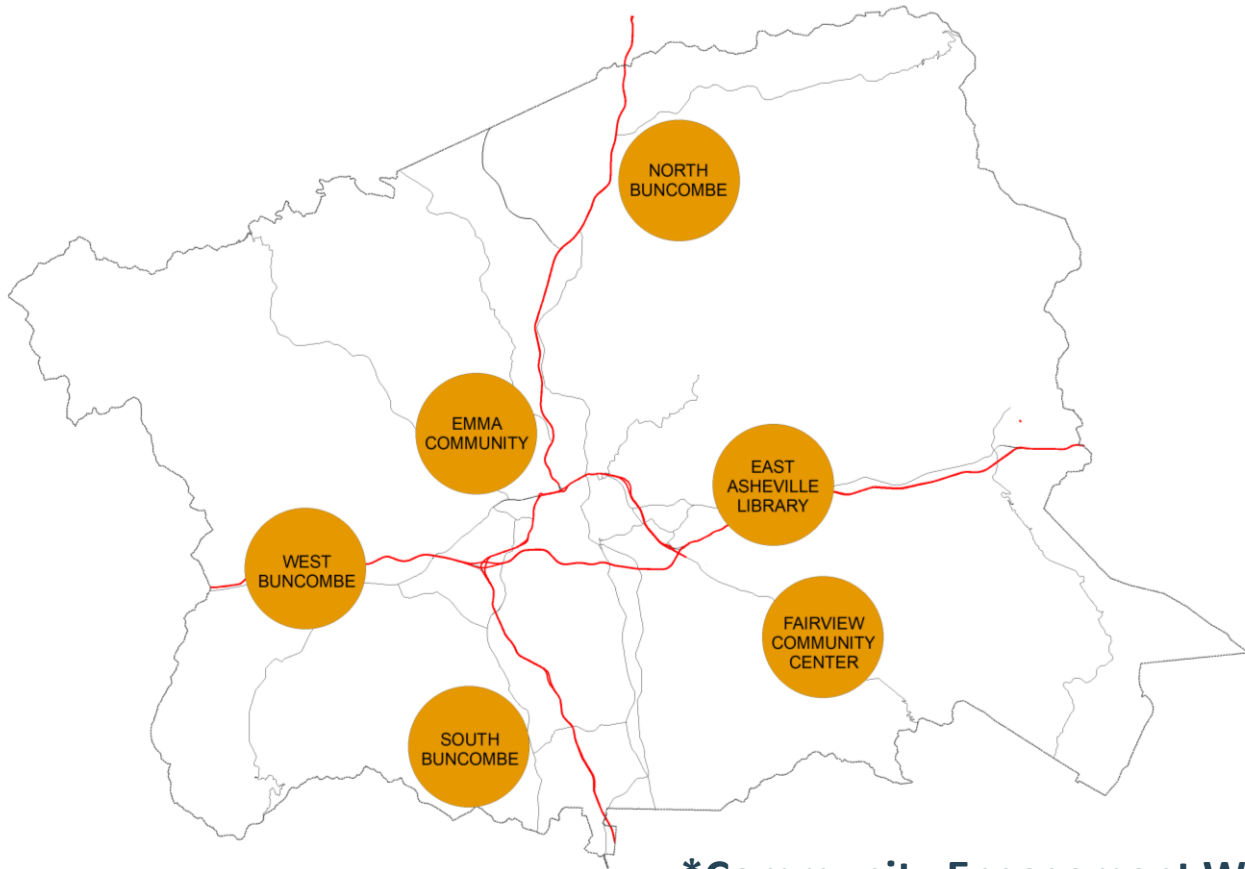
- Community poll
- Small group discussions
- Mapping exercise

Spanish translation of materials and interpretation services provided at all events



# Phase 2 - Community Engagement Window #1

## Meeting Locations Week of January 10th



### Hybrid Public Workshops (3)

In-person & Virtual Attendees  
North BC - West BC - East BC

### Targeted Community Meetings (3)

- Harder to reach populations proposed:
- Rural (Fairview Community)
- Historically Disenfranchised Community (Emma Community)
- Youth (High School Students-Skyland Library)

\*Community Engagement Windows may be extended or number of meetings may be increased based on evaluation of input received





# Phase 2 - Stakeholder Organization Survey

- Targeted to organizations with an interest in the County's future, for example:
  - Neighborhood associations
  - Businesses and business organizations
  - Nonprofits
  - Civic groups
  - Environmental groups
  - Equity/Inclusion groups
  - Public safety groups
  - Buncombe County Boards and Commissions
  - Other groups that have a stake in the future of Buncombe County
- Purpose: Provide Input for the foundation for policy direction
- Public Input survey that can be distributed to organizations
- Ongoing
- Currently 176 groups identified for survey distribution



# COUNTY RESIDENTS

*vision*

*needs*

*wants*

*ideas*

## RESIDENT STEERING COMMITTEE



*feedback discussion*  
*ideas networking*

## PLANNING BOARD



*goal/objective dev*  
*recommendations*  
*implementation*

## COMMISSIONERS



*review*  
*feedback*  
*adoption*

## STAFF



*support*  
*drafting*  
*analysis*  
*implementation*

## TECHNICAL EXPERTS



*analysis*  
*data*  
*expertise*

## AMBASSADORS



*networking*

*spreading the word*

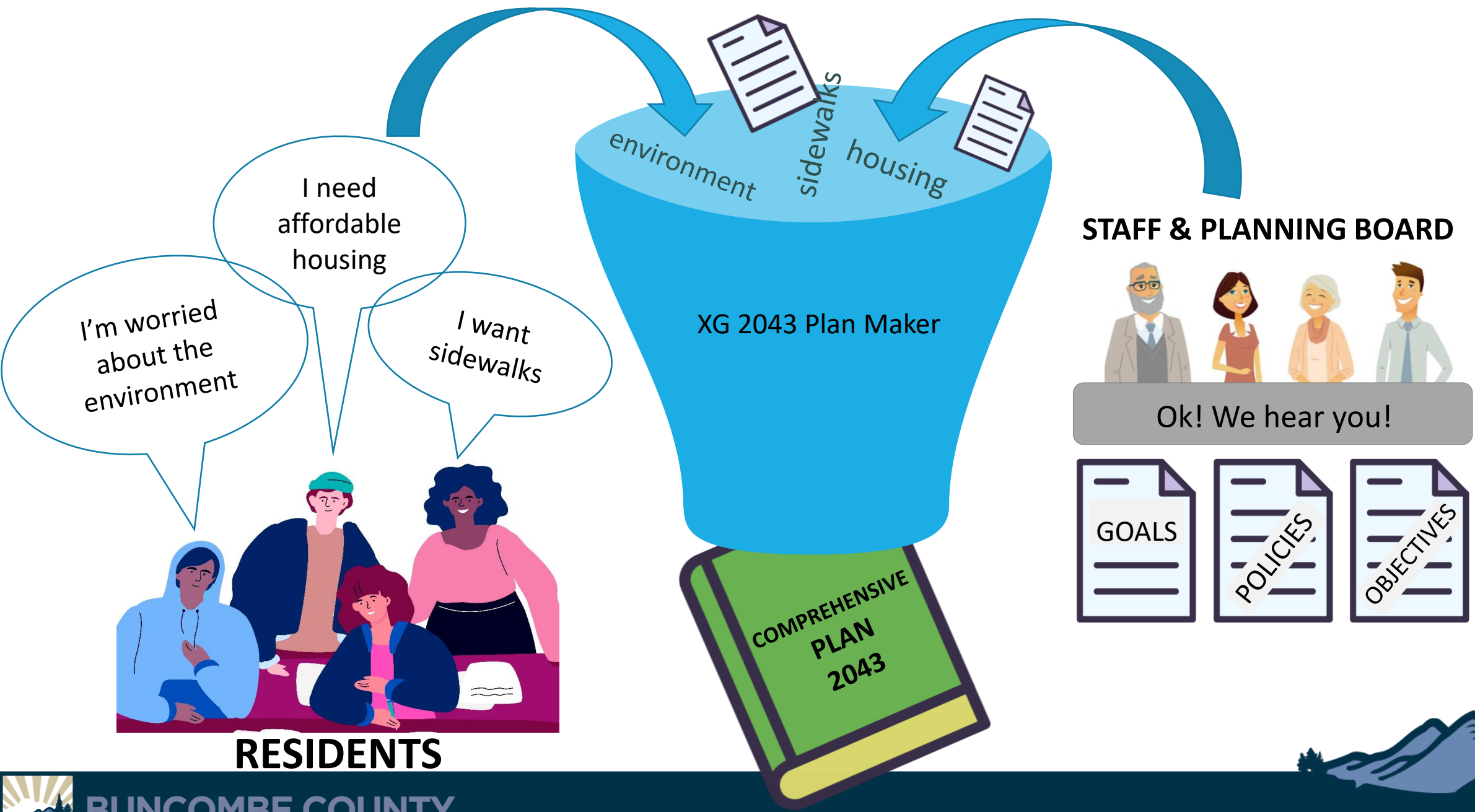


*community insight*

# Roles of the Planning Board and Others

- Sec. 58-15, BC Code of Ordinances
- Make studies of the area within its jurisdiction – in process
- Determine objectives to be sought in the development of the study area.
- Prepare and adopt plans for achieving these objectives.
- 160D-5-1. Plans NCGS
- The planning process shall include opportunities for citizen engagement in plan preparation and adoption.
- A local government may prepare and adopt other plans including small area plans, recreation and open space plans, hazard mitigation plans, etc.
- Plans shall be adopted by the governing board with the advice and consultation of the PB.





# How Wants and Needs Translate to Objectives

- Community expresses a need (ex. we want sidewalks)
- Feedback is gathered and bundled
- Staff sorts and prioritizes
- Goal/priority setting begins with the PB (ex. identify linkages and corridors)
- Goals, objectives and policies are formulated and translated into the plan
- Text amendments follow after plan is complete



# PLANNING PROCESS ROLES



# PLANNING PROCESS ROLES

**Provide Inputs –  
Foundation for  
Policy Direction**

Residents and Property Owners



**Provide Inputs –  
Foundation for  
Policy Direction**



**Provide Inputs –  
Foundation for  
Policy Direction**

Stakeholder Organizations

Residents and Property Owners





**Reviewers &  
Guiders of Plan  
Development**

Steering  
Committee

Stakeholder Organizations

Residents and Property Owners

**Provide Inputs –  
Foundation for  
Policy Direction**



**Provide Inputs –  
Foundation for  
Policy Direction**



**Reviewers &  
Endorsers of Plan  
Development**

**Reviewers &  
Guiders of Plan  
Development**

Planning Board

Steering  
Committee

Stakeholder Organizations

Residents and Property Owners

**Provide Inputs –  
Foundation for  
Policy Direction**



**Provide Inputs –  
Foundation for  
Policy Direction**



**Adopters &  
Implementors of  
Plan**

Board of  
Commissioners

**Reviewers &  
Endorsers of Plan  
Development**

Planning Board

**Reviewers &  
Guiders of Plan  
Development**

Steering  
Committee

Stakeholder Organizations

Residents and Property Owners

**Provide Inputs –  
Foundation for  
Policy Direction**



**Provide Inputs –  
Foundation for  
Policy Direction**



**Adopters & Implementors of Plan**

Board of Commissioners

**Reviewers & Endorsers of Plan Development**

Planning Board

**Reviewers & Guiders of Plan Development**

Steering Committee

Stakeholder Organizations

Staff and Consultants

**Technical Assistance and Facilitation**

Residents and Property Owners

**Provide Inputs – Foundation for Policy Direction**



**Provide Inputs – Foundation for Policy Direction**



# PLANNING PROCESS ROLES

Board of  
Commissioners

Planning Board

Steering  
Committee

Stakeholder Organizations

Staff and  
Consultants

Residents and Property Owners



# Future TBD Items

- Joint meetings with the Steering Committee
- Joint meeting with the BOC
- Goal/Policy/Objective setting – Staff and Planning Board



# Questions

