



Our Voices • Our Vision

**COMPREHENSIVE PLAN-Planning Board Updated
Phase 2 Update
Phase 3 –What’s Coming Up**

Gillian Phillips-Long Range Planning
Division Manager



Planning Process



✓ PHASE 2 VISION AND GOALS-In Progress

- Assessed existing conditions-Completed
 - Gathering information about existing conditions, including historical context
 - Draft Factbook completed
 - Draft Policy Guide completed
- Input Opportunity (Vision and Goals)-Completed
 - Helped identify future planning influences/issues
- Develop plan framework Vision and Goals-In Progress

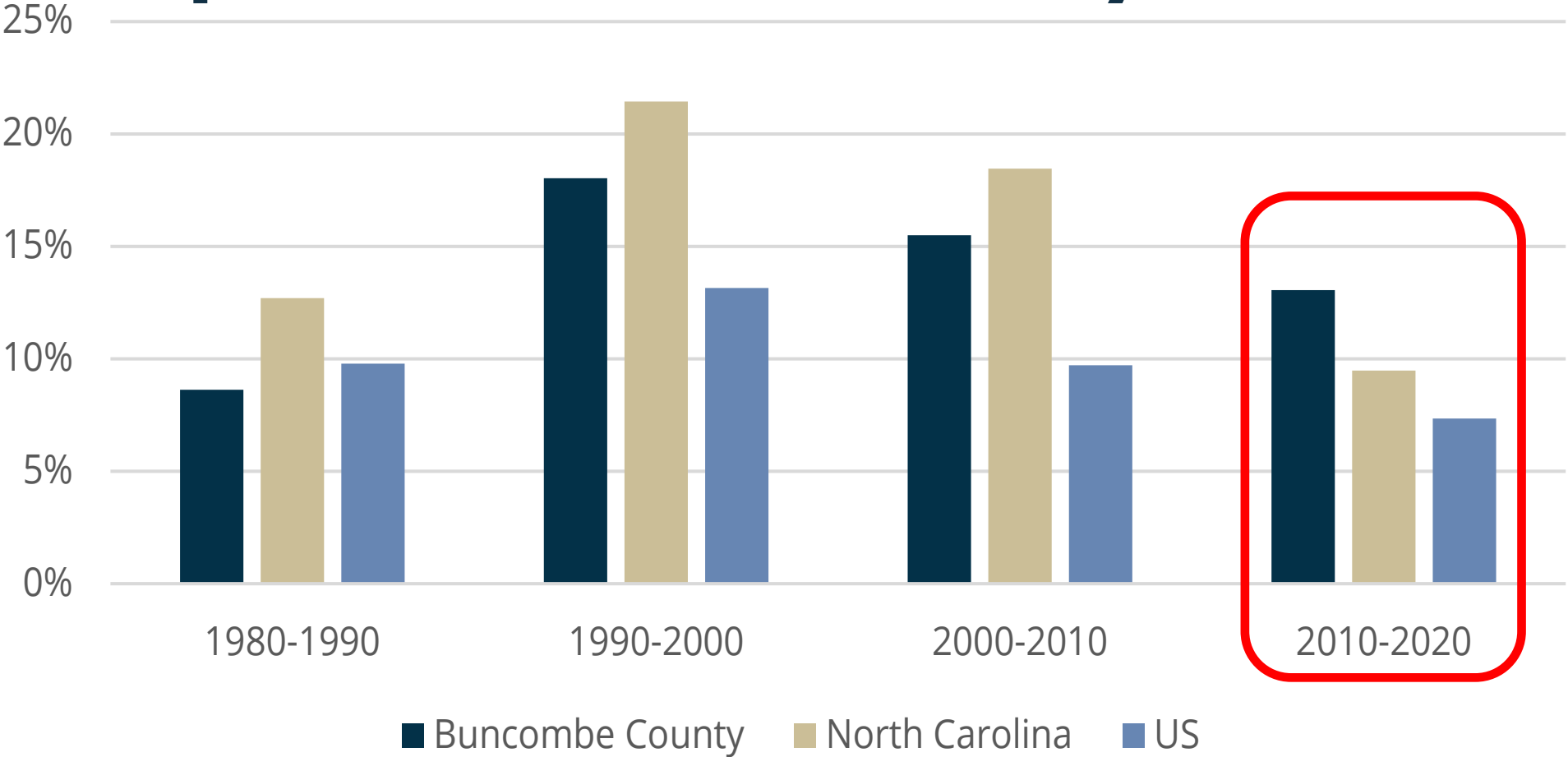


PLANNING INFLUENCES

What trends and influences could affect
Buncombe's future?



Population Growth by Decade



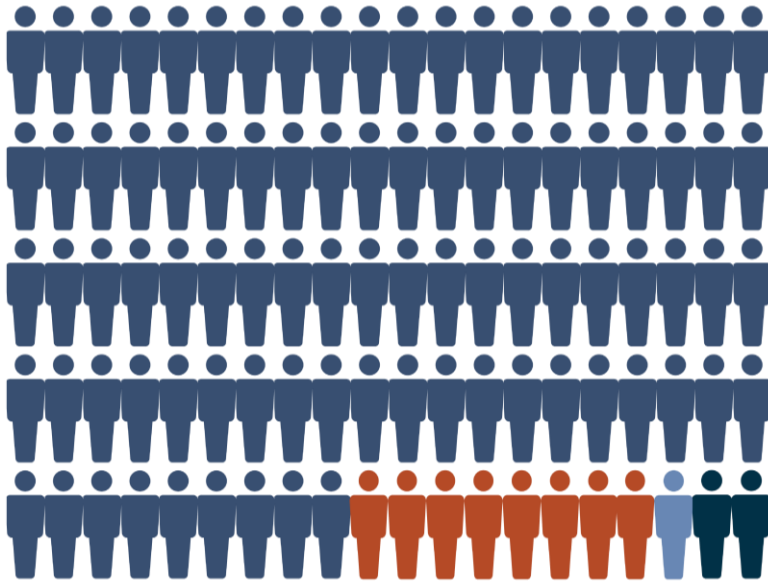
Buncombe's 2020 Population: 269,452



Population Change by Race

2000

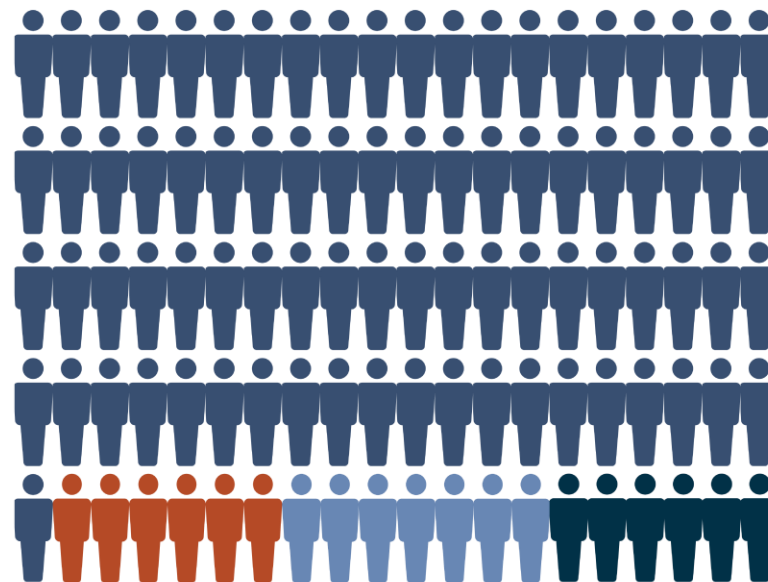
89% White
7% Black or African American
1% Two or more races
2% Some other race



Total Population: 206,330

2020

81% White
6% Black or African American
7% Two or more races
6% Some other race



Total Population: 269,452



White



Black or African American



Two or more races

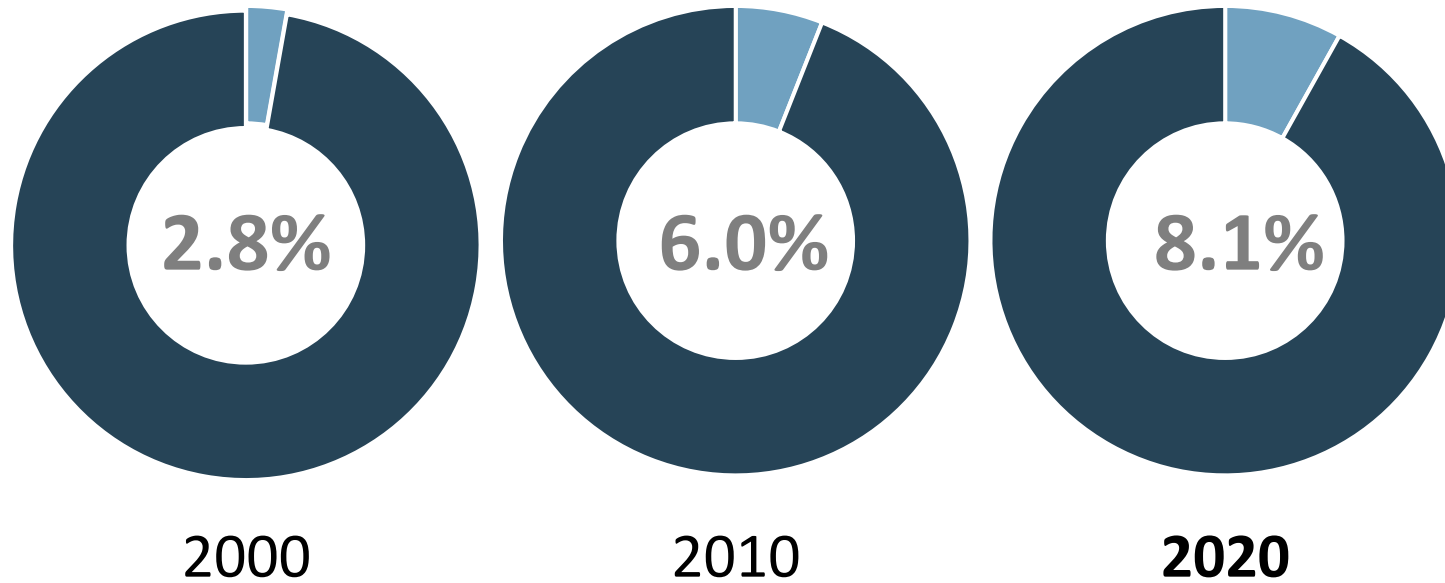


Some other race



Population Change by Ethnicity

Percent Hispanic/Latino Ethnicity



2000, 2010, and 2020 U.S. Census



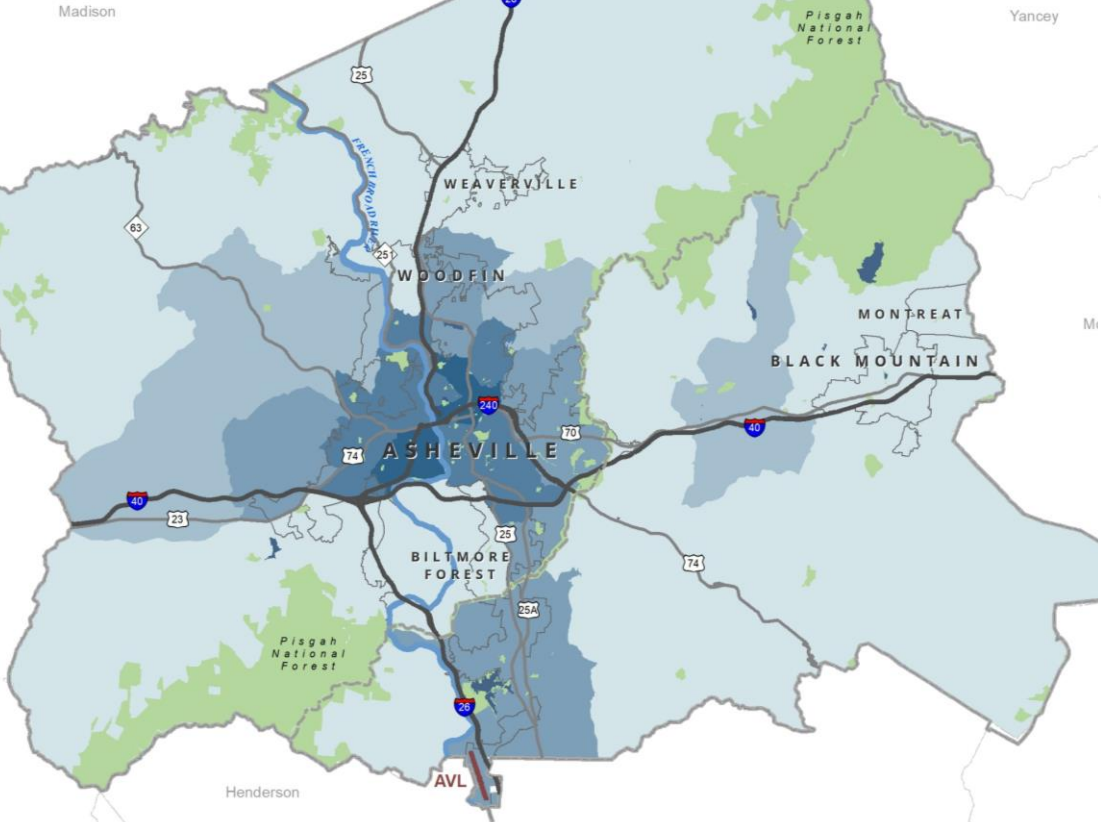
BUNCOMBE COUNTY



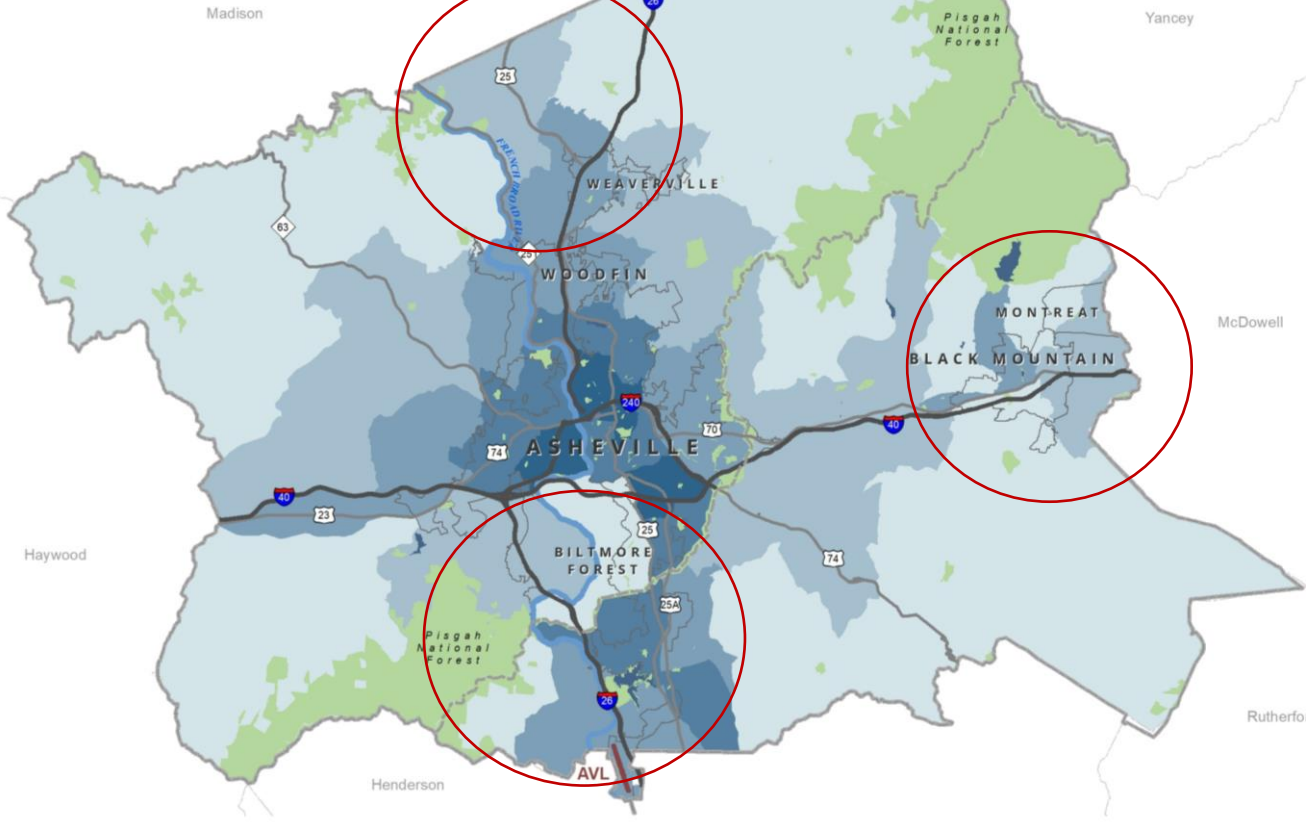
10/18/2022

Population Density

2000



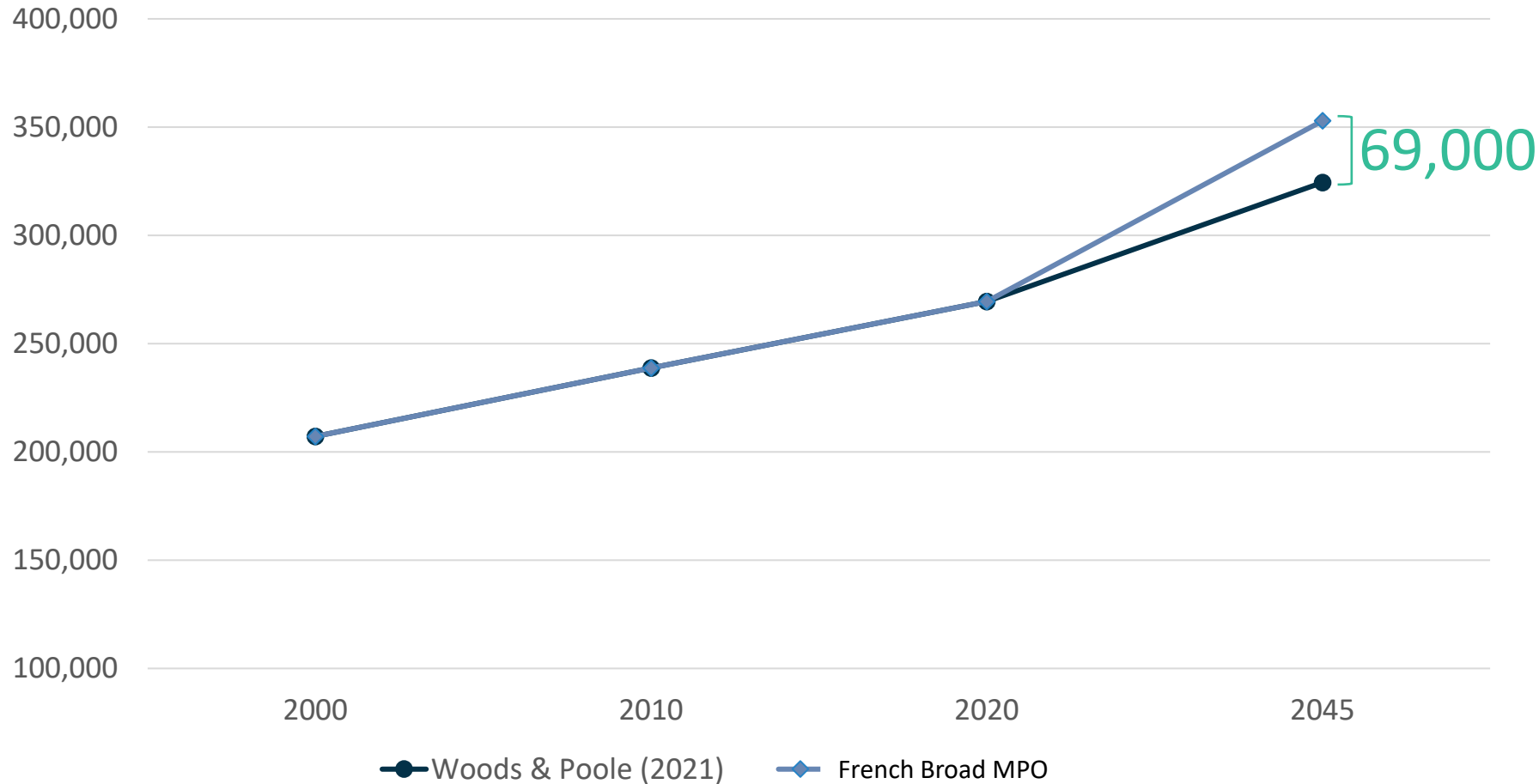
2020



2000 and 2020 Census



Projected Population Growth



83,000+

High Projection, 2045

55,000+

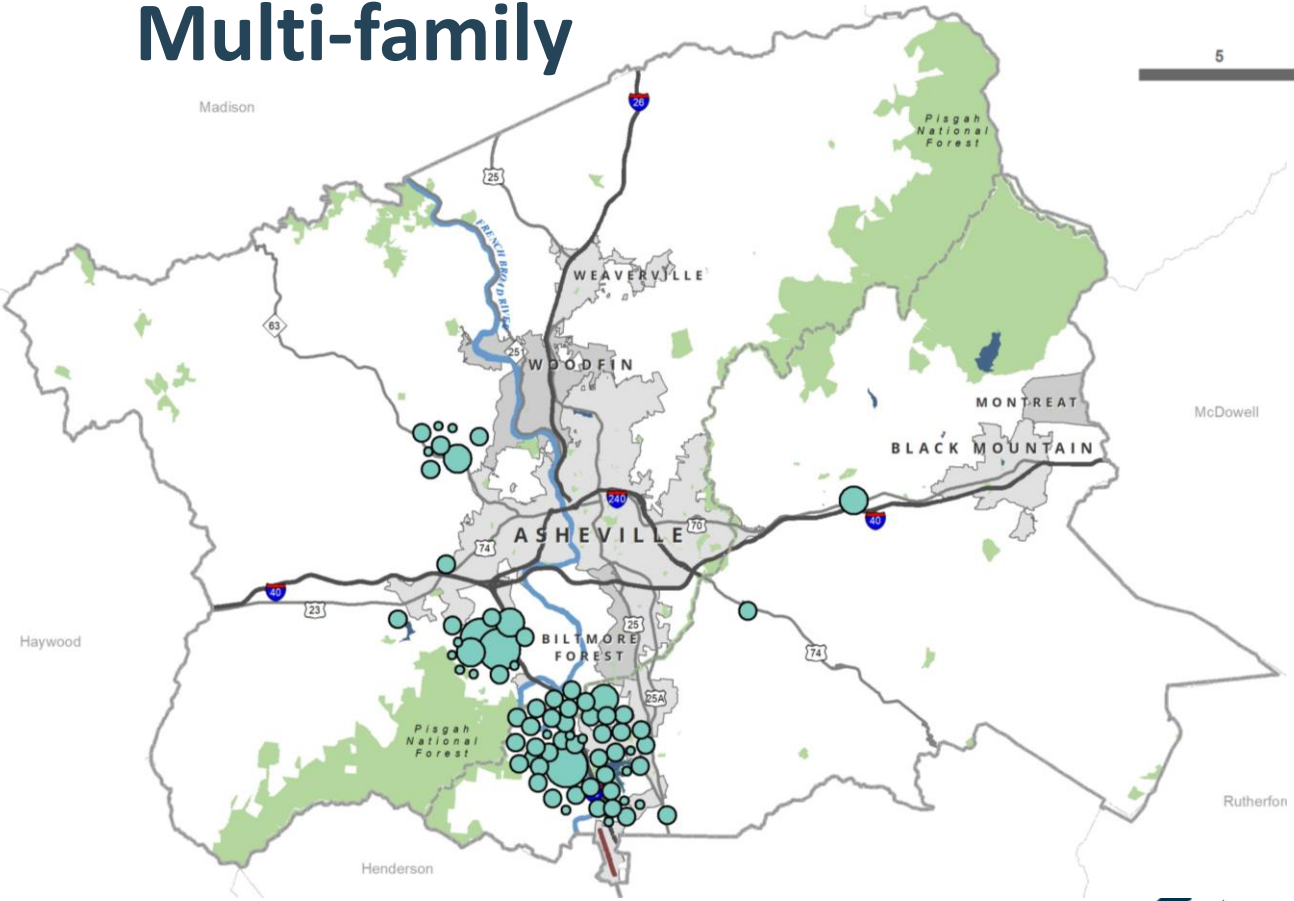
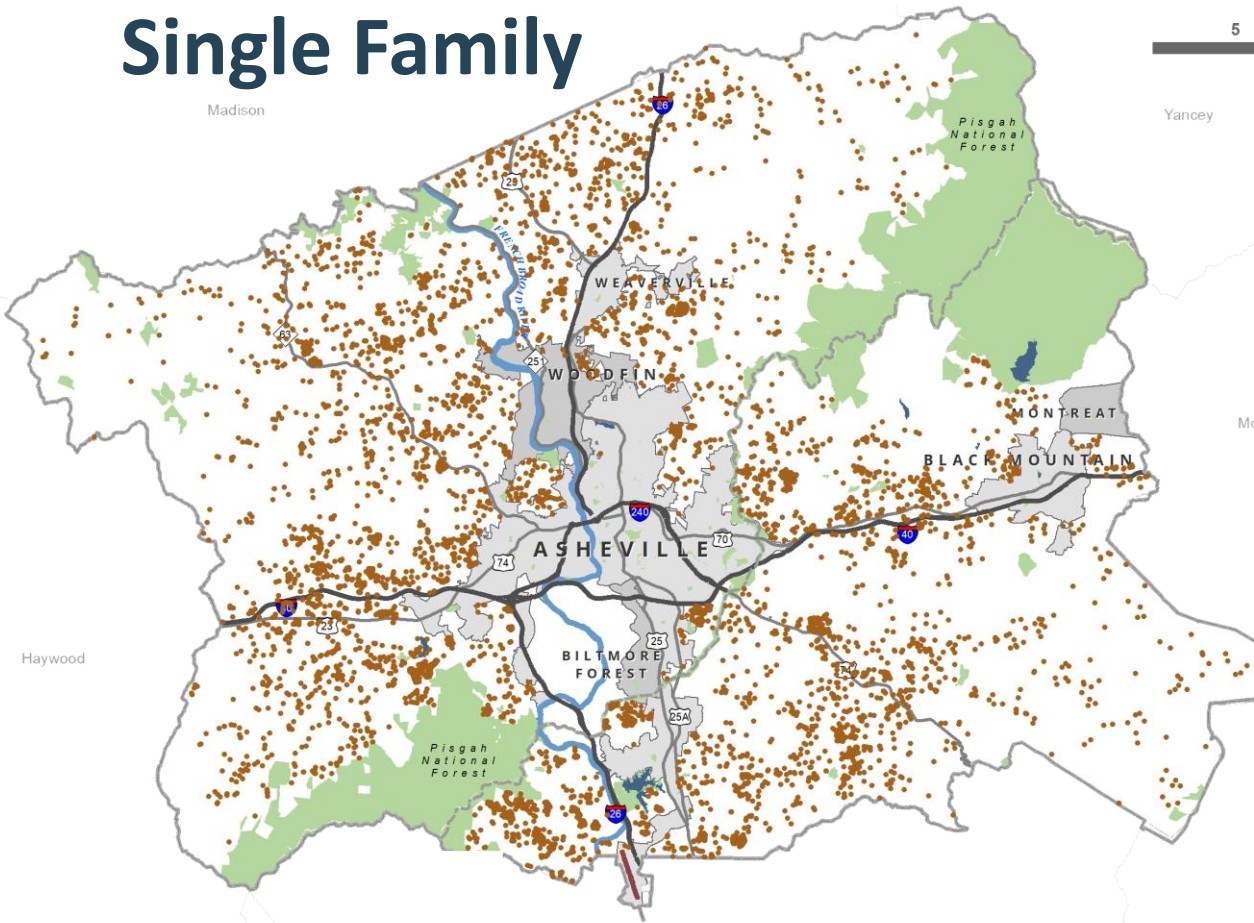
Low Projection, 2045



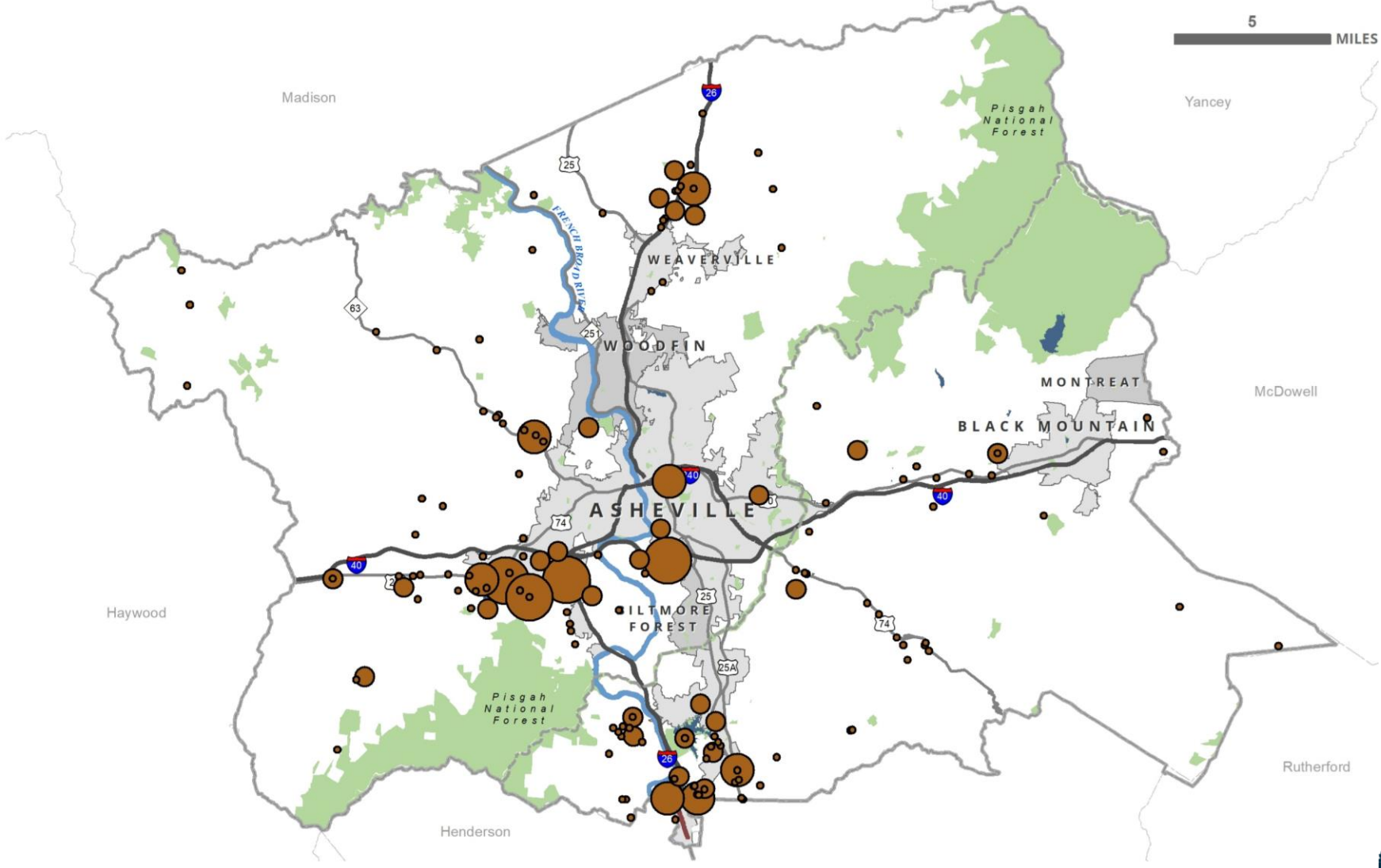
New Housing Construction (2013 -2021)

Single Family

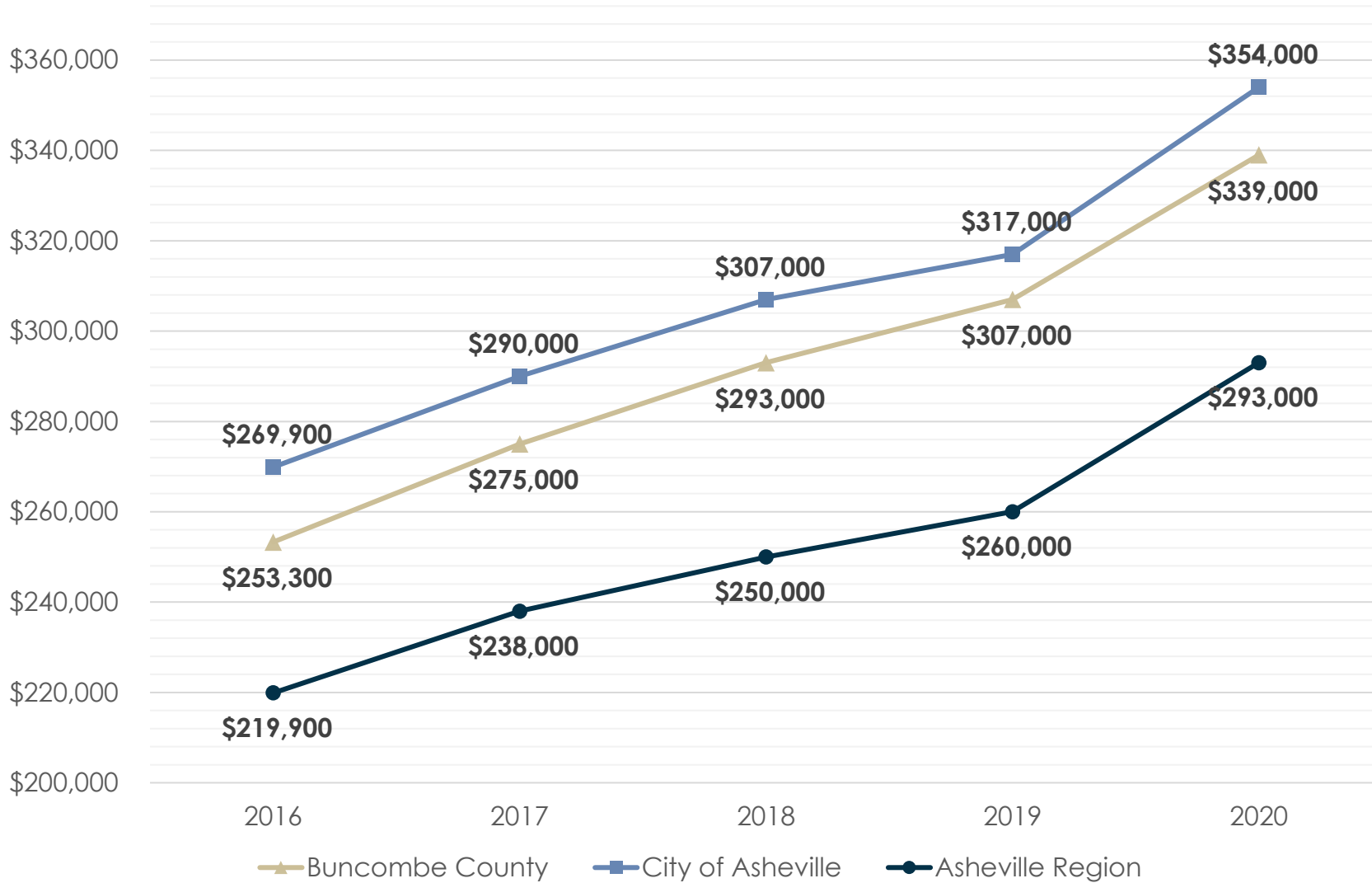
Multi-family



New Commercial Construction (2013 -2021)



Median Home Sales



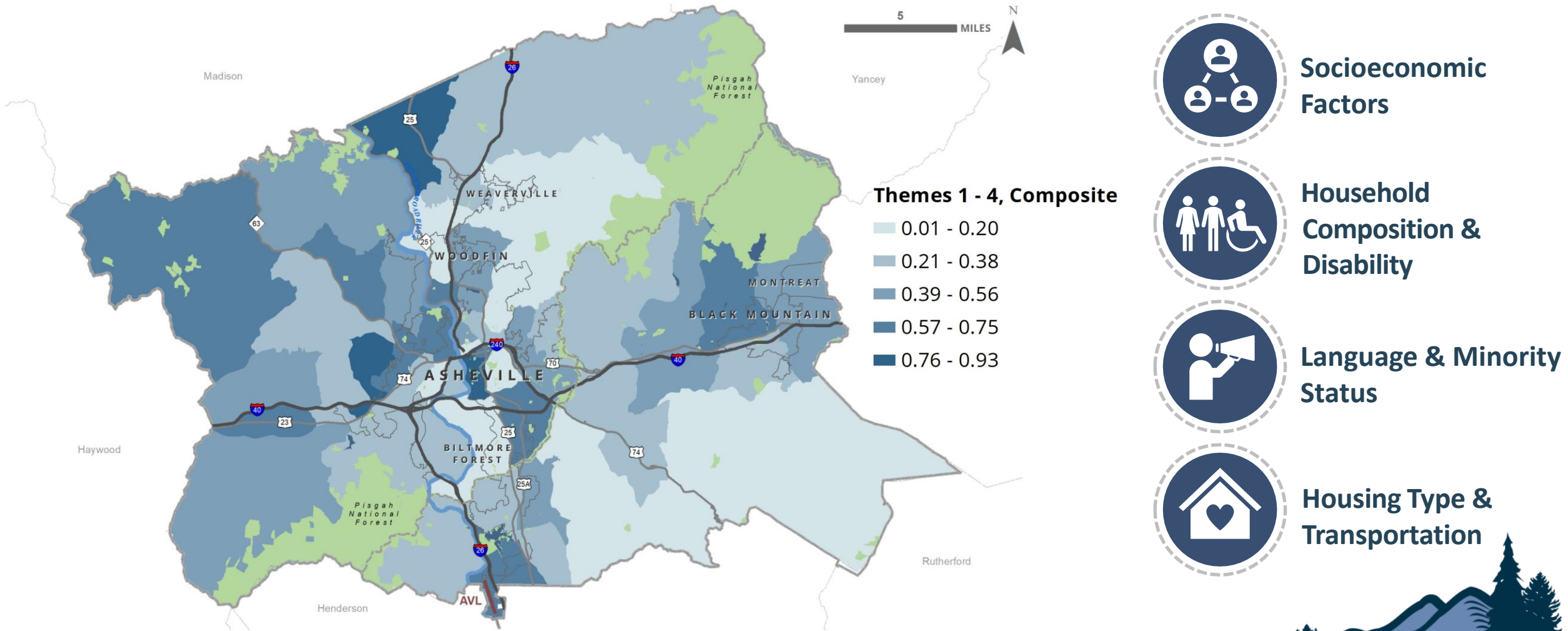
COST BURDEN



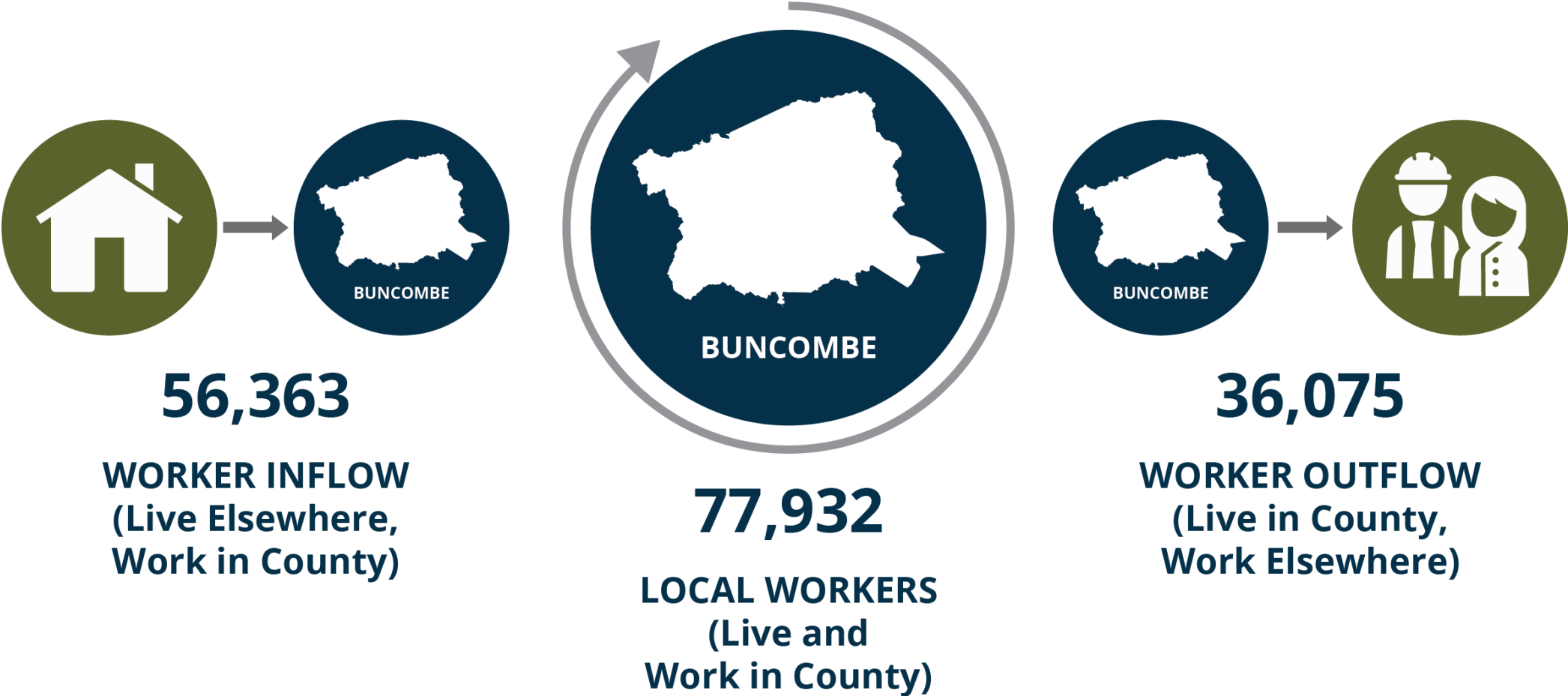
of renter households paying more than 30% of income for rent



VULNERABILITY: CDC Social Vulnerability Index



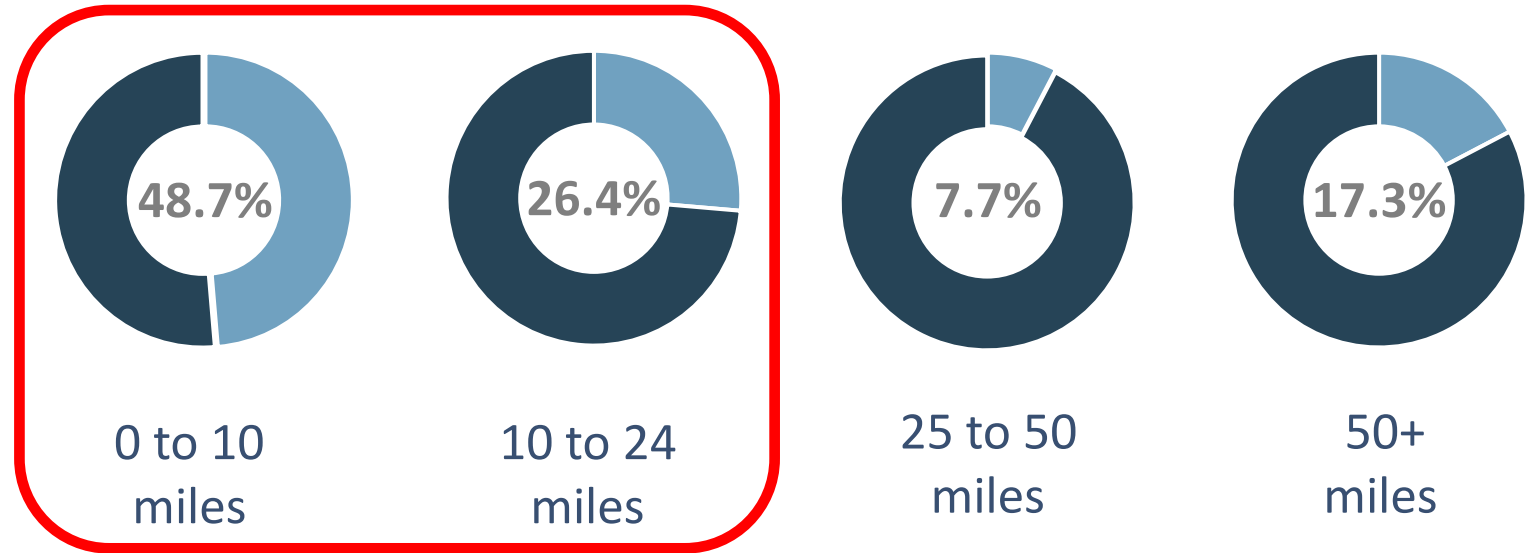
Commuting Patterns



Commuting Time

The mean travel time to work is about **20 minutes** for workers employed in Buncombe County.

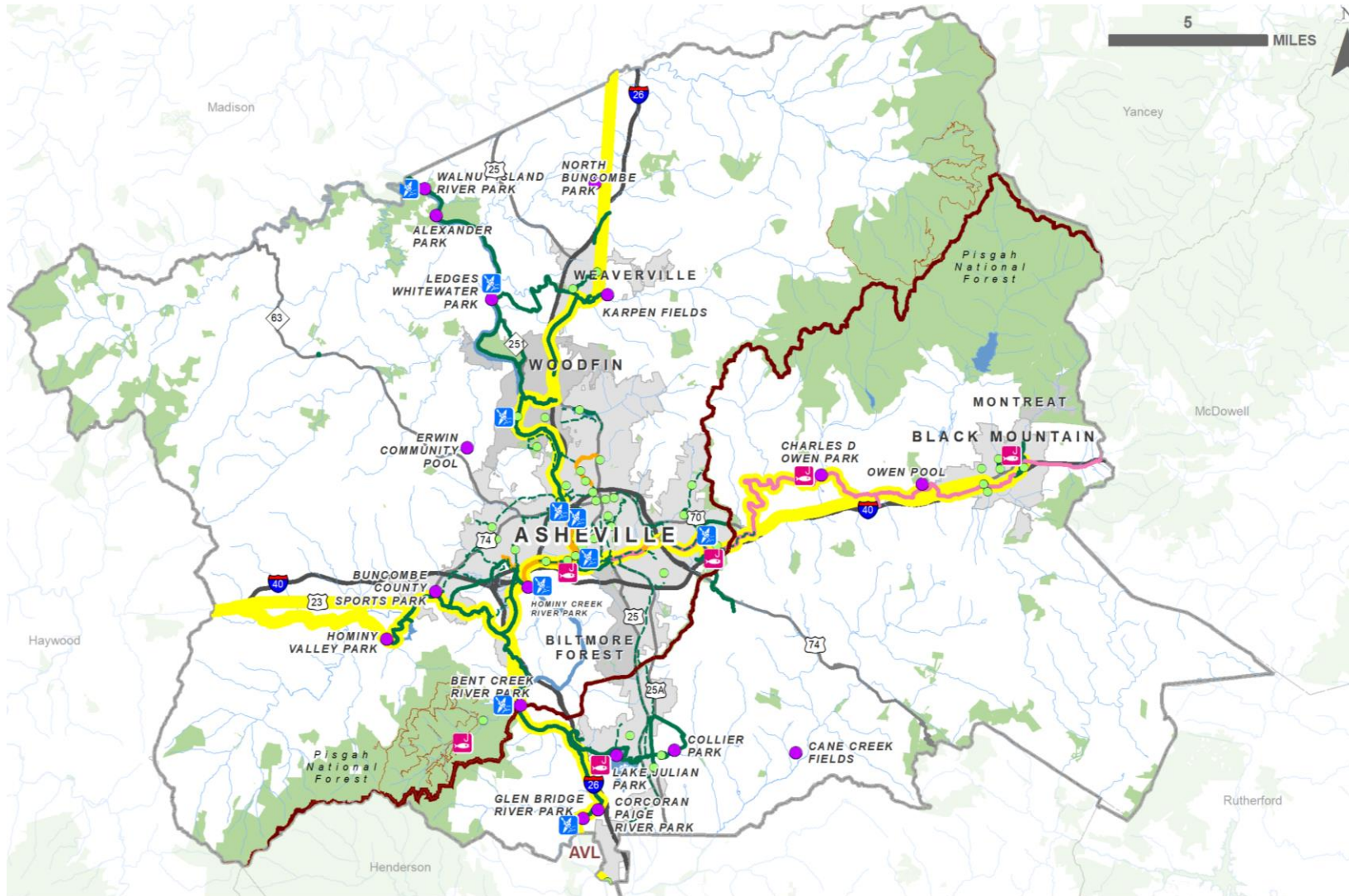
Commuting Distance



75%
of workers



Open Space and Recreation



GREENWAYS & TRAILS



PROTECTED OPEN SPACE



PARKS

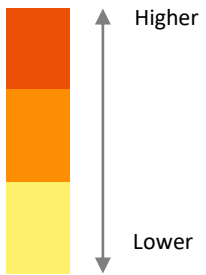


BLUEWAYS



Working Lands

Farmland Preservation Priorities



SUPPORTING FARMERS



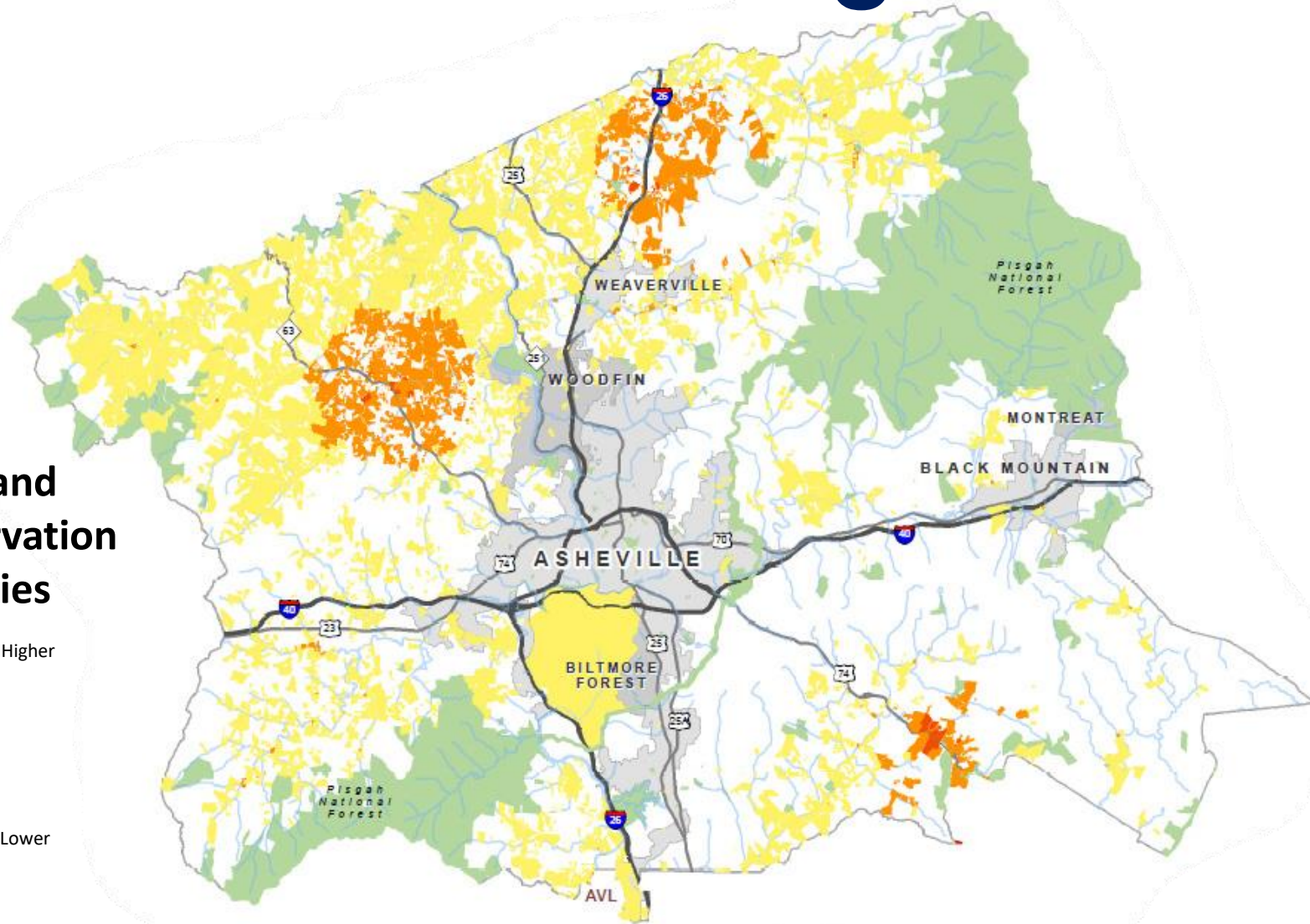
STEWARDSHIP



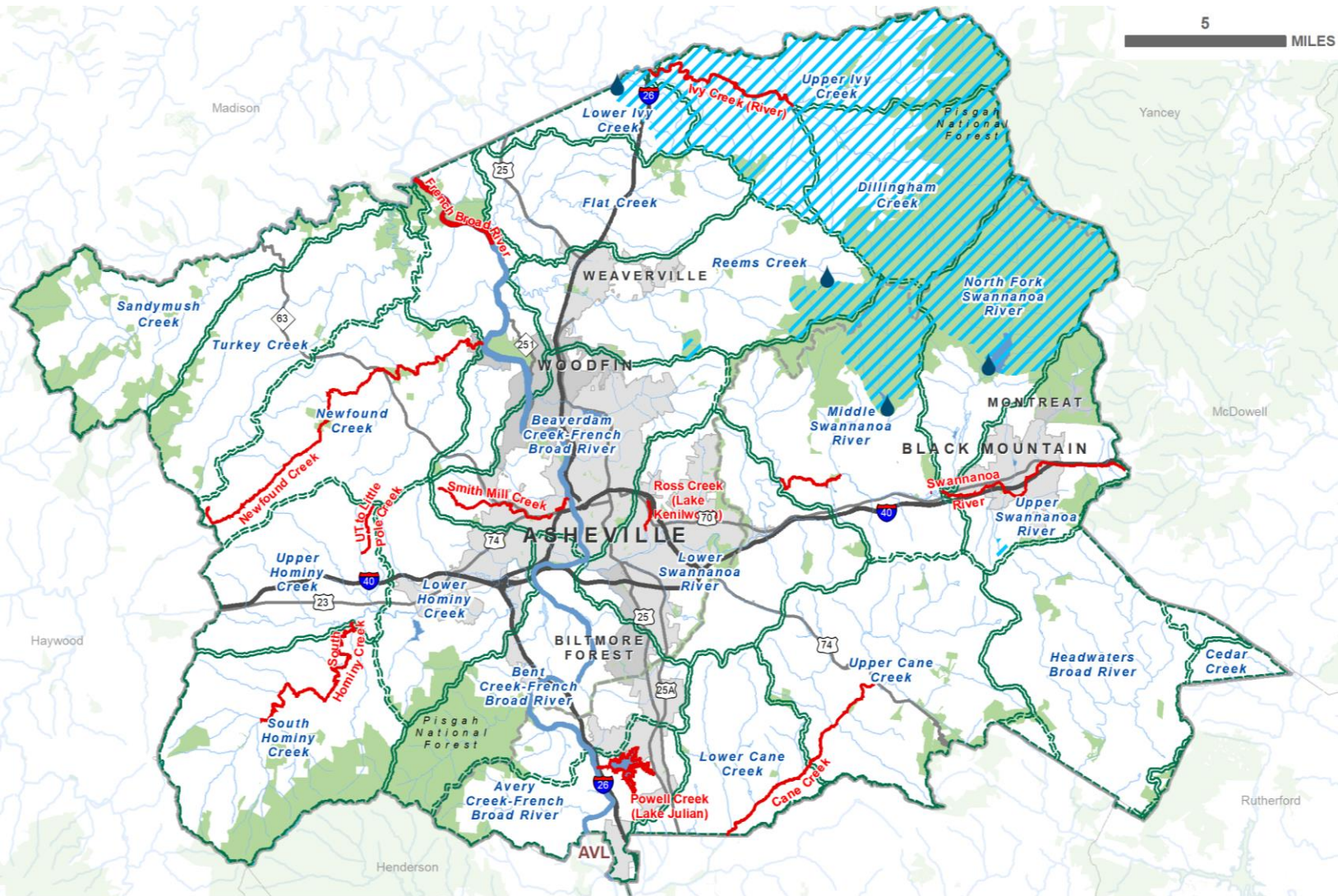
GROWTH & DECLINE










AGRICULTURAL PRESERVATION



Water Resources

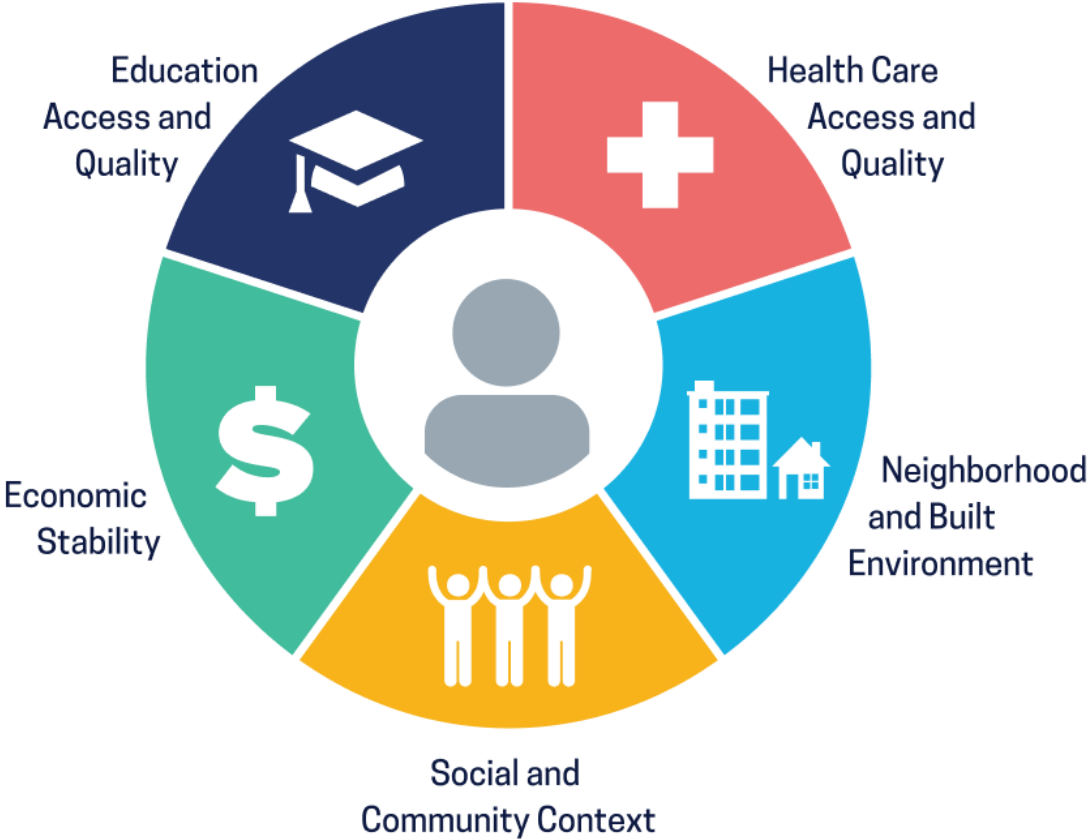


Water Resources
Drinking water supply

-  HUC 12 Watersheds (with labels)
-  Drinking Water Supply Watersheds
-  Lakes and Reservoirs
-  Impaired Waterways
-  French Broad River
-  Major Streams
-  Public Water Supply Water Sources



Community Health



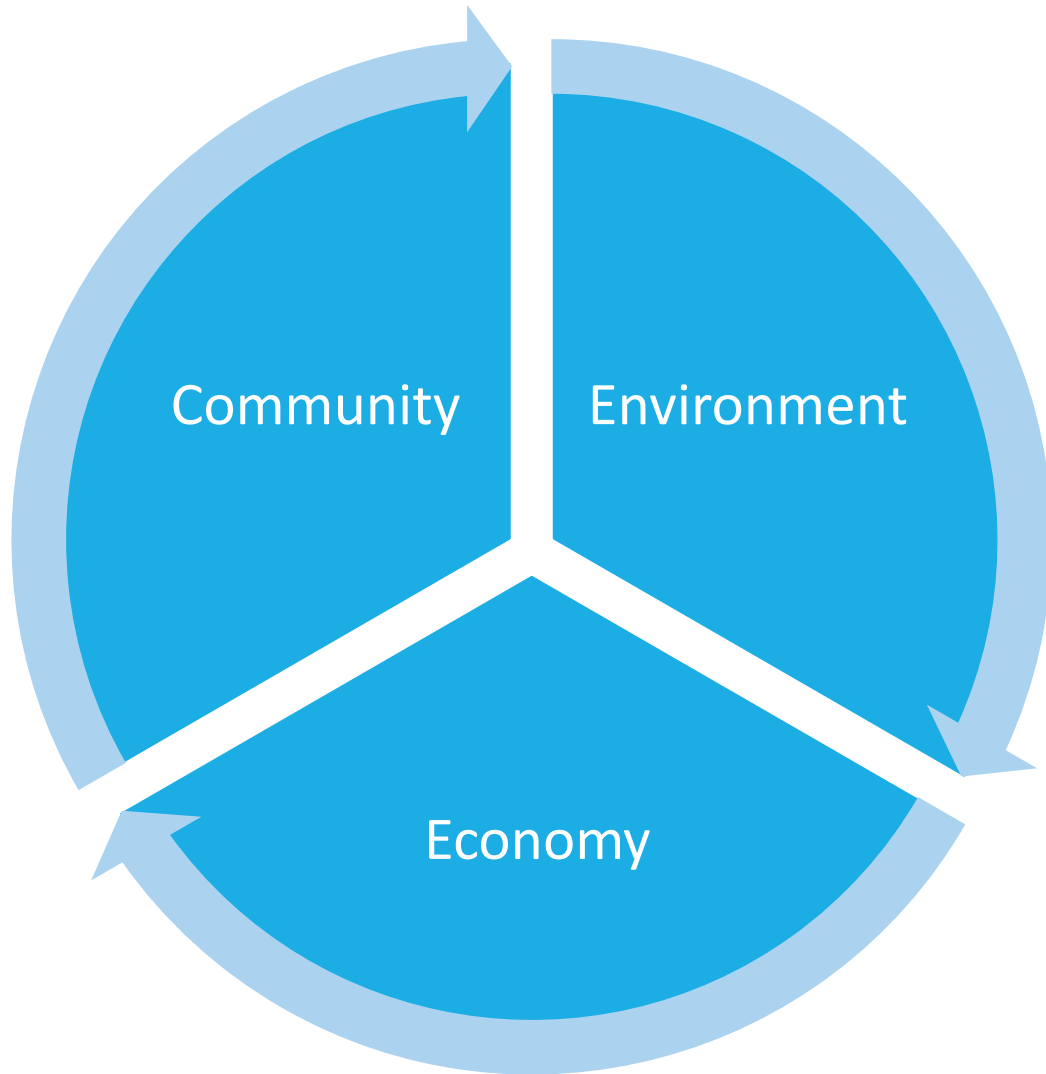
Buncombe Priority #1:
Mental Health



Buncombe Priority #2:
Maternal/Birth Outcomes & Infant Mortality



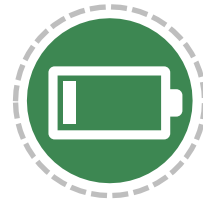
Sustainability



Planning for Holistic Sustainability



Buncombe County Renewable Energy Plan: reach **100%** renewable energy for the community by 2042



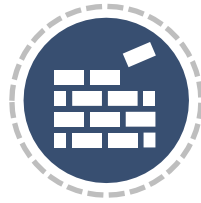
If no action is taken, only **8.1%** of the community's electrical supply will come from renewable energies by 2042



Hazard Mitigation and Resilience



Resilience



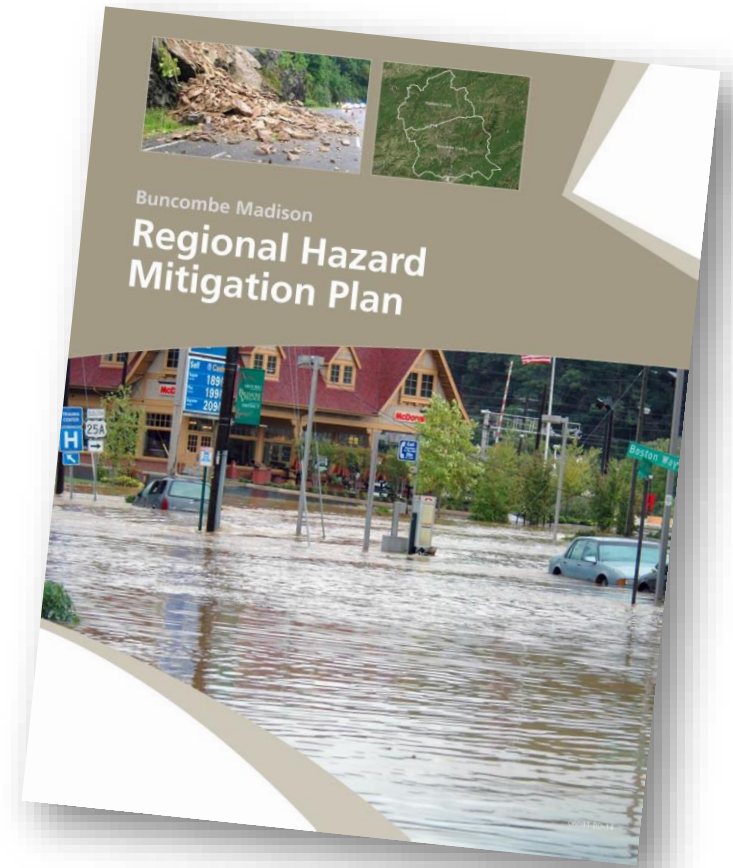
Hazard Mitigation



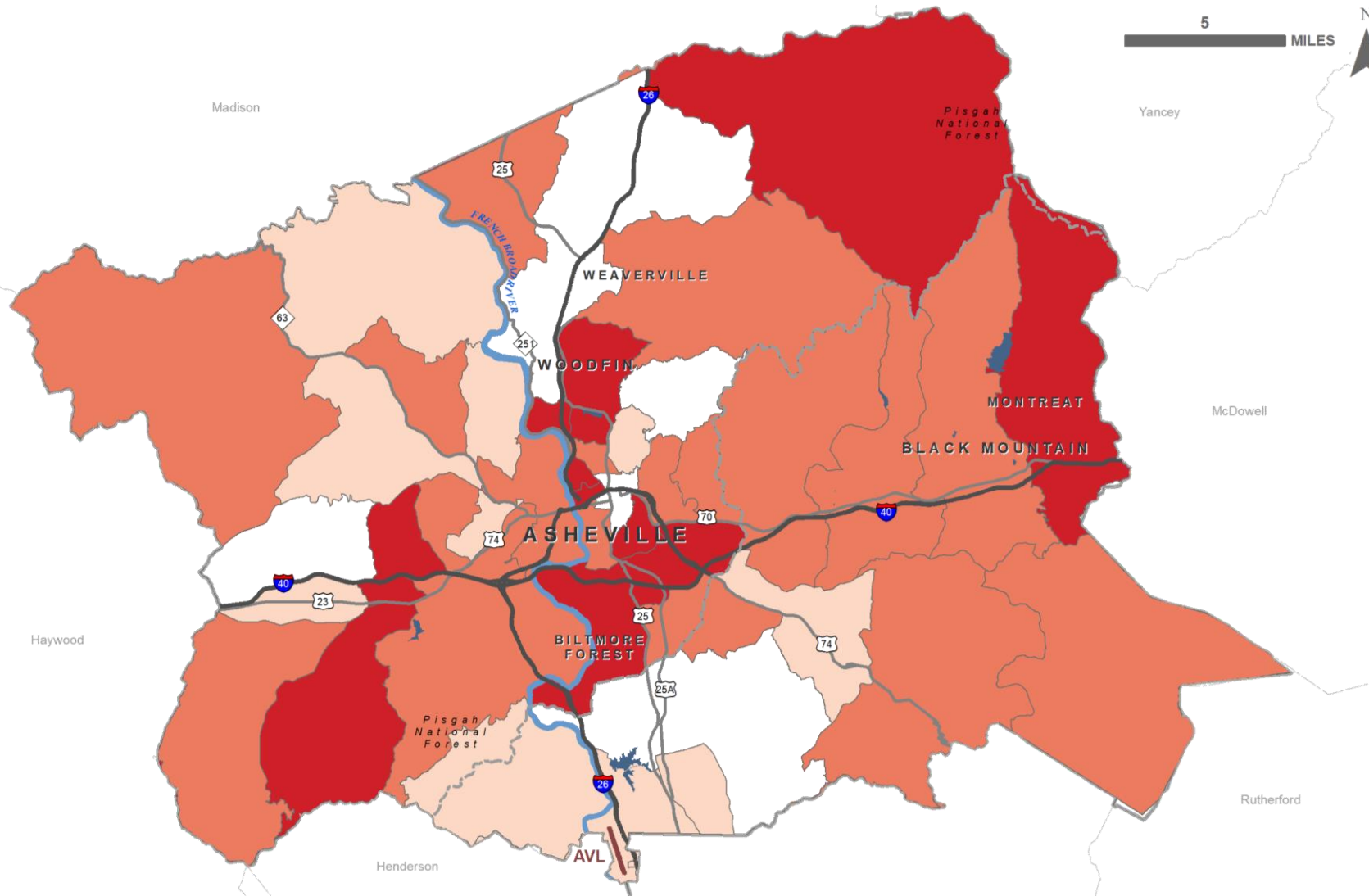
Hazards



Integration into
Comprehensive Plan



Hazard Vulnerability Example



FLOOD RISK:
13% of commercial properties have high flooding risks

Commercial Property and Flooding
Percent medium-high vulnerability and risk

- 0.37 - 5.6
- 5.7 - 24
- 25 - 65



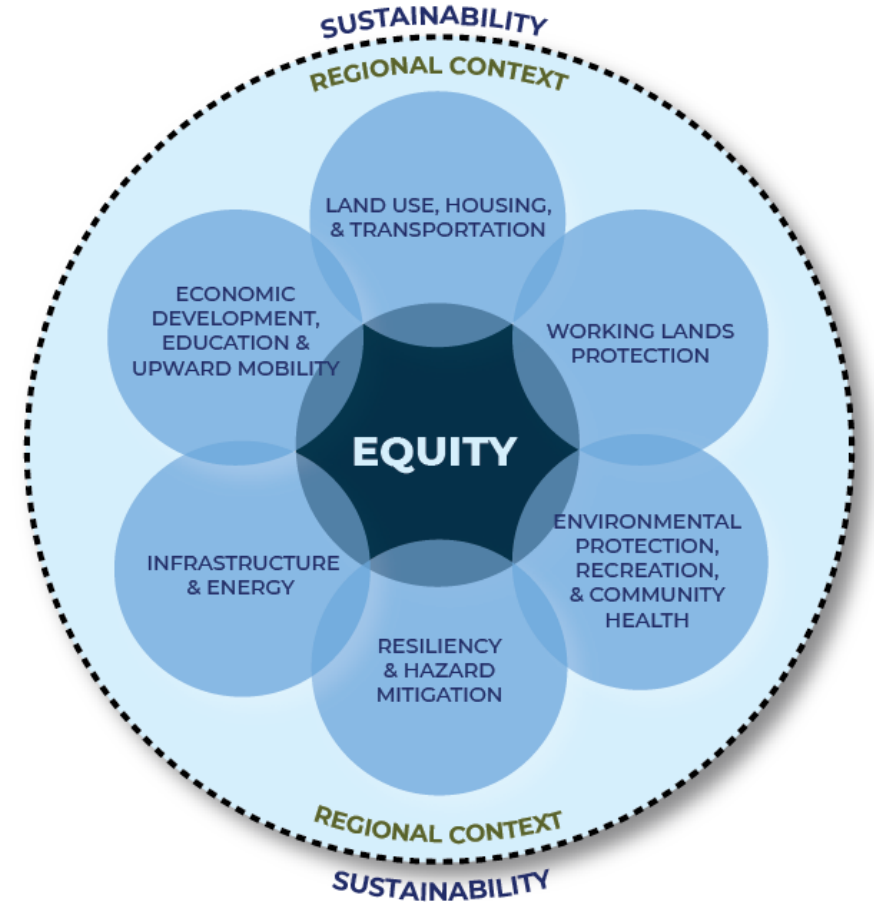
Phase 2 Input Opportunity- Vision and Goals

What trends and influences could affect
Buncombe's future?



Phase 2 Input Activities

- Poll
- Priorities and Actions
- Mapping
- Stakeholder Survey



Phase 2- Input Opportunity Participation



1243
completed a
portion or all
of the
Activities

347
attended
meetings

592
kids
participated

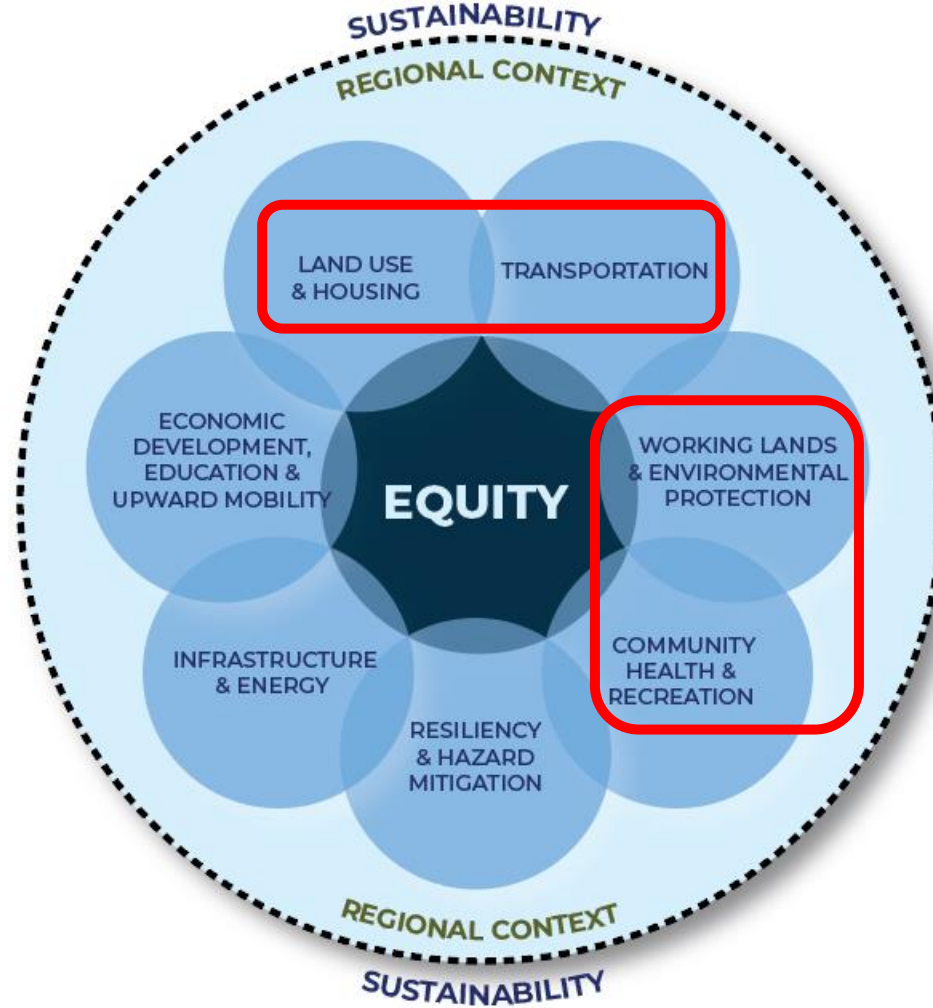
127
Stakeholder
surveys

1321
Community
Engagement
Word Cloud

20
meetings
and events



Planning Topics (Revised)

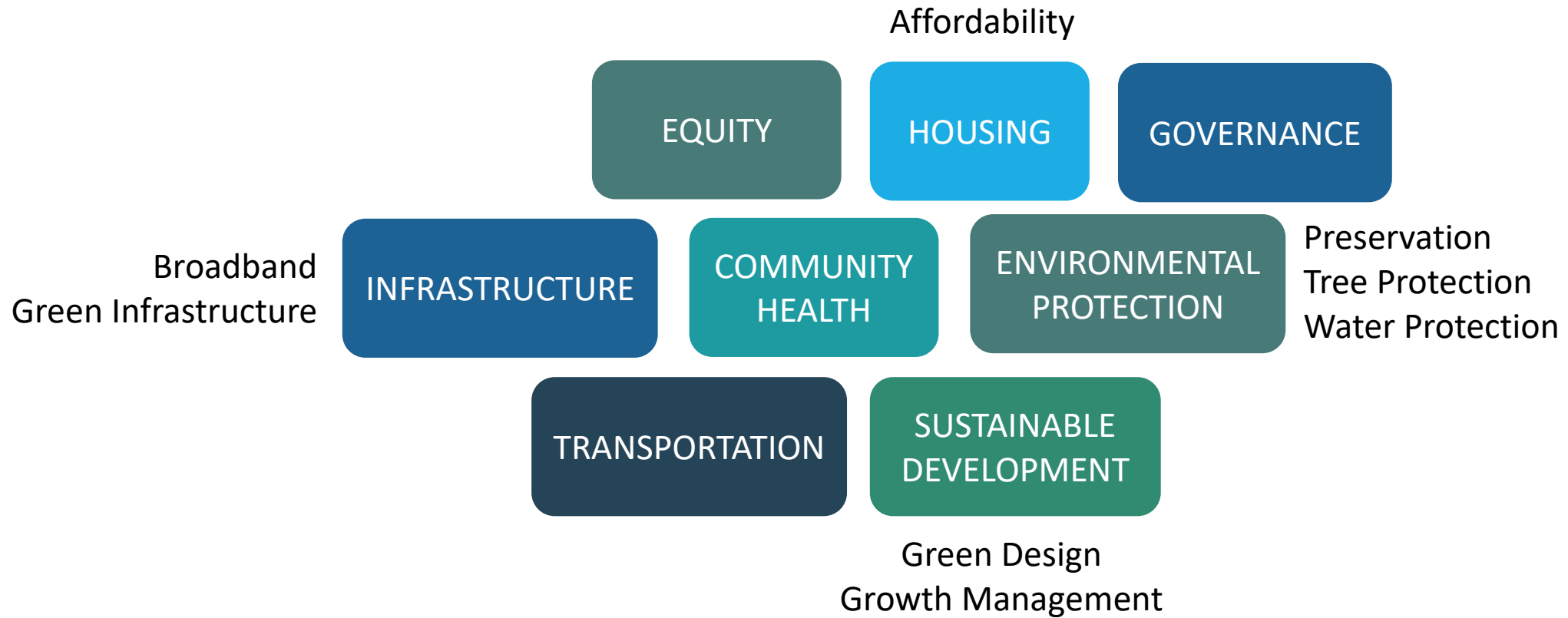


Phase 2 Preliminary Data

- What do you like most about Buncombe County?
 - Natural environment
 - People
- What are your biggest transportation needs/wants?
 - Better access to sidewalks, walking trails, greenways
- What should be the County's priorities for creating a more sustainable future for its people and businesses?
 - Support the development of housing affordable for all residents and local workers



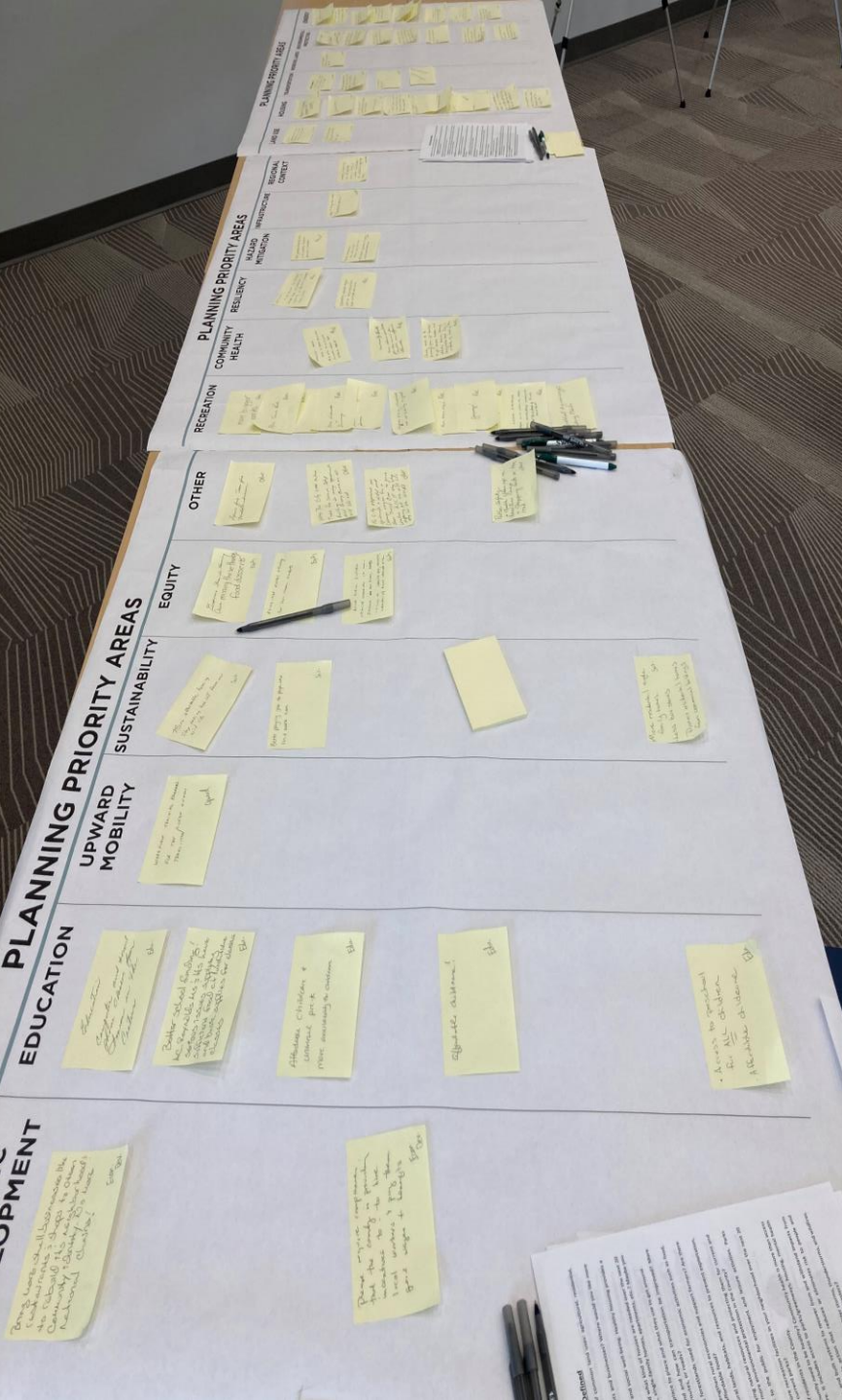
Phase 2 Preliminary Data (Themes)



✓ PHASE 3 - DEVELOP POLICIES AND STRATEGIES

- Late Spring 2022 – Fall 2022
- Input Opportunity (Develop Policy Direction and Priorities)
 - Tentatively Mid June to beginning of September 2022
- Input Opportunity – Affirm the Plan (Bring the Plan Out to the Community)





COMMENTS/QUESTIONS?

