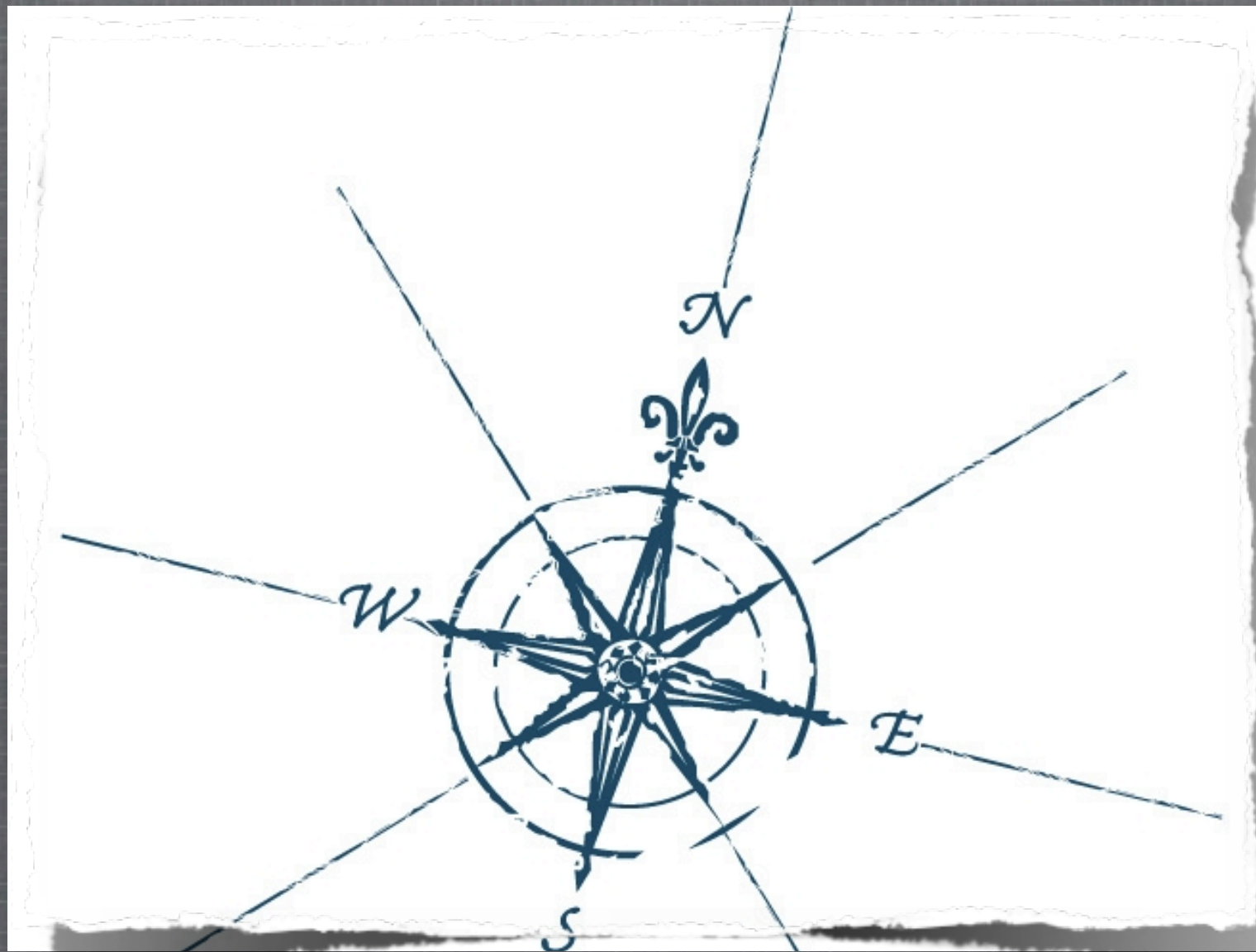
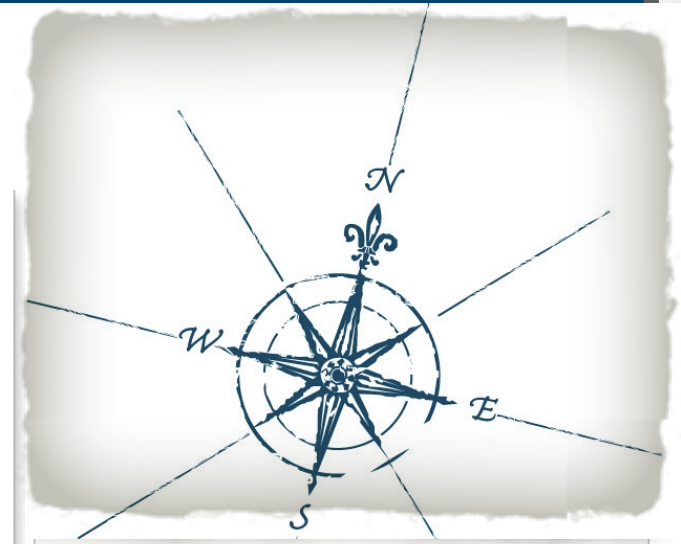
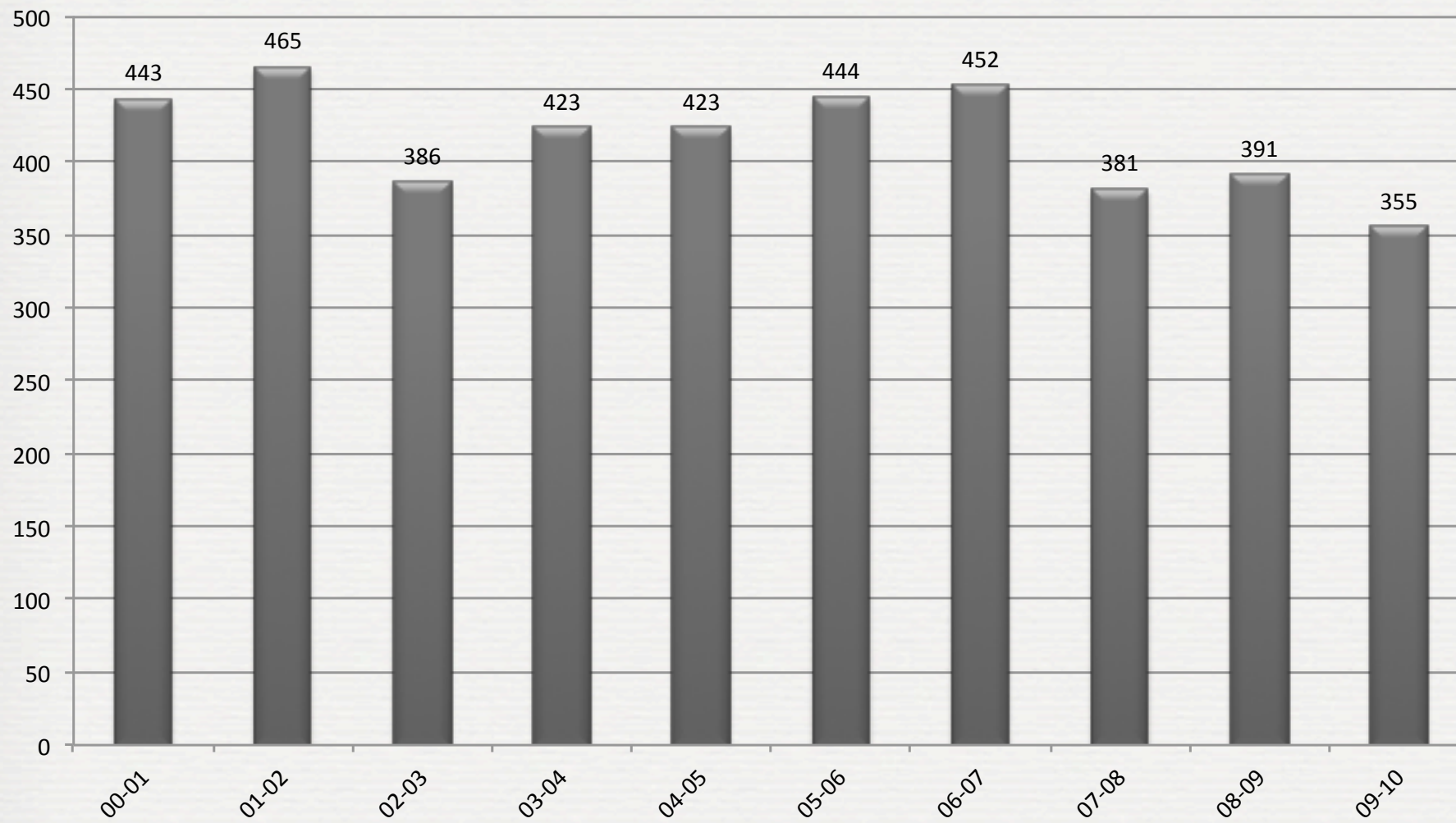


GRADUATION INITIATIVE

Moving in the Right Direction



Buncombe County Schools Dropout Comparison -- Total Number

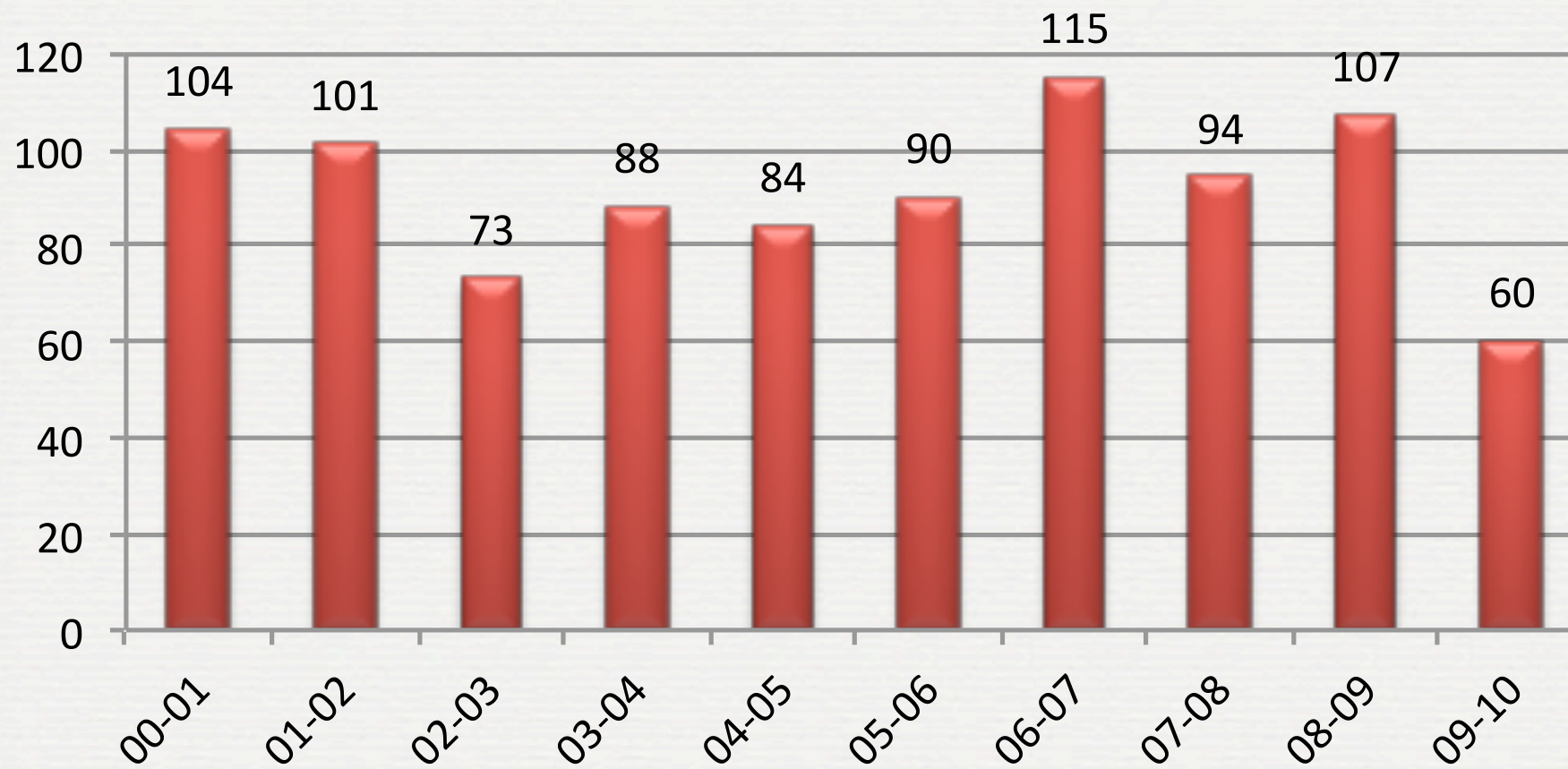


The official dropout number reported to the State in 2009-2010 represents the lowest number on record in Buncombe County Schools.

This represents a 9.2% reduction from 2008-2009 and another 6.8% reduction from 2007-2008, which was the previous record low.

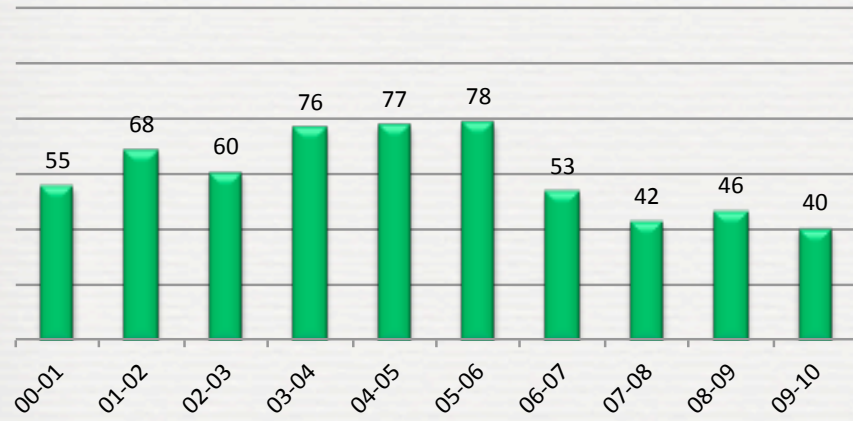
The 2009-2010 dropout number is a 24% reduction from the highest number in 2001-2002 and a 15% reduction from the 10-year average.

Erwin High School

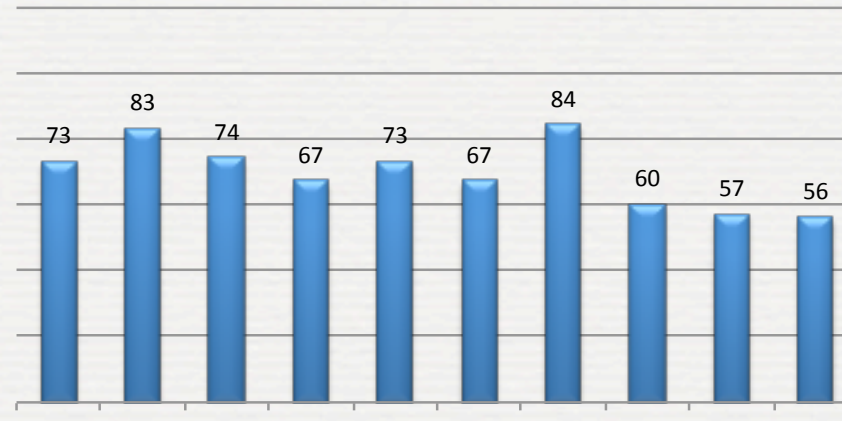


Erwin High School accounts for the largest share of the decline in dropout numbers in 2009-2010 with a 44% reduction from the previous year. This also represents a 35% decrease from their 10-year average.

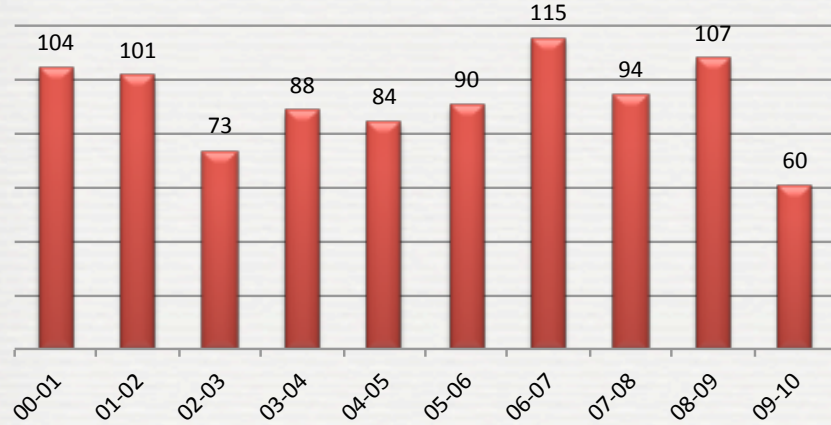
AC Reynolds



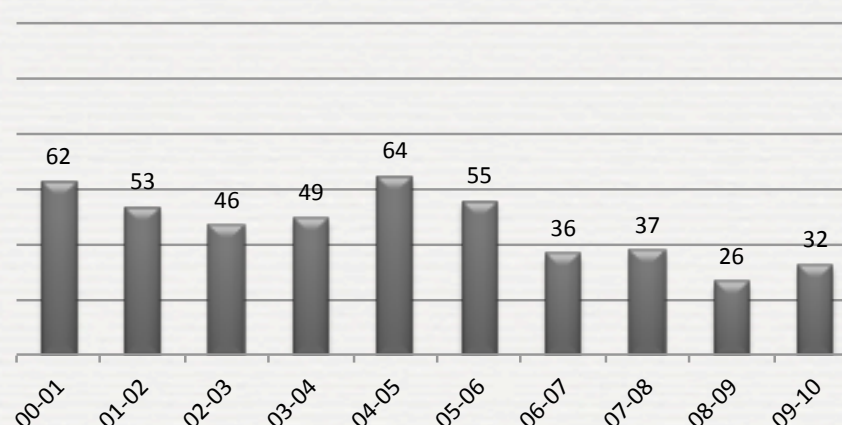
Enka High



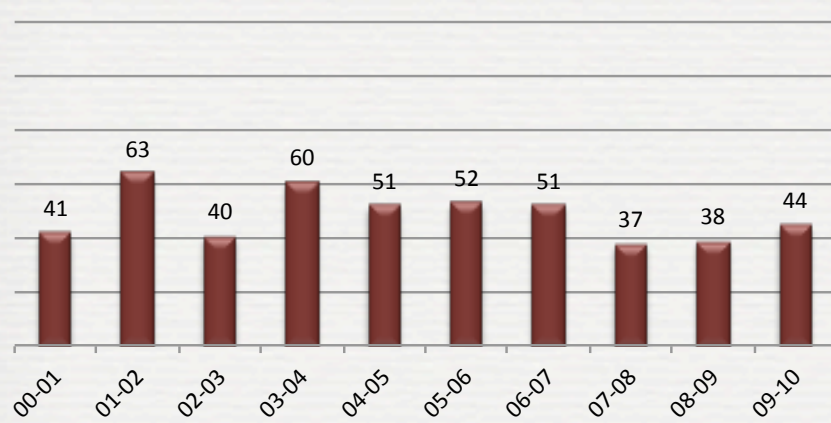
Erwin



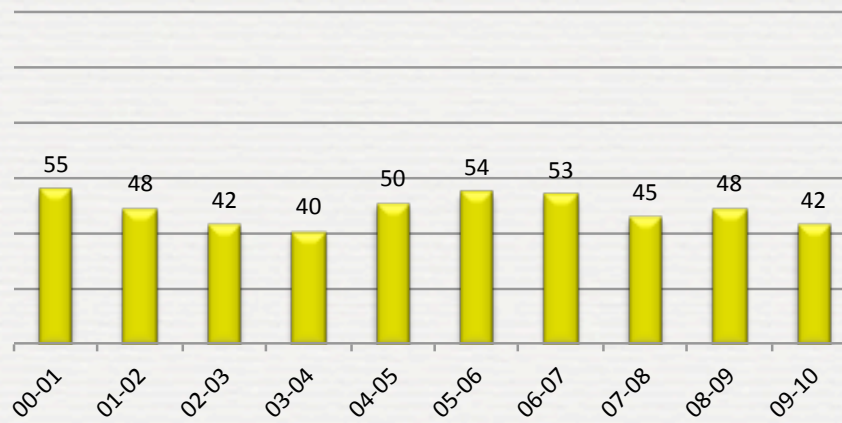
North Buncombe



Owen High



TC Roberson



In addition to the reductions at Erwin High, other high schools in the district have shown significant improvements in dropout numbers in the past three years.

- AC Reynolds and Enka High also reported their lowest number on record in 2009-2010.

- For four of the six traditional high schools, their three-year average is the lowest number of dropouts in the past 10 years.

- In 2008-2009 and in 2009-2010, North Buncombe High reported the lowest dropout numbers ever among the traditional high schools.

The Graduation Initiative has been awarded
\$607,200
in Dropout Prevention Grant funds since 2007.

These funds have been used to support:

• **Summer Bridge Programs at:**

**Enka Middle
Enka High
Early College
Erwin High**

- **Mini-Mester at AB-Tech**
- **Tutoring at Erwin Middle & Early College**
- **Attendance Outreach at Erwin Middle, Enka Middle, Erwin High, and Enka High**
- **“Why Try” Professional Development**

New initiatives include:

- **Twilight School**
- **Math Tutoring Partnership with UNCA**
- **Math and Science Careers Summer Experience**
- **“Lesson Study” Professional Development for Erwin and Enka district math teachers**

Over the course of a lifetime, each dropout costs communities and the nation **\$260,000** in lost wages, taxes, and productivity.

At the current rate, nearly **13 million students** will drop out of high school this decade, costing the United States about **\$3 trillion**.

In the past three years, **121** more students have graduated from Buncombe County Schools, resulting in potential savings of **\$31,460,000**.