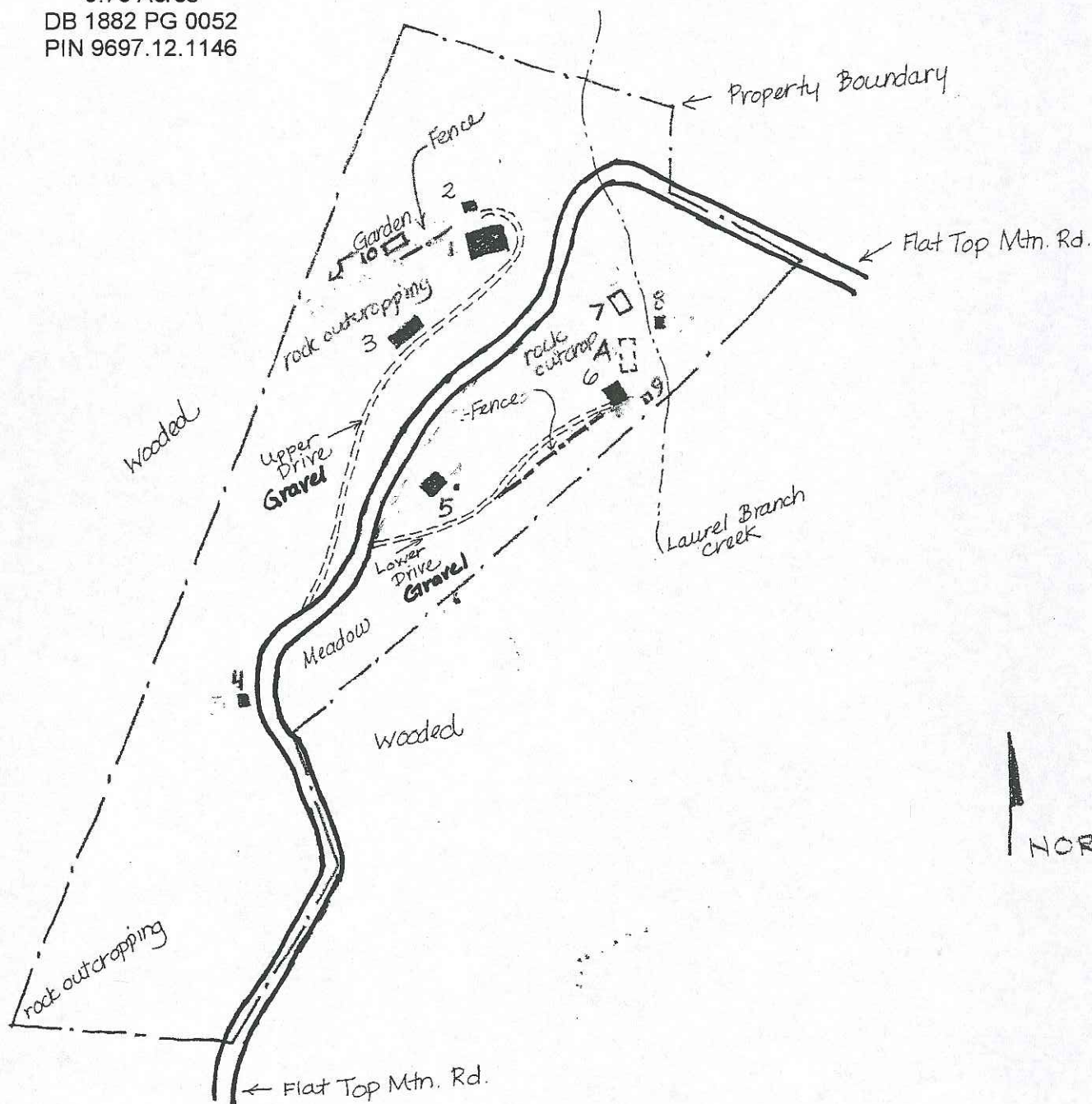


Exhibit A
 William Nelson Camp Jr. House
 92 Flat Top Mountain Road
 9.73 Acres
 DB 1882 PG 0052
 PIN 9697.12.1146



SKETCH MAP
 SCALE 1" = 200'

WILLIAM NELSON CAMP, JR. HOUSE

- CONTRIBUTING
- NON-CONTRIBUTING
- ▭ FOUNDATIONS

--- boundary

- 1 William Nelson Camp, Jr. House
- 2 Water storage bldg.
- 3 Garage
- 4 Spring House
- 5 Cottage
- 6 Barn

- 7 New Log Cabin
- 8 Spring House

- 9 storage shed
- 10 gazebo

A former electric generating facility/battery storage fndtn.