

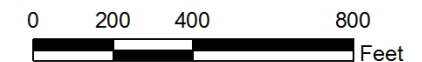
Carol Holcombe

- Request CS from R-LD
- Staff Recommendation:
 - Approval
- Planning Board Recommendation:
 - Approval



Carol Holcombe Map Amendment

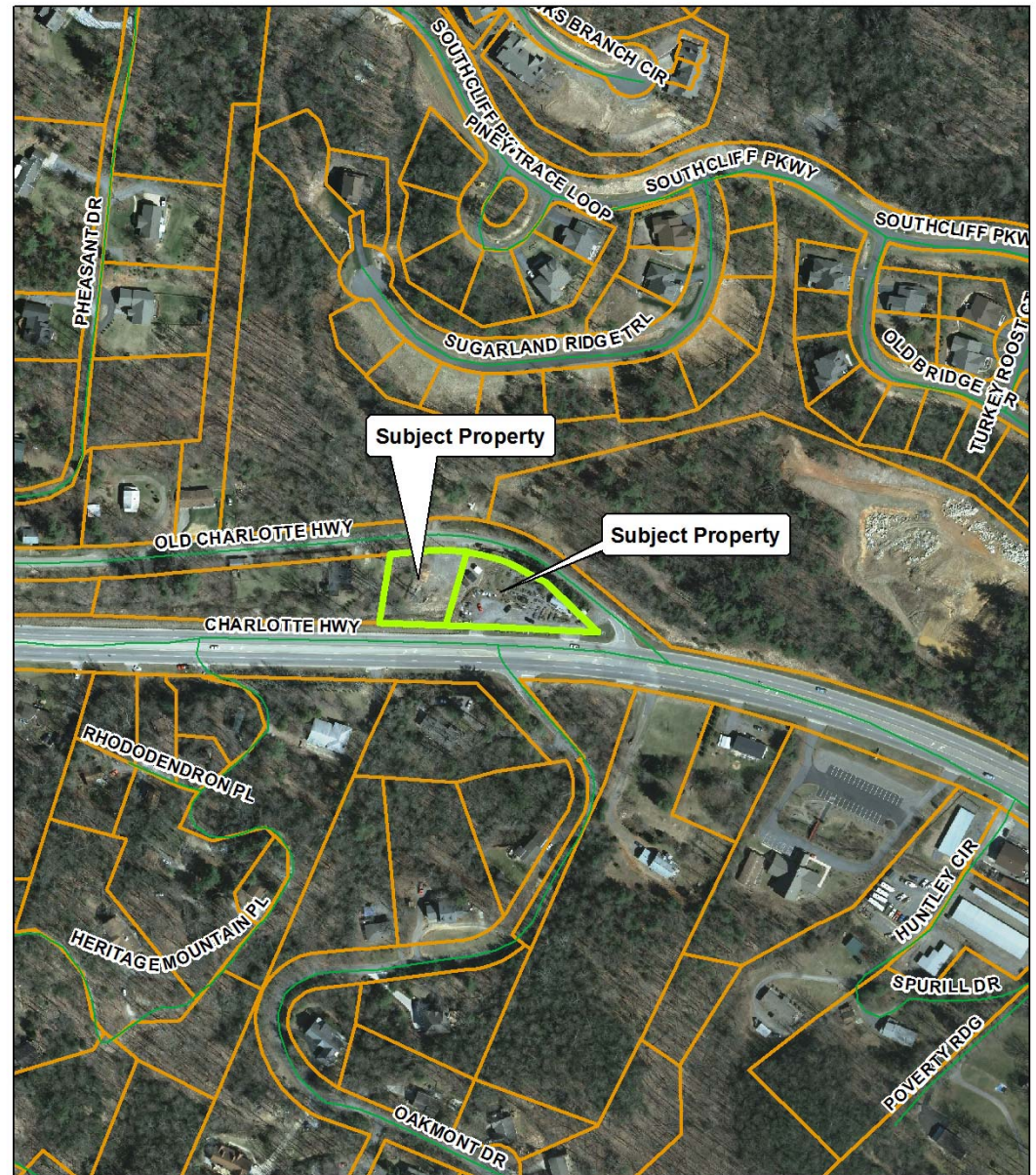
Case Number: ZPH2012-00005
Total Property Size: 1.04 acres
Application Date: March 12, 2012
Planning Board Hearing Date: April 16, 2012



Created By: Buncombe County Planning
Date: March 30, 2012

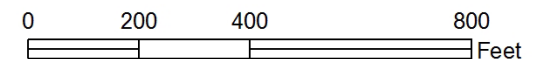
Carol Holcombe

- Request CS from R-LD
- Staff Recommendation:
 - Approval
- Planning Board Recommendation:
 - Approval



Carol Holcombe Map Amendment

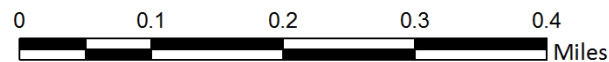
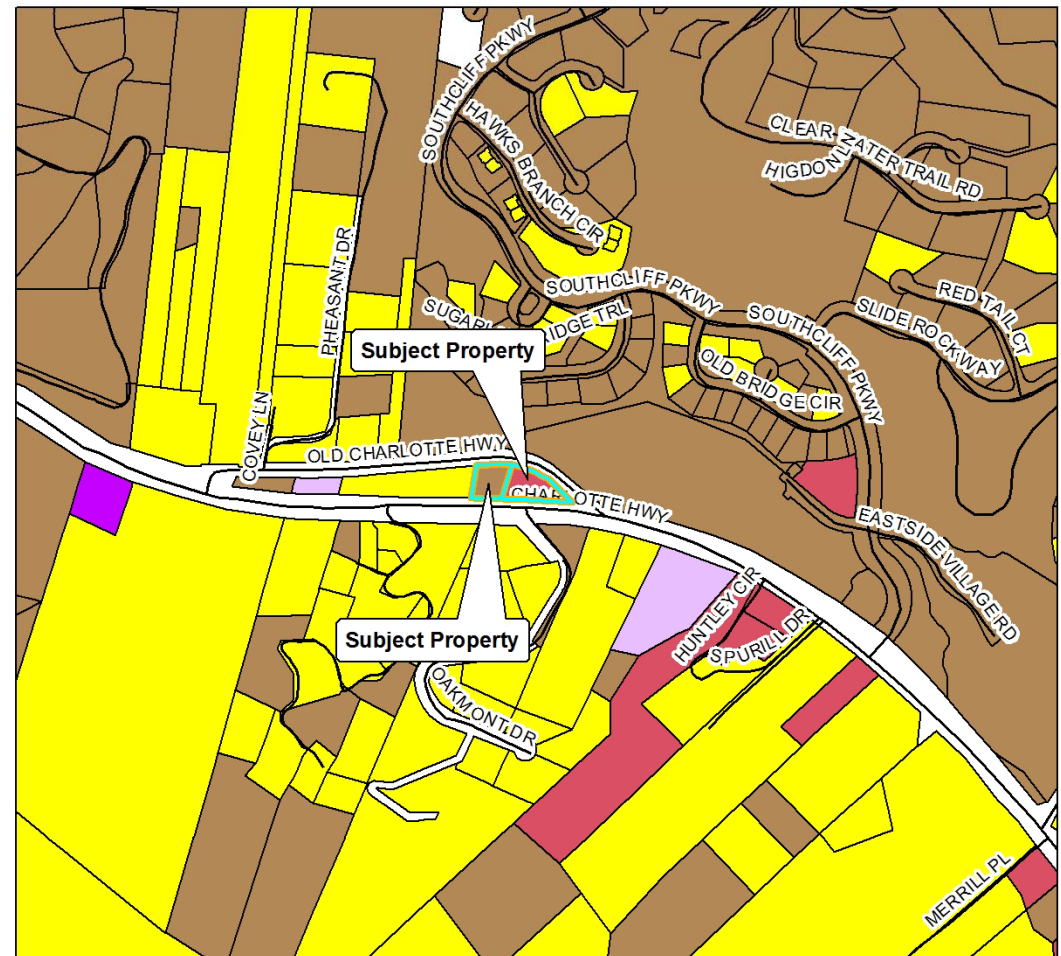
Case Number: ZPH2012-00005
Total Property Size: 1.04 acres
Application Date: March 12, 2012
Planning Board Hearing Date: April 16, 2012



Created By: Buncombe County Planning
Date: March 30, 2012

Carol Holcombe

- Request CS from R-LD
- Staff Recommendation:
 - Approval
- Planning Board Recommendation:
 - Approval



Carol Holcombe Map Amendment



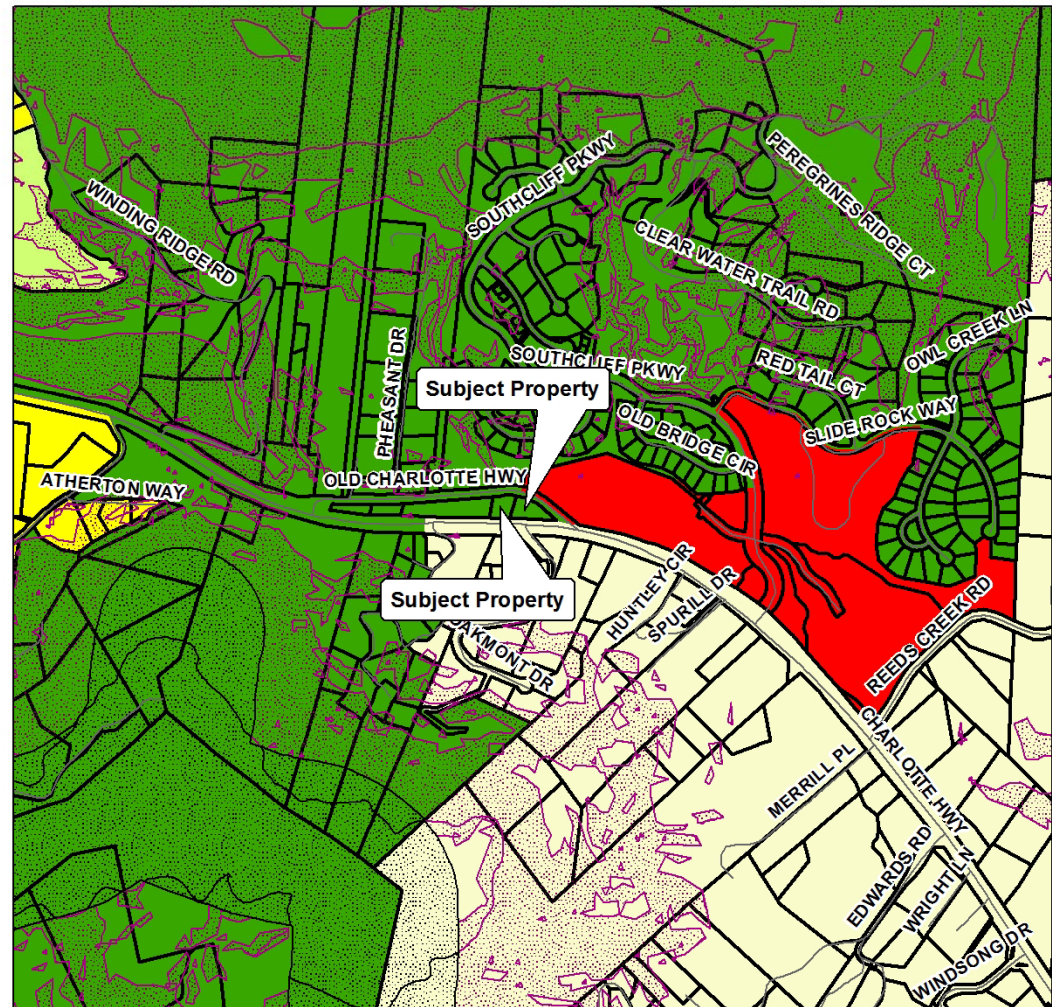
Case Number: ZPH2012-00005
Total Property Size: 1.04 acres
Application Date: March 12, 2012
Planning Board Hearing Date: April 16, 2012

Created By: Buncombe County Planning
Date: March 30, 2012

Assessed Use	
	Forestry, Conservation, Parks
	Agricultural
	Public Services
	Community Services
	Recreational, Entertainment
	Industry
	Commercial
	Vacant Land
	Residential

Carol Holcombe

- Request CS from R-LD
- Staff Recommendation:
 - Approval
- Planning Board Recommendation:
 - Approval

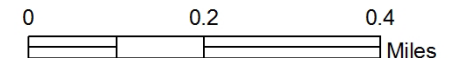


**Carol Holcombe
Map Amendment**



Zoning Districts		Zoning Overlays	
BDM	R-1	Blue Ridge Parkway Overlay	Protected Ridge & Parkway
CS	R-2	Protected Ridge Overlay	Steep Slope/High Elev.
EMP	R-3	Steep Slope/High Elev. & Pkwy	
NS	R-LD		
OU			

Case Number: ZPH2012-00005
 Total Property Size: 1.04 acres
 Application Date: March 12, 2012
 Planning Board Hearing Date: April 16, 2012



Created By: Buncombe County Planning
 Date: March 30, 2012