

# Phillip Warren

- Request PS from R-1
- Staff Recommendation:
  - Denial
- Planning Board Recommendation:
  - Approval



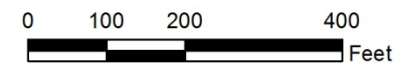
## Phillip Warren Map Amendment

Case Number: ZPH2012-00008

Property Size: 0.3 acres

Application Date: April 25, 2012

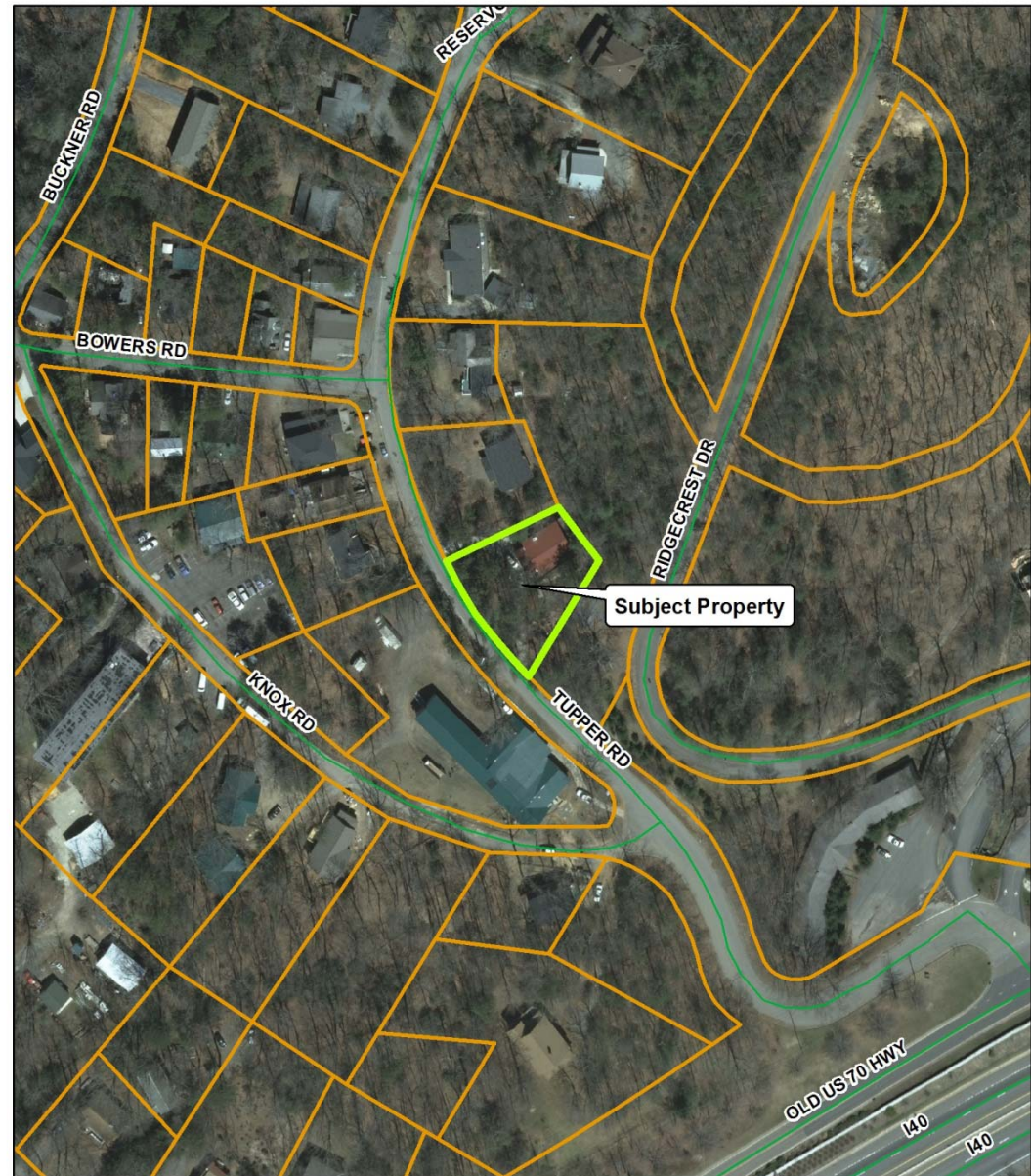
Planning Board Hearing Date: June 4, 2012



Created By: Buncombe County Planning  
Date: April 30, 2012

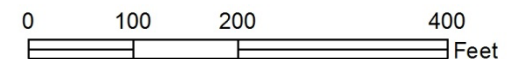
# Phillip Warren

- Request PS from R-1
- Staff Recommendation:
  - Denial
- Planning Board Recommendation:
  - Approval



## Phillip Warren Map Amendment

Case Number: ZPH2012-00008  
Property Size: 0.3 acres  
Application Date: April 25, 2012  
Planning Board Hearing Date: June 4, 2012

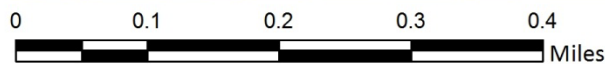
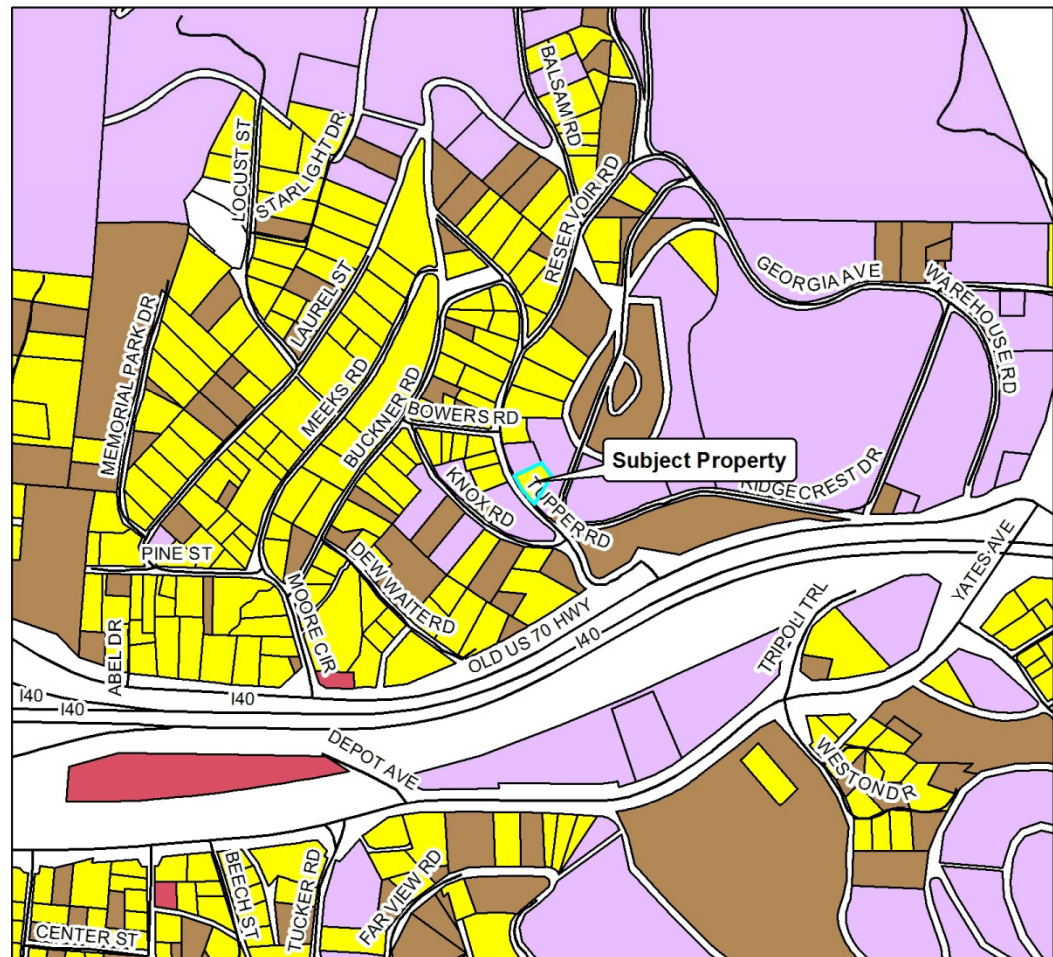


Created By: Buncombe County Planning  
Date: April 30, 2012



# Phillip Warren

- Request PS from R-1
- Staff Recommendation:
  - Denial
- Planning Board Recommendation:
  - Approval



## Phillip Warren Map Amendment



Case Number: ZPH2012-00008  
Property Size: 0.3 acres  
Application Date: April 25, 2012  
Planning Board Hearing Date: June 4, 2012

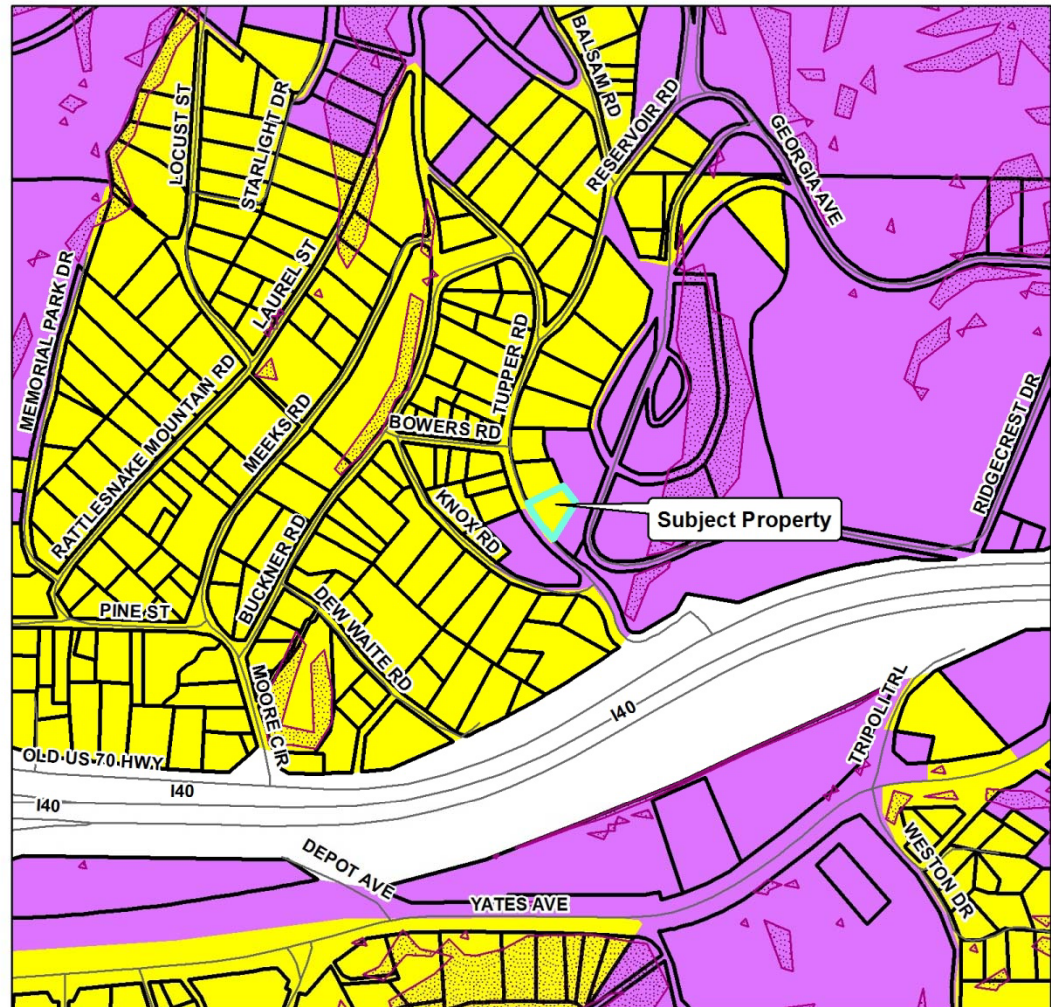
Created By: Buncombe County Planning  
Date: April 30, 2012

### Assessed Use

- Foresty, Conservation, Parks
- Agricultural
- Public Services
- Community Services
- Recreational, Entertainment
- Industry
- Commercial
- Vacant Land
- Residential

# Phillip Warren

- Request PS from R-1
- Staff Recommendation:
  - Denial
- Planning Board Recommendation:
  - Approval

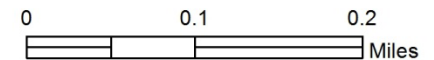


**Phillip Warren  
Map Amendment**



Zoning Districts		Zoning Overlays			
	BDM		R-1		Blue Ridge Parkway Overlay
	CS		R-2		Protected Ridge Overlay
	EMP		R-3		Protected Ridge & Parkway
	NS		R-LD		Steep Slope/High Elev.
	OU				Steep Slope/High Elev. & Pkwy

Case Number: ZPH2012-00008  
 Property Size: 0.3 acres  
 Application Date: April 25, 2012  
 Planning Board Hearing Date: June 4, 2012



Created By: Buncombe County Planning  
 Date: April 30, 2012