



# CONSERVATION EASEMENT FUNDING REQUEST

# Jeffers Farm

- 57 acres, Leicester
- Recommended by the Agricultural Advisory Board
- Requesting \$18,000 in transaction costs
- Estimated easement value \$440,000
- Landowners willing to donate 25% of value
- 80% important agricultural soils
- Land to continue to be farmed
- Newfound Creek flows along the property and will be protected by a 70 foot riparian buffer
- Adjacent to Sycamore Valley Farm which is already protected with a conservation easement

# Jeffers Farm

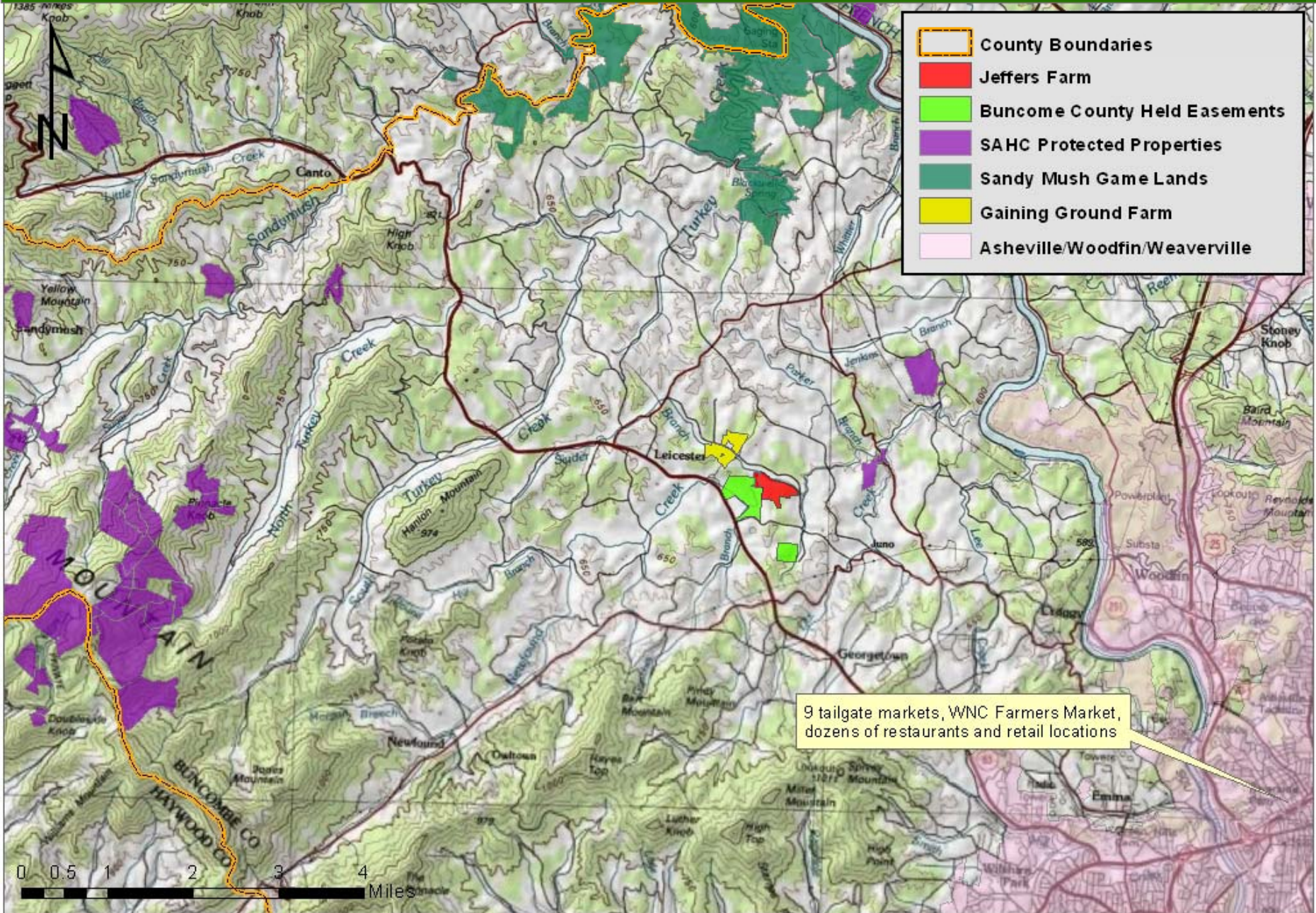
- Estimated easement value \$440,000
- Requesting \$18,000 in transaction costs
- Leveraged funds:
  - Landowner donation \$110,660 (25% of value) and \$20,000 stewardship fund
  - NC Department of Agriculture \$55,330
  - US Department of Agriculture \$221,320
  - CTNC \$9,500
  - Private donation \$55,330







# Jeffers Farm Contextual Map





# Agricultural District Neighborhood

