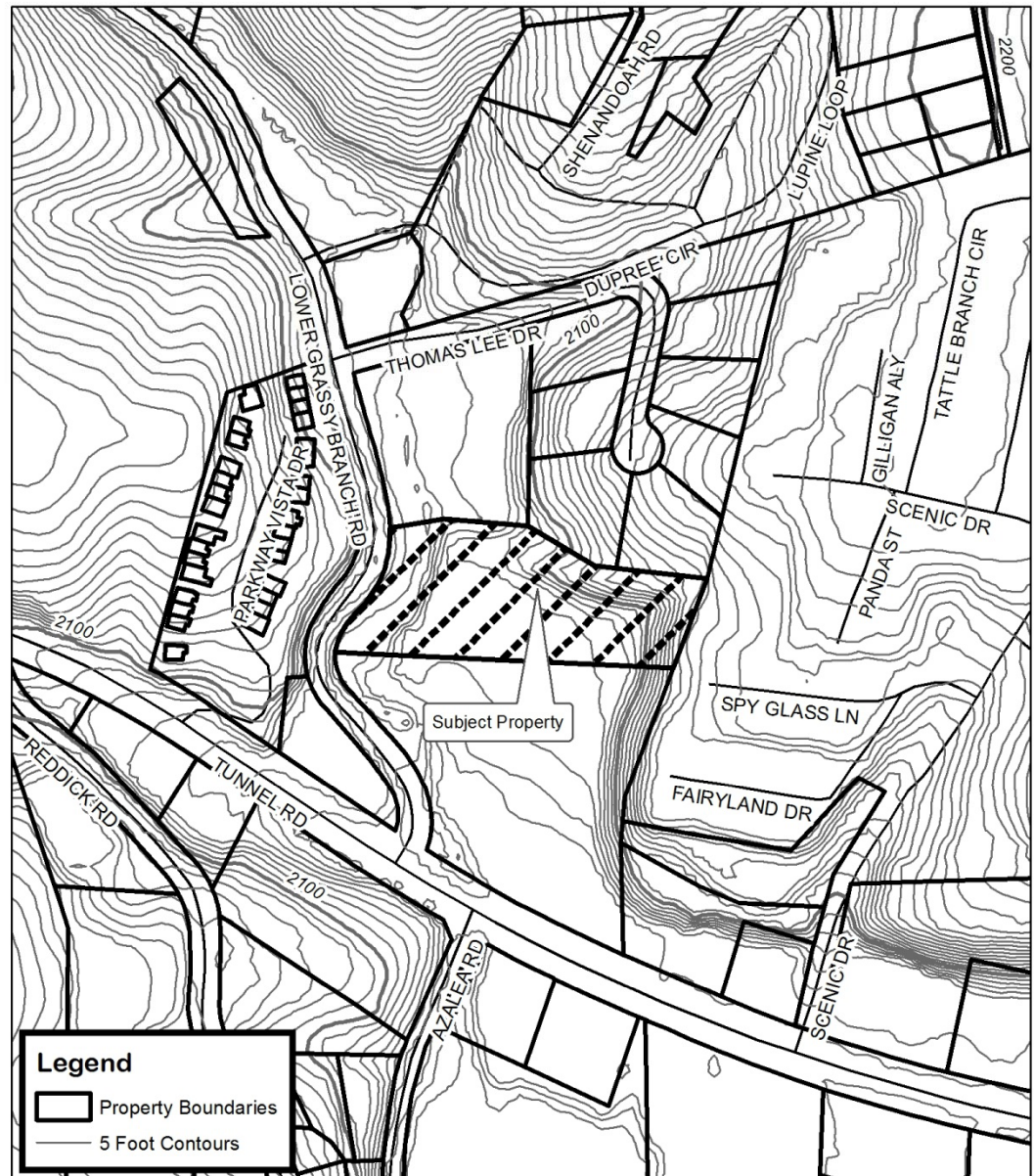


## Carl H. Ricker, Jr.

- Request CS from R-3
- Staff Recommendation:
  - Approval
- Planning Board Recommendation:
  - Approval



**Carl Ricker, Jr.**

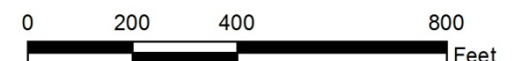
### Map Amendment

Case Number: ZPH2012-00051

Property Size: 3.32 acres

Application Date: August 31, 2012

Planning Board Hearing Date: October 1, 2012



Created By: Buncombe County Planning  
Date: September 11, 2012

## Carl H. Ricker, Jr.

- Request CS from R-3
- Staff Recommendation:
  - Approval
- Planning Board Recommendation:
  - Approval



**Carl Ricker, Jr.**

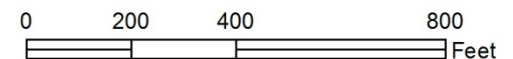
### Map Amendment

Case Number: ZPH2012-00051

Property Size: 3.32 acres

Application Date: August 31, 2012

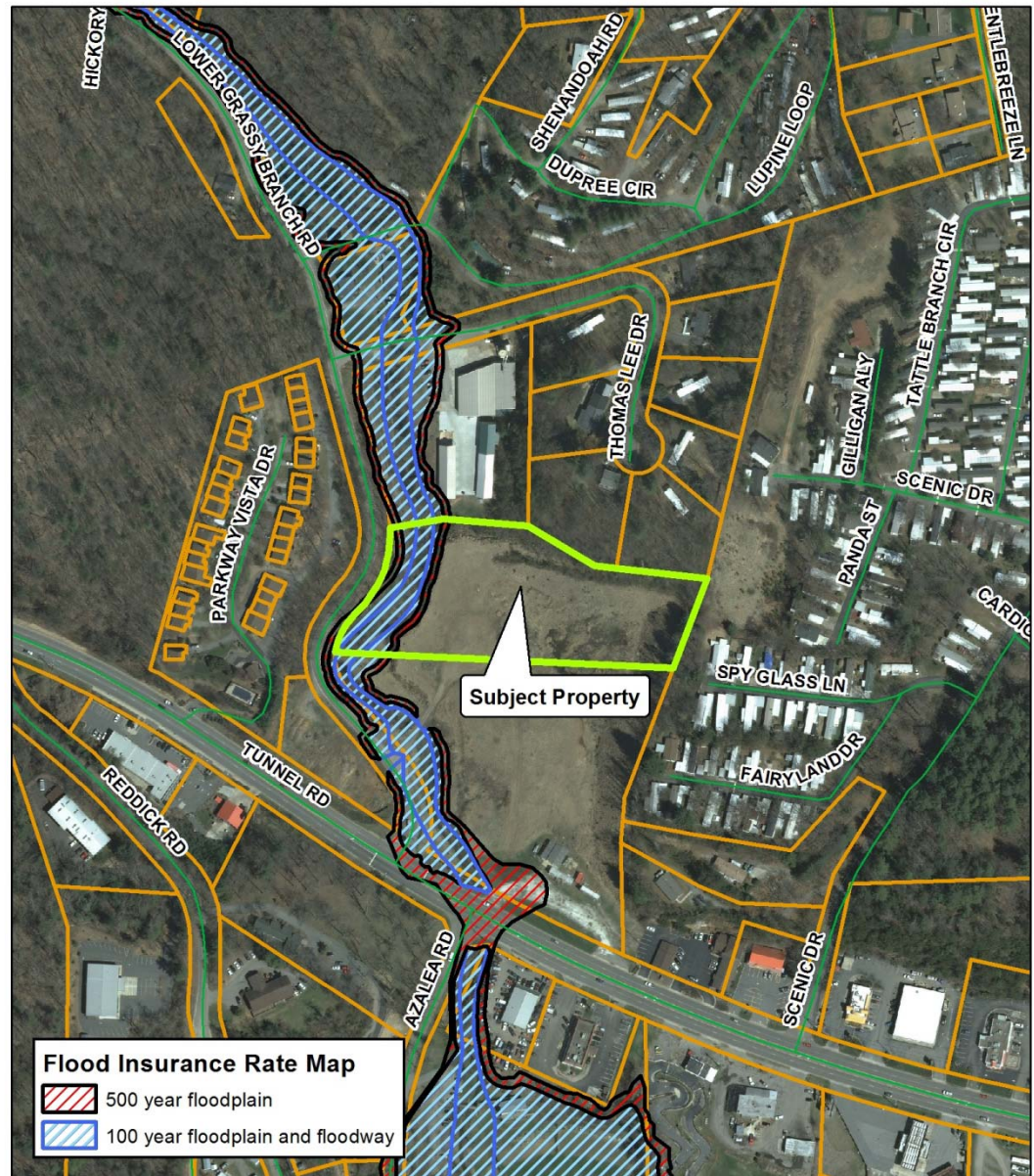
Planning Board Hearing Date: October 1, 2012



Created By: Buncombe County Planning  
Date: September 11, 2012

## Carl H. Ricker, Jr.

- Request CS from R-3
- Staff Recommendation:
  - Approval
- Planning Board Recommendation:
  - Approval



Carl Ricker, Jr.

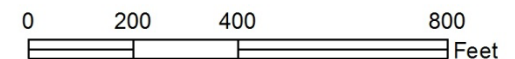
### Map Amendment

Case Number: ZPH2012-00051

Property Size: 3.32 acres

Application Date: August 31, 2012

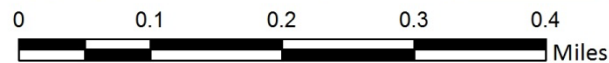
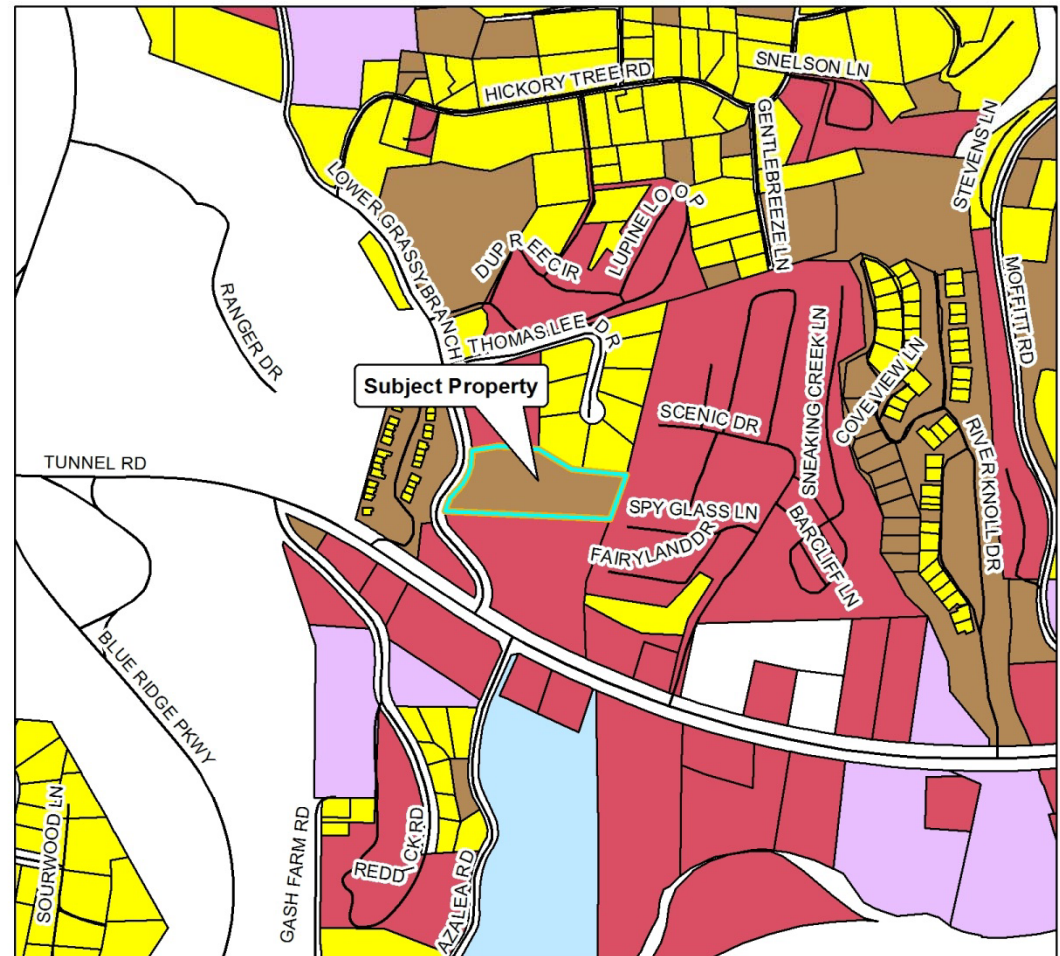
Planning Board Hearing Date: October 1, 2012



Created By: Buncombe County Planning  
Date: September 11, 2012

## Carl H. Ricker, Jr.

- Request CS from R-3
- Staff Recommendation:
  - Approval
- Planning Board Recommendation:
  - Approval



### Carl Ricker, Jr. Map Amendment



Case Number: ZPH2012-000051  
Property Size: 3.32 acres  
Application Date: August 31, 2012  
Planning Board Hearing Date: October 1, 2012

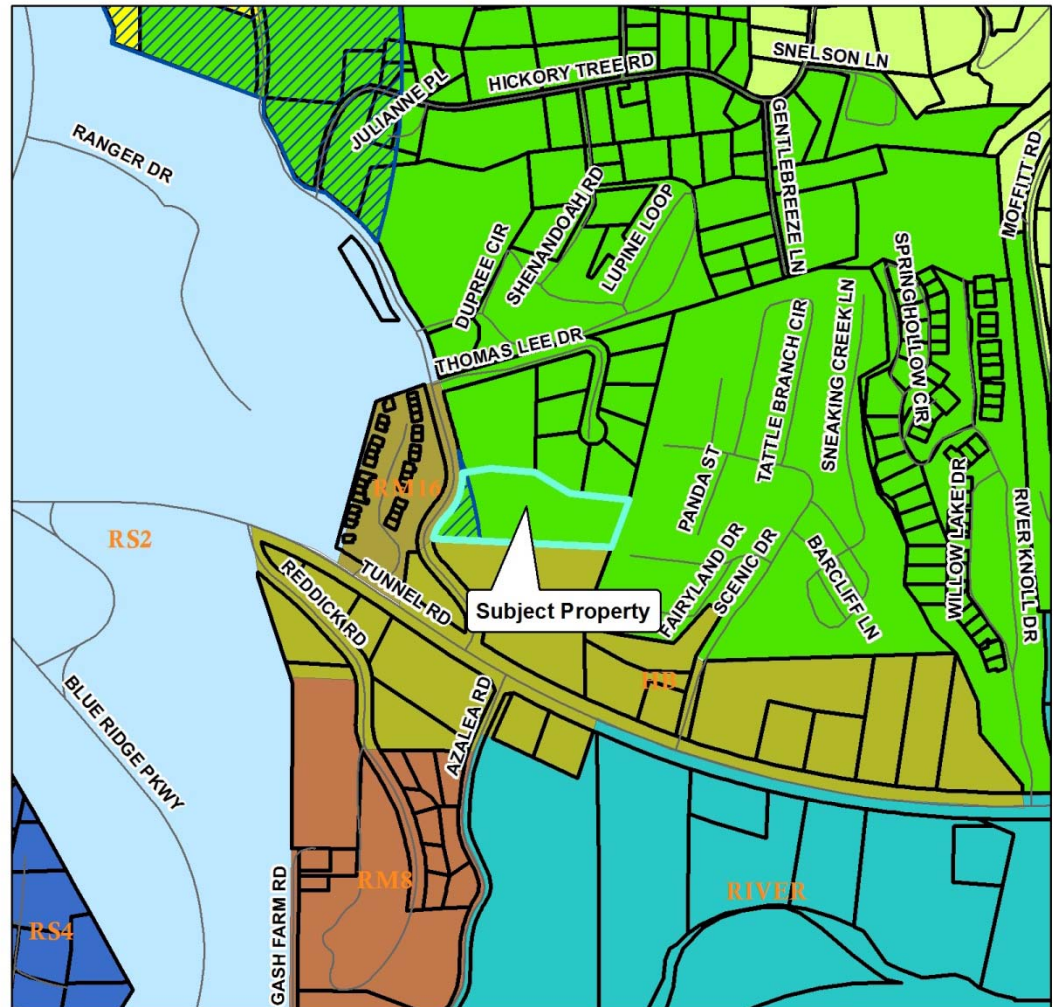
Created By: Buncombe County Planning  
Date: September 11, 2012

#### Assessed Use

	Forestry, Conservation, Parks
	Agricultural
	Public Services
	Community Services
	Recreational, Entertainment
	Industry
	Commercial
	Vacant Land
	Residential

# Carl H. Ricker, Jr.

- Request CS from R-3
- Staff Recommendation:
  - Approval
- Planning Board Recommendation:
  - Approval

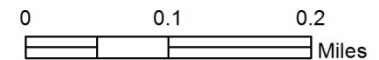


## Carl Ricker, Jr. Map Amendment



Zoning Districts		Zoning Overlays			
	BDM		R-1		Blue Ridge Parkway Overlay
	CS		R-2		Protected Ridge Overlay
	EMP		R-3		Protected Ridge & Parkway
	NS		R-LD		Steep Slope/High Elev.
	OU				Steep Slope/High Elev. & Pkwy

Case Number: ZPH2012-00051  
 Property Size: 3.32 acres  
 Application Date: August 31, 2012  
 Planning Board Hearing Date: October 1, 2012



Created By: Buncombe County Planning  
 Date: September 11, 2012