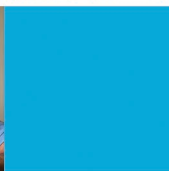
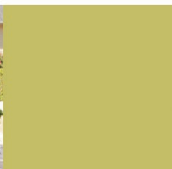




We can make
a difference with
**Community
Effort**

Protect Elders and Adults
with Disabilities from
**Abuse, Neglect
and Exploitation**



Recognize the Signs

Abuse is when a caretaker of an elder or adult with disabilities causes physical or mental pain, limits movement or activities of the adult, or withholds care or resources from the adult.

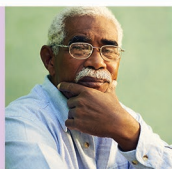
Exploitation is when someone illegally or improperly uses the resources of an elder or adult with disabilities.

Caretaker Neglect is when a caretaker of an elder or adult with disabilities fails to provide necessary services to avoid harm and maintain health.

Self-Neglect is when an elder or an adult with disabilities, who lives alone or has no caretaker, is not able to care for one's self.



REPORT abuse,
neglect, and exploitation
against elders and adults
with disabilities.
Contact your local
county office.



When in Doubt...
ALWAYS
Make a Report

You Can Help

If you have any reason to believe an adult with disabilities or elder is being abused, neglected, or exploited then you are required by NC law to make a report to your local county social services office.

It's easy to make a report. You don't need proof and you do not have to reveal your name. All reporter information is kept confidential.

Report Abuse

Buncombe County Health & Human Services
Adult Abuse Report Line: **(828) 250-5800**

Emergency Numbers

Sheriff's Office: (828) 250-6670

Asheville Police Dept.: (828) 252-1110

Biltmore Forest Police Dept.: (828) 274-0822

Black Mountain Police Dept.: (828) 419-9350

Weaverville Police Dept.: (828) 645-5700

Woodfin Police Dept.: (828) 253-4889



Buncombe County Health & Human Services