



# **“MANAGING PANIC”**

## **EMERGENCY PLANNING for the LOCAL CHURCH**

*Therefore take heed to yourselves and to all the flock,  
among which the Holy Spirit has made you overseers,  
to shepherd the church of God which He has  
purchased with His own blood.*

*Acts 20:28*

# How to Stay Safe in the World Today



Avoid riding in automobiles because they are responsible for 20% of all fatal accidents.

# How to Stay Safe in the World Today



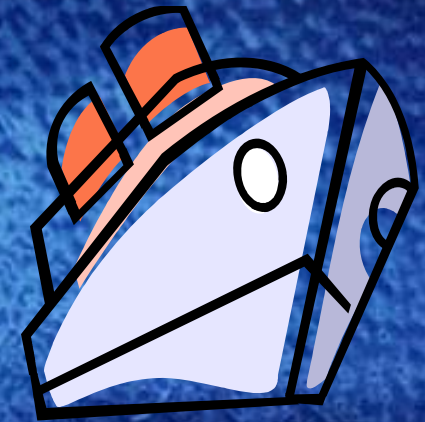
DO NOT stay at home because 17% of all accidents occur in the home.

# How to Stay Safe in the World Today



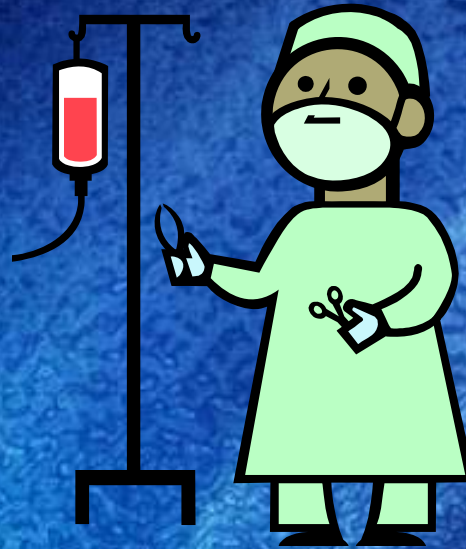
Avoid walking on streets or sidewalks because  
14% of all accidents involve pedestrians.

# How to Stay Safe in the World Today



Avoid traveling by air, rail, or water because 16% of all accidents involve these forms of transportation.

# How to Stay Safe in the World Today

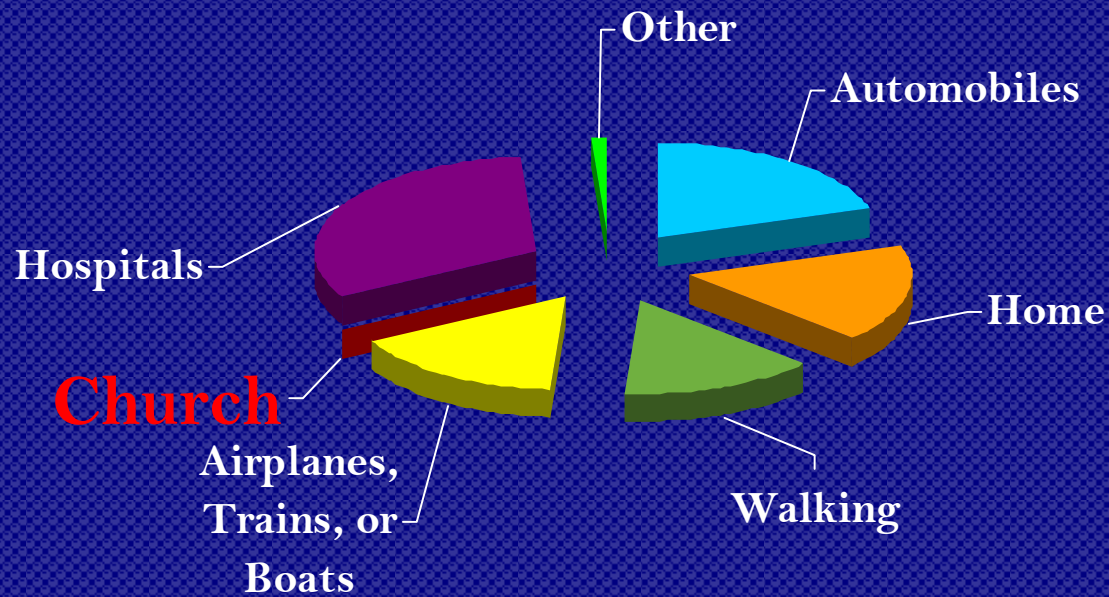


Of the remaining 33%, 32% of deaths occur in hospitals. So, above all else avoid hospitals.

# How to Stay Safe in the World Today



You will be pleased to learn that only .001% of all deaths occur in worship services in church, and these are usually related to one of the previous accidents.



Therefore, logic tells us that the safest place for you to be at any given point is at church!



# How to Stay Safe in the World Today



And Bible study is safe too. The percentage of deaths during bible study is even less.

# How to Stay Safe in the World Today

So,...for *SAFETY'S* sake,



Attend Church...  
And, read your Bible



IT COULD SAVE YOUR LIFE !

# Why Be Concerned?

Pastors and churches are often times considered  
Controversial.

Many church services are televised and can become  
targets for attack.

Churches typically have little security on site,  
collect money and, few are able to defend themselves  
against an attacker.

# Why Be Concerned?

It's easier to attack a softer target that has personnel with low levels of awareness.

All houses of worship have visible predictable points and patterns.

Most facilities rely exclusively on physical and procedural Security.

# Why Be Concerned?

The focus of most security is from the inside looking out.

Faith-based personnel typically are not trained on awareness, threat recognition or conflict resolution.

When Security/Law Enforcement and/or Fire/EMS are called to interdict, it may already be too late.

# Who's Worshiping with you?

Police: Suspect kills self after church shooting.  
Woman killed, man and child wounded.

DETROIT, Michigan (AP) -- A man who opened fire with a shotgun during a church service Sunday morning killed a woman and wounded two people before he shot himself a mile away, police said.

Investigators believe a domestic dispute led to the shooting at Zion Hope Missionary Baptist Church.



# Who's Worshiping with you?



Aug 1, 2006 08:56 AM EDT

**Cops: Wife Pulls Gun on Pastor in Church**

A preacher's wife was arrested after police say she pulled a gun on her husband because she allegedly was upset over text messages he had sent to a member of a church youth group.

Tammy Estes surrendered to law officers at the Pentecostal Church of God in Newport after a brief standoff at the church Sunday evening. No one was injured.



# Who's Worshiping with you?



February 10, 2006

Darien, Conn.

Contaminant That Sickened 40  
at Church Is Still Mystery



Police say that grape juice that sickened about 40 parishioners during communion at a Baptist church here was deliberately contaminated with a still unknown substance.

The juice was poured into small cups at the service on Sunday at Calvary Baptist Church. The parishioners drank the juice at the same time, and they immediately knew something was wrong.



# Our Calling as Ministers

As ministers we are called to lead. More specifically, we are called to *shepherd* the flock.

As shepherds, we have specific duties and responsibilities to our churches.

The shepherd used tools to aid his effectiveness.

The primary tool of the shepherd was the staff or rod.

# The Staff of the Shepherd

The staff has many functions:

Function	Reference
Aid and Comfort	Psalm 23
Protection	Psalm 23, Is. 54:17
Power	Psalm 23
Defense	Psalm 18:1-3
Correction	Proverbs 3:11-12
Climbing & Traveling	2 Kings 4:29

# “CRIME PREVENTION”

Crime prevention is the anticipation, recognition and appraisal of a crime risk and the initiation of some action to remove or reduce the risk.

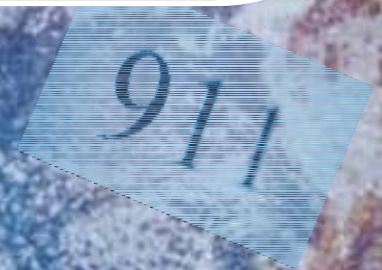
## WHAT IS A CRISIS?

A sudden, generally unanticipated event that profoundly and negatively affects a significant segment of the campus population and often involves serious injury or death.

# What Is an Emergency Action Plan?

An Emergency Action Plan is a written directive issued by church leaders that coordinates the actions of the church before, during and, after an incident occurs.

The effective plan not only looks at incidents but at the physical plant as well as the overall operation of the church and addresses specific needs.



# Who is Required to Have a Plan?

The U.S. Department of Labor, Occupational Safety & Health Administration states:

“Almost every business is required to have an emergency action plan (EAP).”

“If fire extinguishers are required or provided in your workplace, and if anyone will be evacuating during a fire or other emergency, then OSHA’s 29 CFR 1910.157 requires you to have an Emergency Action Plan.”

# What Should We Consider When Writing Our EAP?

The Community

Church Property as a Whole

The Process and Procedure

The Building

The Church' Response to Incidents

The People Within the Church

# Examine the Outside

Sidewalks

Controlled Access /  
Vehicular & Pedestrian

Signage

Audible Alarm

Greeters and On  
Site Security

The View of the Building

Lighting

Landscaping / Vegetation  
and Hardscape

# Examine the Outside

A/C Units in or Under  
Windows

Unsecured Items

Hiding Places



# Examine the Building

Security Devices on  
Doors and Windows

Fire Escapes &  
Evacuation Routes

Lighting

Is Building in Good Repair?

Panic Bars on All  
Evacuation Doors

First Aid Kits

Are Valuable Items  
Secured When Not in Use?

Exposed Door Hinges

Alarm System

Interior & Exterior  
Audible Alarm

Knox-Box

Fire Extinguishers  
Readily Available

Are Doors Master-Keyed?

# Process and Procedure

What do we do in the event of:

- Assault
- Bodily Fluid Spills
- Bomb Threats / Suspicious Packages
- Burglary / Larceny
- Child Abuse
- Severe Weather Response

- Disaster Response Kit
- Disorderly Conduct
- Emergency Contact List
- Evacuation Procedure
- Fire / Explosion
- Foreign Substance / Poison

# Process and Procedure

- On-Campus Emergencies
- Property Identification / Marking
- Robbery / Theft
- Severe Weather
- Shelter-In-Place

- Suicide
- Emergency Response Team
- Total Loss Procedure
- Utility Shut Off /
- Electrical Outage
- Vehicle Usage

- Information Technology
- Disaster Recovery Plan
- Intruder with  
Weapon or Threat
- Kidnapping / Missing  
Person / Abduction
- Lockdown Procedure
- Media Communications

# Emergency Response Kit

An Emergency Response Kit contains documents and items that will aid the Team and other church leaders in a crisis situation.

A minimum of two kits should be stored and available at a moment's notice.

Kits should be stored in a planned, available location for each building.

A master kit stored at a secured off-site location such as the parsonage or other location where it can be accessed easily.

# Emergency Response Kit Contents

- Blue Prints and Floor Diagrams
- Aerial Photographs of Campus
- Clergy and Staff Roster

- Contact Numbers of Emergency Team Members
- Two-Way Radios
- Battery Operated Weather Radio

- Keys to *ALL* Doors (Inside & Outside)
- Church Membership List
- Policy and Procedure Manual

# Emergency Response Kit Contents

- List of Emergency Team members and Individual Duties
- Reflective Vests or ID Tags for Team Members
- Vital Records – Whatever is necessary to operate the church offsite after an emergency, i.e., financial records, insurance policies, articles of incorporation, etc.
- Disposable cameras

- Photos of church members / *Current* church directory
- List of Members with Special Needs
- Utility Turn-off Procedures:
  - Fire Alarms
  - Sprinklers
  - Electric
  - Gas
  - Cable

# How Do We Get Started?

Identify those in your congregation with expertise that can assist with policy development and solicit their assistance.

Contact your local law enforcement agency and request a *Security Risk Assessment* for the church.

Contact your local fire department and Emergency Management Office and ask for assistance.

Conduct a walk-thru of the church property looking for hazards. Include building managers and/or custodians.

# How Do We Get Started?

Contact other churches and request a copy of their policy.

When a policy has been developed, conduct table-top exercises to address inconsistencies.

Schedule an annual policy review. Make updates as needed.



# A Few Things to Remember



In a crisis, church leaders  
*“MANAGE PANIC”*



Any plan that is not practiced is nothing  
more than a bunch of words on a page.



You are not in this process alone. Utilize your resources.  
Law enforcement, fire, and emergency Personnel are  
always available and ready to assist your church.

# Resources

## Crime Prevention Units

Buncombe County Sheriff's Office

250-4547

Asheville Police Department

259-5834

## Fire Marshall

Buncombe County

255-5087

## Emergency Management

Buncombe County

255-5638

## NC Dept. of Labor

[www.nclabor.com](http://www.nclabor.com)

## U.S. Dept. of Labor

[www.osha.gov](http://www.osha.gov)

# Credits

- Starr Barbaro  
North Carolina Governor's Crime Commission
- Tim Einsman,  
Director of Operations  
Biltmore Baptist Church  
Asheville, NC
- North Carolina Justice Academy
- U.S. Department of Labor
- N.C. Department of Labor

# *“MANAGING PANIC”*

*Buncombe County Sheriff's Office  
Crime Prevention Unit*

*202 Haywood Street  
Asheville, NC 28801*

*250-4547*

