



EXPANDING COMPOST DROP-OFF

Presented by

Cassandra Lohmeyer

Solid Waste



TIMELINE

August 2020: City of Asheville awarded NRDC Food Matters grant

October 2021: First City (Stevens-Lee) and County (Landfill) drop-off sites open

March 2022: County is awarded \$22,500 CWRAR grant to expand drop-off sites

July 2022: Begin use of CWRAR grant funding



CURRENT DROP-OFF SITES

Buncombe County Landfill

October 2021



Stephens-Lee Recreation Center

October 2021

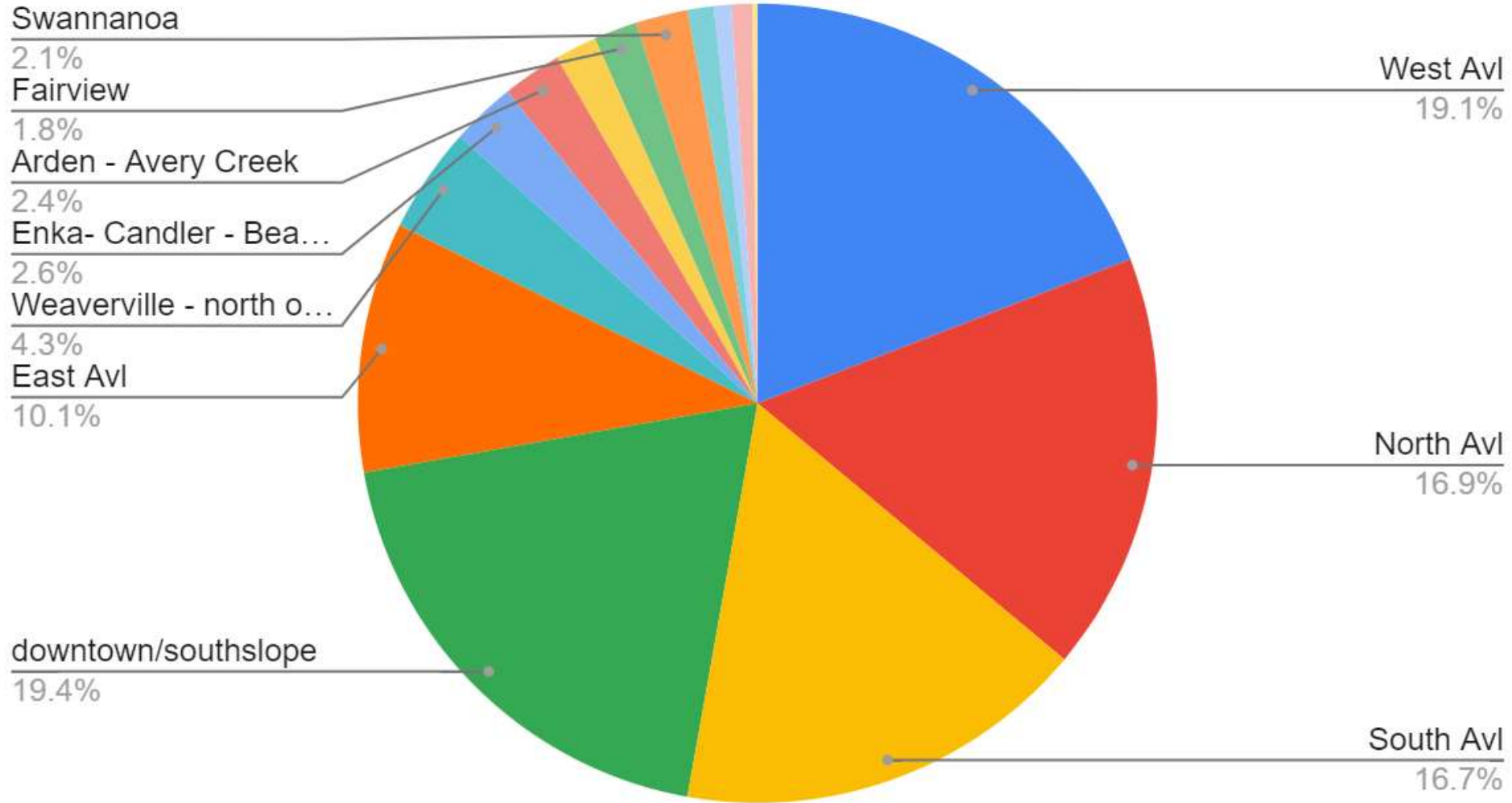


Oakley Recreation Center/Library

July 2022



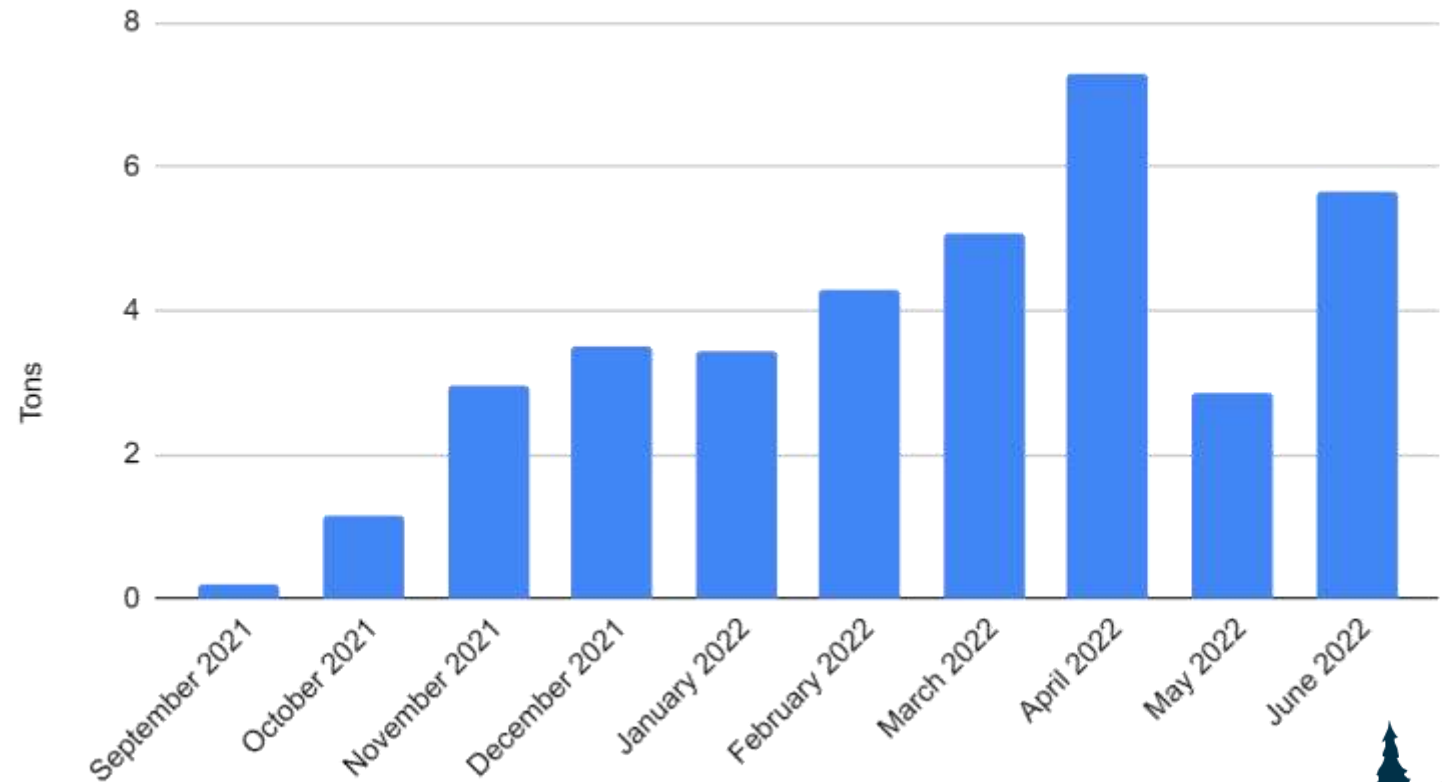
Current Drop-Off Participation by Zip Code



ORGANICS IN BUNCOMBE COUNTY

- **Nationally:** divertible organic matter comprises over 50% of landfill mass
- **Buncombe County:** recent data suggest around 38% of total waste is organic
- **Current program:** diverting 3.5 tons/month, still large percentage remaining

Organic Waste Diverted



COMPOST BENEFITS

- Locally collected and processed by Danny's Dumpster
 - Finished compost available for purchase at their facility
- Why compost?
 - **Waste reduction**
 - Over half of all waste in landfills is organic matter, most of which can be diverted and composted
 - **Soil amendment**
 - High quality, natural fertilizer that provides essential plant nutrients and bolsters soil ecosystems
 - **Climate change**
 - Greenhouse gas reduction potential



LET'S MAKE COMPOST!

YES!

All foods (raw, cooked, scraps) and plant trimmings



Leave produce bags/stickers OUT of your collection.

YES!

Compostable paper and plastic products



MATERIALS CAN BE COLLECTED LOOSE AND FREE!

If you choose to bag your food scraps, use only paper bags or certified BPI compostable "bio bags."
NO OTHER TYPE OF BAGS WILL BE ACCEPTED.

NO!



Plastic bags
and wrappers



Plastic-coated (shiny)
take-out boxes and plates



To-go hot and cold
drink cups

DEACS CWRAR GRANT

Department of Environmental Assistance and Customer Service's
Community Waste Reduction and Recycling

- **\$22,500** for program expansion in FY23
- 2-4 expansion sites at libraries
 - Partnering with the City (recreation centers)
- Signs, installation materials, print materials, kitchen totes
 - County covers all operational maintenance costs, including hauling contract



1. Scan QR code or visit buncombecounty.org/composting



FOOD SCRAPS DROP-OFF
• LET'S MAKE COMPOST! •

INSTRUCTIONS

- Remove all produce stickers, rubber bands, wrappers, ties, bags, and plastics
- Empty food scraps and compostable waste into the cart
- Close and secure lid when finished
- Do not overfill!

More info? www.buncombecounty.org/composting

See an issue? Contact recycling@buncombecounty.org





Scan BC QR code for information.

2. Fill out online registration form (zip code and # people per household collected as data)

Register Today

5. Educational materials will be available on our website and at drop-off sites



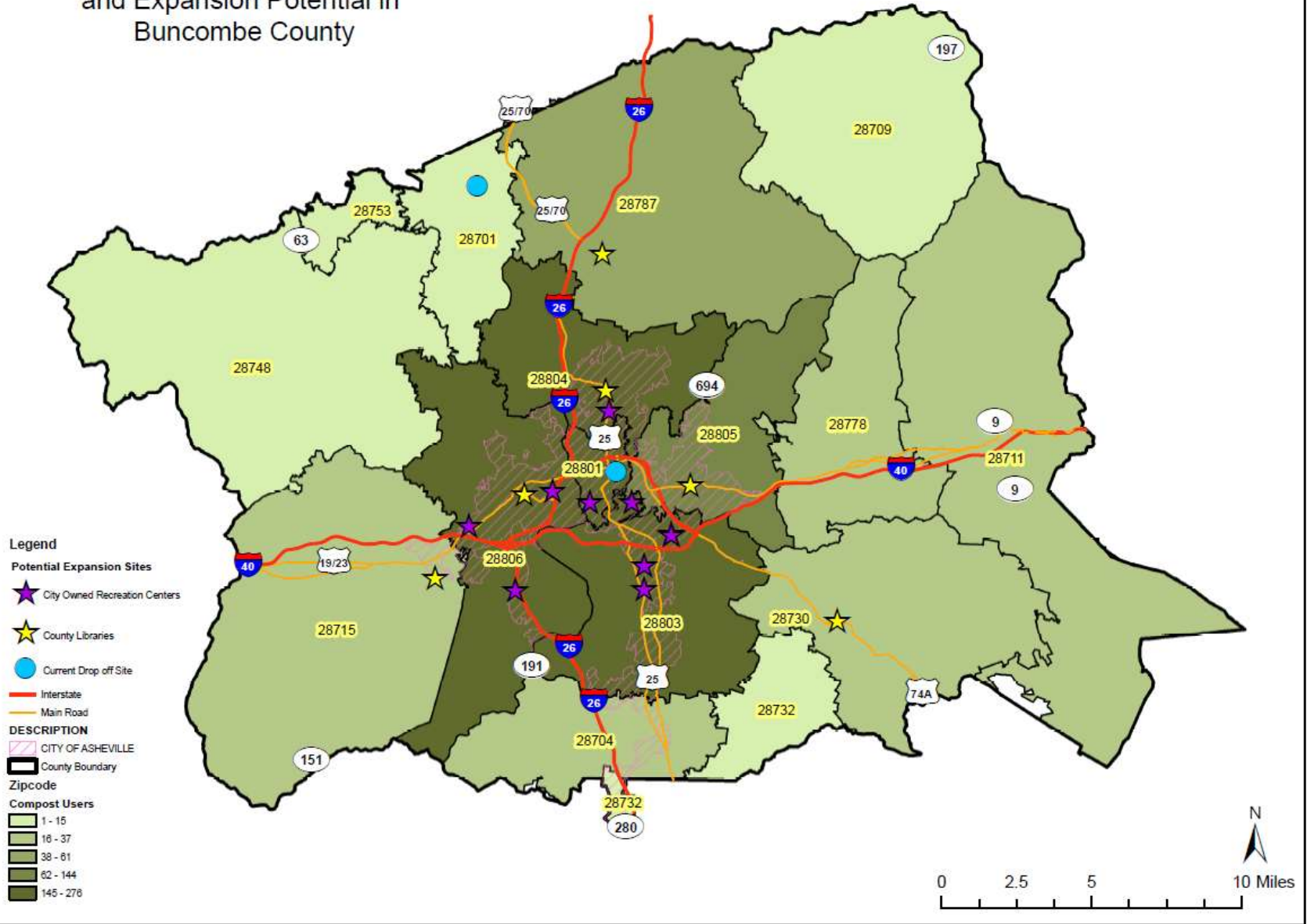
3. Receive email with shed lock code and pilot program participation instructions



4. Residents can use the drop-off site closest to them



Compost Drop-Off Registration and Expansion Potential in Buncombe County



ESTIMATED GRANT TIMELINE

- **Summer 2022**
 - Open fourth drop-off site (West Asheville Library)
 - Expand education plan
- **Fall 2022**
 - Open fifth drop-off site
 - Host promotional event
- **Spring 2023**
 - Open one to two more drop-off sites, if/as needed
 - Host second promotional event

