



# Comprehensive Plan CONSULTANT SELECTION PROCESS

---

*Presented by*

**Planning & Development  
Department**



# Consultant Role

Consultant to guide the planning process and provide services and support for the creation of a 20 year plan

## Consultant Role:

- Engage citizens, staff, and the community in the process
- Compile and analyze data and prior plans
- Develop goals, policies, and actions to achieve the vision
- Draft the plan and present to Boards for feedback/adoption



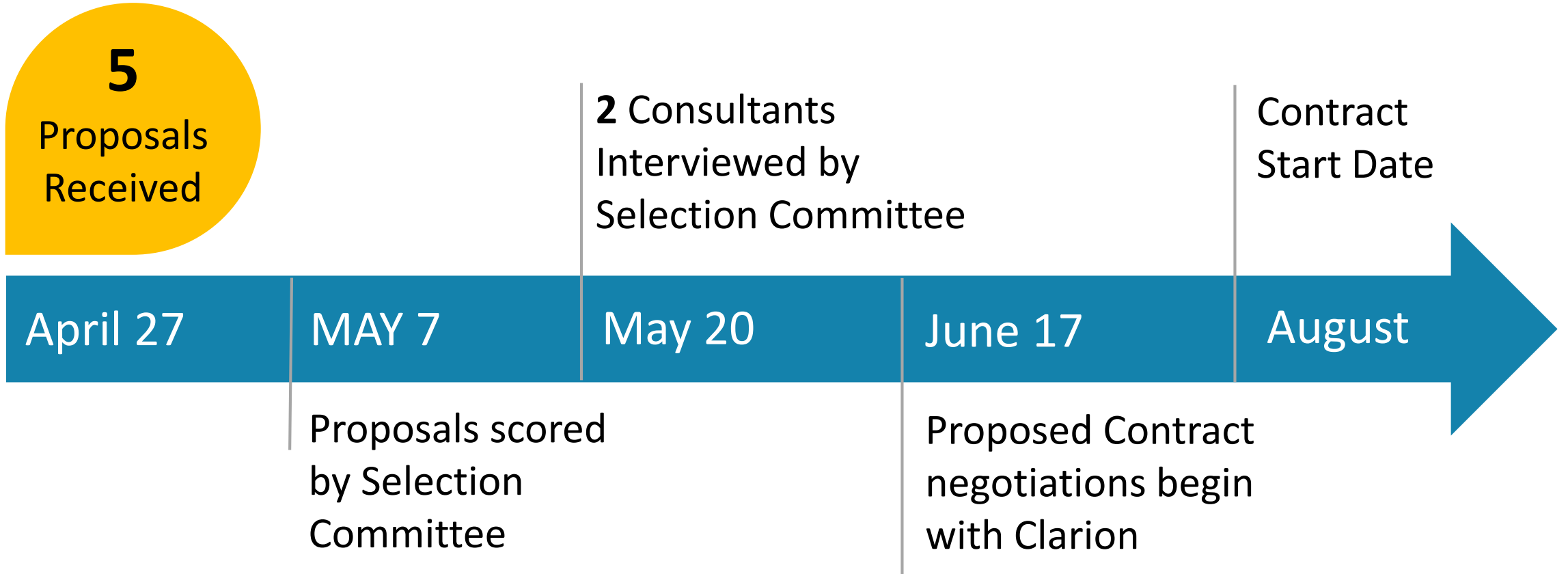
# Request for Proposals (RFP)

- 5 Proposals Received
  - Scored by the Selection Committee:
    - Nancy Waldrop – Planning Board Chair
    - Rasheda McDaniels – CAPE
    - Jim Blanton – Libraries
    - Sybil Tate – County Manager’s Office
    - Timothy Love – County Manager’s Office
    - Jennifer Harrison – Agriculture & Land Resources
    - Nathan Pennington – Planning & Development
    - Gillian Phillips – Planning & Development
  - 2 Consultants Interviewed by the Committee
- ❖ Scoring based on the RFP requirements:
    - Quality of previous work detail and design
    - Experience with similar communities
    - Experience creating a Comprehensive plan
    - Clear, realistic process and timeline
    - Equitable and inclusive public engagement
    - Robust communication techniques
    - Equity focus throughout
    - Addresses the core components needed
    - Adequate and effective use of budget
    - Sufficient staffing

➤ CLARION selected



# Consultant Timeline



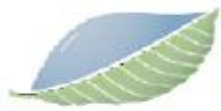
# CLARION



TRAFFIC PLANNING AND DESIGN, INC.



NEMAC+FernLeaf



EQUINOX  
*balance through proper planning*



RRC  
ASSOCIATES



# 1

PHASE 1:  
LAUNCH  
PROJECT

Months  
**1-2**

# 2

PHASE 2:  
ESTABLISH THE  
VISION AND  
GOALS

Months  
**3-5**

# 3

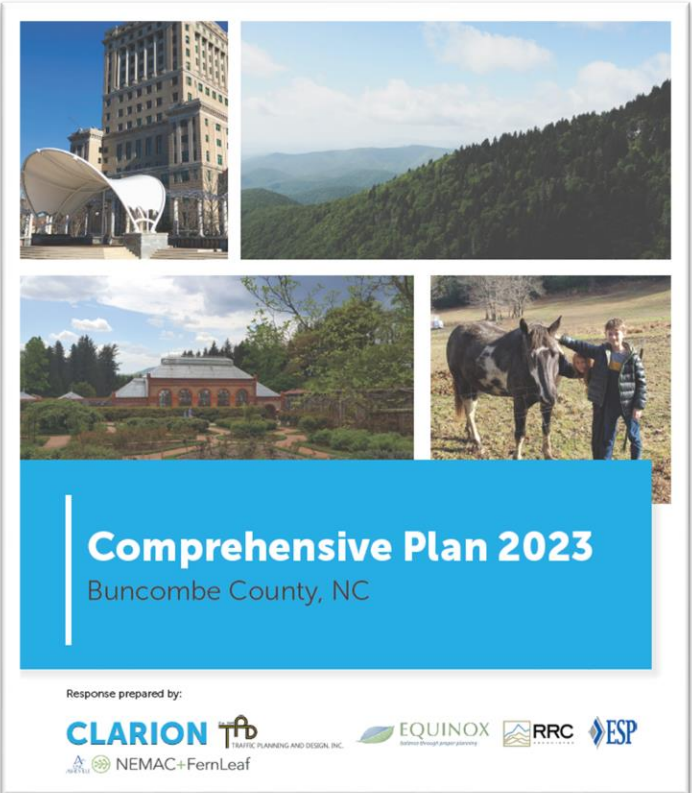
PHASE 3:  
DEVELOP  
POLICIES AND  
STRATEGIES

Months  
**6-12**

# 4

PHASE 4:  
ADOPT PLAN

Months  
**13-21**



BUNCOMBE COUNTY

