

JUSTICE RESOURCE UPDATE

February 20, 2018

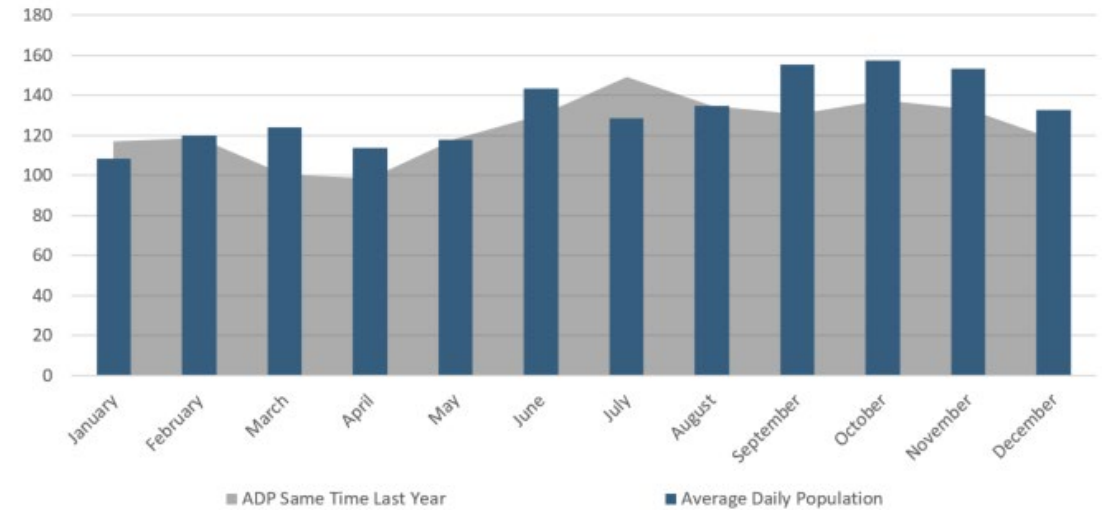
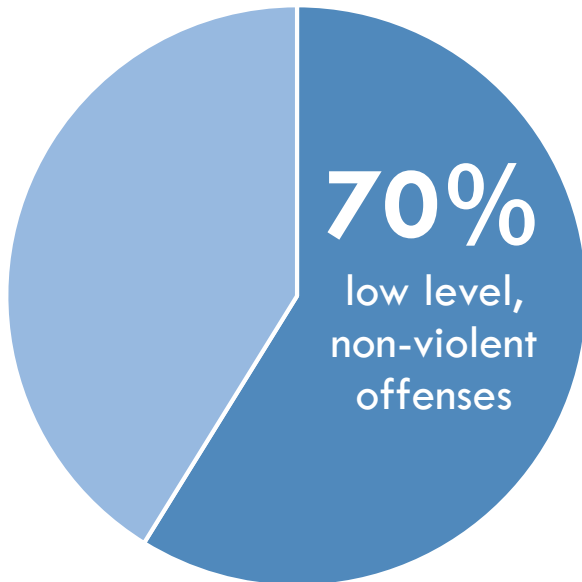
Leveraging best practices to enhance system efficiency,
promote wellness and protect community safety



CRITICAL COMMUNITY ISSUE

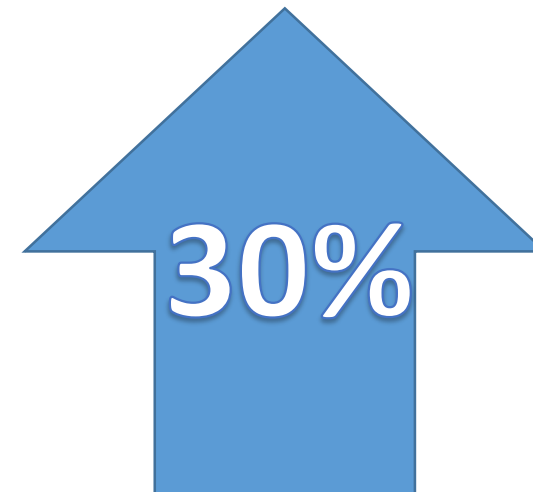
Jail Numbers on the Rise

- Our jail housed more than 7,500 people in 2016
- This population increased 7% from 2015 to 2016



Women in Jail

The number of women in the local jail jumped nearly 30% from 2015 to 2016



Substance Abuse Impacts

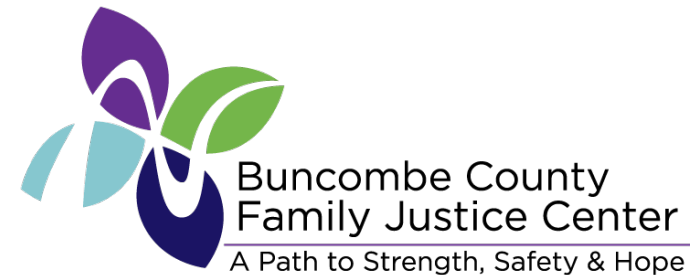
Nearly 800 inmates were monitored for substance withdrawal in 2016, also nearly a 30% increase from 2015

BUNCOMBE IS ALREADY A LEADER

Local programs based on national models:

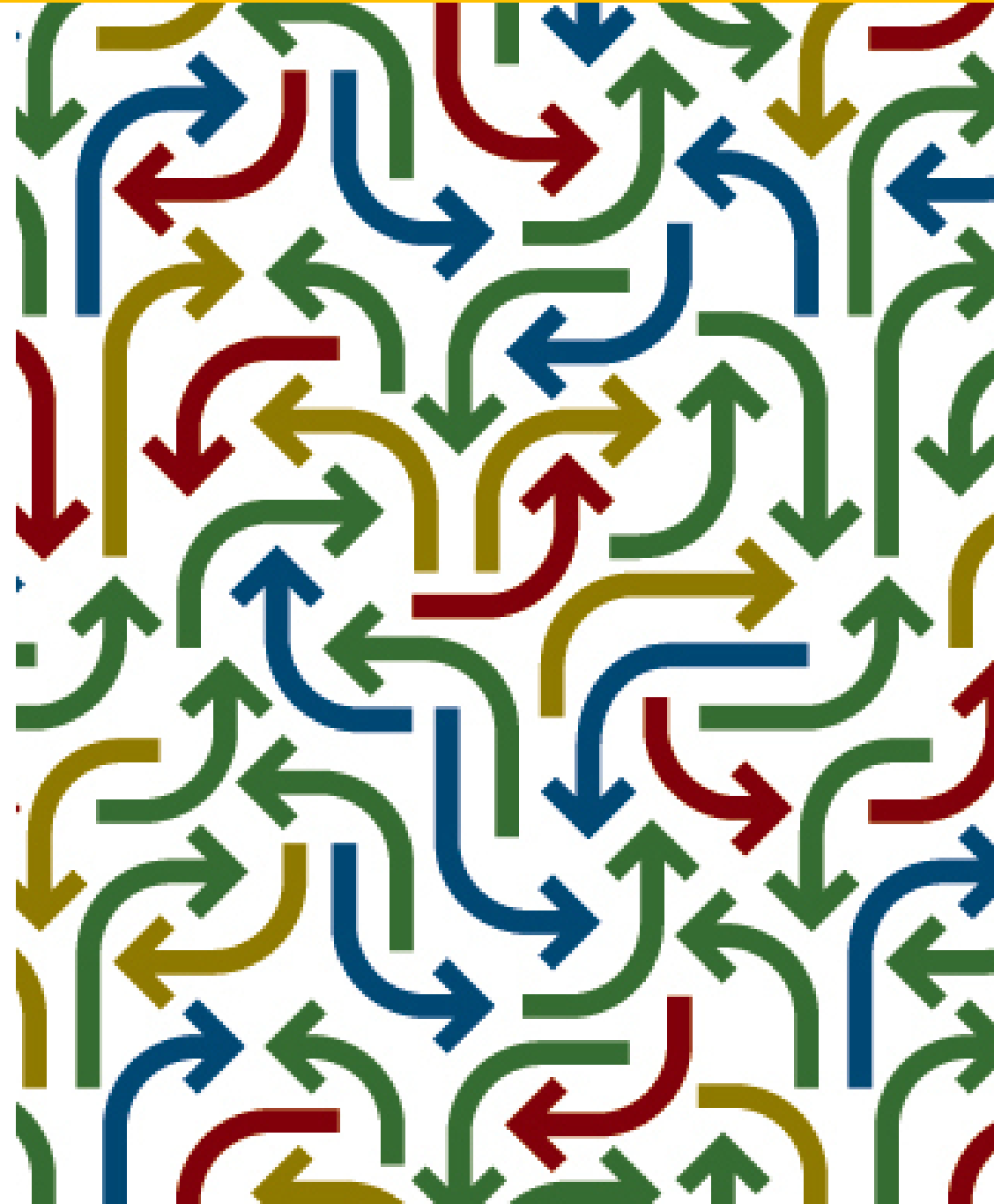
- Specialty Courts – DWI, Drug Treatment, Veterans
- Crisis Intervention Team
- Jail case management
- High utilizer support
- Navigation for High Risk Uninsured
- Pre-Trial release

Recent landmark efforts to coordinate systems:



SYSTEM COORDINATION NEEDED

- Fragmented system
- Lack of coordination & efficiency
- Limited diversion options
- Disconnected from community resources & supports



OUR STRATEGY

Protect Community Safety:

Public safety is paramount in the current system as well as the proposed model which enhances tools used by law enforcement and the courts

Formalize Coordination:

Establishment of a Justice Resource Collaborating Council and Coordinator will increase efficiency in a fragmented system

Invest in System Gaps:

Services and supports will be created for a seamless system, including a Justice Resource Center, Detention-based Prosecution, Victim Witness Legal Assistant, and enhancements to Pretrial Services

Provide Infrastructure Support:

The new model will be undergirded by a foundation for effectiveness, including a Case Management Data System, Business Intelligence, Planning & Evaluation

STRATEGIC PRIORITY



BUNCOMBE COUNTY STRATEGIC PRIORITY:

JUSTICE RESOURCE SUPPORT



PRIORITY: Coordinate a justice system that is efficient, effective, equitable and protects our public safety while holistically addressing the needs of people involved in the system.

BACKGROUND: The Buncombe County Detention Facility housed more than 7,500 people in 2016, and more than 70 percent of the 13,000 bookings were for low-level, nonviolent offenses. In addition, over 670 people return to Buncombe County each year after a period of incarceration in a North Carolina state prison. Fifty-one jail beds a day are occupied by individuals receiving treatment for a serious mental illness, and nearly 800 inmates were monitored for substance withdrawal in 2016, an almost 30 percent increase from 2015. Women are the fastest growing population in local jail - up about 30 percent from 2015 to 2016. Nationally, 95 percent of women who have been incarcerated have a history of trauma. Involvement in the criminal justice system can have lifelong effects for individuals and their families, including barriers to accessing housing, employment, education and financial assistance. In Buncombe County in 2016, African-Americans made up 5.6 percent of the general population yet comprised 28 percent of those jailed in the local detention facility. It is estimated that there are over 3,400 domestic violence victimizations in Buncombe County each year, and over 670 people seek services for sexual assault.

GOALS:

- Enhance the efficiency and effectiveness of the criminal justice system.
- Focus on law enforcement approaches informed by best practices for serving people impacted by mental illness, addiction, homelessness, poverty and trauma.
- Offer diversion and alternatives to incarceration for low-level, first-time nonviolent offenders and people with mental illness and substance use disorders.
- Focus on community-based pretrial justice solutions while prioritizing safety and offender accountability.
- Support people who are incarcerated and those re-entering the community from incarceration.
- Offer trauma-informed support for victims of crime, particularly domestic violence and sexual assault.

LEAD DEPARTMENTS: Health and Human Services; Justice Resources; Pretrial Services; Sheriff's Office; Strategic Partnerships.

December 2017



www.buncombecounty.org

OUR FOCUS

**Justice
Resource
Advisory
Council**

**Justice
Resource
Center**

**Pretrial
Services**

**Expedited
Prosecution**

Justice Resource Advisory Council

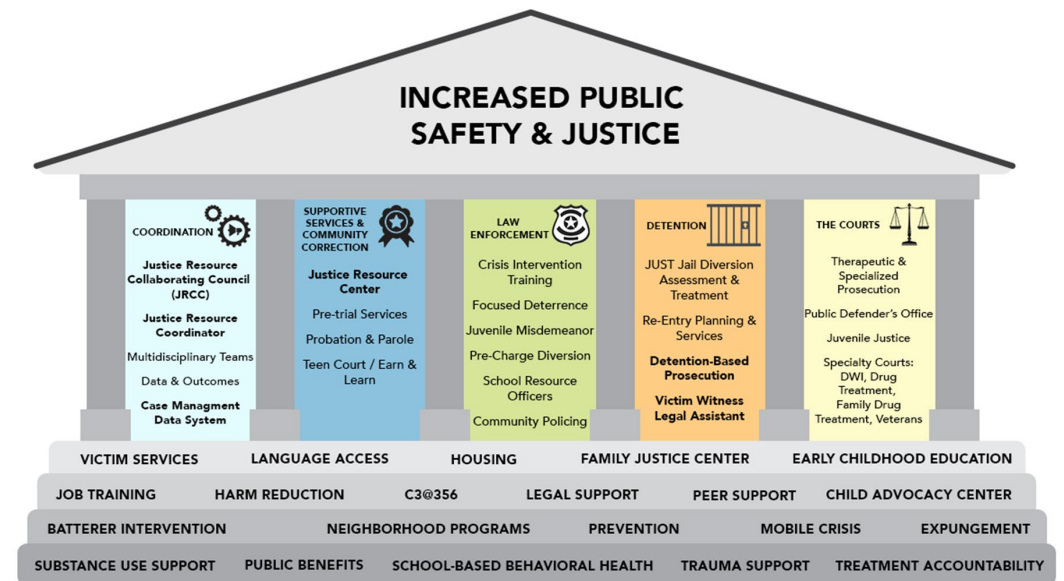
The purpose of the Council is to serve as an advisory body to the policy makers, judiciary, and stakeholder groups of the criminal justice system in Buncombe County. The Council examines potential improvements to the system, sets priorities, makes recommendations, and guides their implementation.

The Justice Resource Advisory Council is designed to enhance the efficiency and effectiveness of the Buncombe County criminal justice system.

It is a collaborative initiative with leadership from Buncombe County and representatives from the criminal justice and court system leaders to discuss systemic planning and coordination for crucial needs in the criminal justice system.

Justice Resource Coordinator

The Justice Resource Coordinator provides staff support to the Justice Resource Advisory Council in its priorities including development and implementation of Justice Resource Center.





BUNCOMBE COUNTY
**JUSTICE
RESOURCE
CENTER**

Jan-June 2017

- Convene council
- Identify needs
- Research models
- Secure Resources
- Define structure
- Identify vendors

July – Sept 2017:

- Begin Coordinator
- Execute contracts
- Design programs, protocols, technology
- Prepare Facility

Oct 2017 & beyond:

- Launch Justice Resource Center
- Formalize partnerships
- Conduct outreach
- Track results
- Report to stakeholders



YOU ARE HERE



A PLACE OF OPPORTUNITY

- Career and Educational Navigation
- Case Management
- Diversion Services
- Evidence-based Classes and Education
- Expunction Support
- Public Benefits
- Reentry Services

MANY PARTNERS, ONE LOCATION

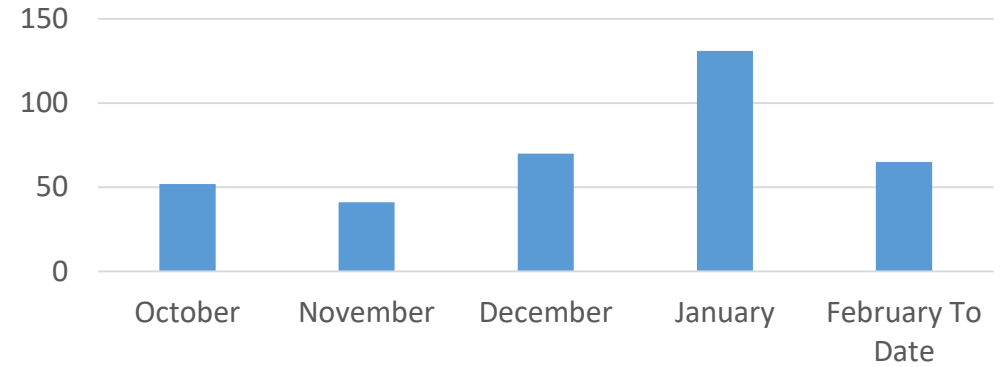




BUNCOMBE COUNTY
**JUSTICE
 RESOURCE
 CENTER**

- Since October, the Justice Resource Center has served over **376 unique individuals**.
- Nearly **90%** are receiving more than one service.
- **25** of the **33** people who have applied for public benefits via the JRC are now receiving some form of benefit, with a total value of **\$28,241**.

Number of Intakes



Program	People Served
Case Management	133
Diversion Admissions	
Adult Misdemeanor Diversion Program	80
Felony Drug Diversion Program	29
Juvenile Misdemeanor Diversion Program	12
Education and Career Navigation	53
Expunction Support	9
Public Benefits	33
Re-entry Services	112

Pretrial Services

Conducts impartial interviews and risk assessments on individuals that have been arrested and are in custody before their trial.

Provides pretrial supervision and monitoring of conditions of release as ordered by the courts.

INVESTMENTS

- Increased case management staffing by 3 additional staff
- Increase electronic monitoring (EM) units by 10 additional units: 21 people are currently assigned to EM
- Overall volume up 5% over last year



SAFETY+JUSTICE CHALLENGE

Supported by the John D. and Catherine T. MacArthur Foundation

- Innovation Grant Award: \$50,000
- Focused on pretrial domestic violence protocol
- 20 jurisdictions were selected to join in the Safety and Justice Network
- Access to technical assistance, data analysis, and performance measurement support

Buncombe County is one of 20 counties and cities to receive grants to design and test innovative criminal justice reforms

Posted on February 21, 2017 – Able Allen

Press release from Buncombe County:

The John D. and Catherine T. MacArthur Foundation announced on February 1st, 2017 that Buncombe County is one of 20 additional jurisdictions joining the [Safety and Justice Challenge](#), a national \$100 million initiative to reduce over-incarceration by changing the way America thinks about and uses jails. Buncombe County and the other jurisdictions will design and test innovative local justice reforms designed to safely drive down jail usage and reduce racial and ethnic disparities in their local justice systems.

Buncombe County was chosen following a highly competitive selection process that drew applications from across the country.

"Local jurisdictions are leading the way on justice reform," said MacArthur President Julia Stasch. "Demand for reform at the local level is considerable and growing, as evidenced by the number, diversity, and creativity of the applications we received. This momentum is encouraging, particularly as the federal justice reform landscape evolves and shifts."

Through the Challenge's [Innovation Fund](#), Buncombe County will receive support and expert technical assistance in designing and implementing local reforms. Buncombe County's innovations will focus on more effective supervision of people charged with domestic violence offenses, with the goal of assisting defendants and working with victims to increase safety by adequately managing defendants in the community and reserving jail resources for those who pose the greatest risk.

Chief District Court Judge Calvin Hill supports the additional resources. Judge Hill states, "With the financial and technical assistance provided through this grant, Pretrial Services will be able to provide additional supervision and case work for defendants charged with domestic violence related offenses. This additional resource for managing this growing population of defendants will enable the County to better manage jail resources, provide additional support services, and improve public safety."

Buncombe County and the other Innovation Fund jurisdictions will receive short-term support of \$50,000 each, are eligible for future funding opportunities, and have access to the resources, peer learning opportunities, and expertise of the [Safety and Justice Challenge Network](#). The Urban Institute, which is managing the Innovation Fund in partnership with the Foundation, will provide expert technical assistance to the jurisdictions as they implement their plans. Key learnings and resources emerging from the Innovation Fund will be shared with and beyond the justice reform field.

Expedited Prosecution



JAIL BASED PROSECUTION

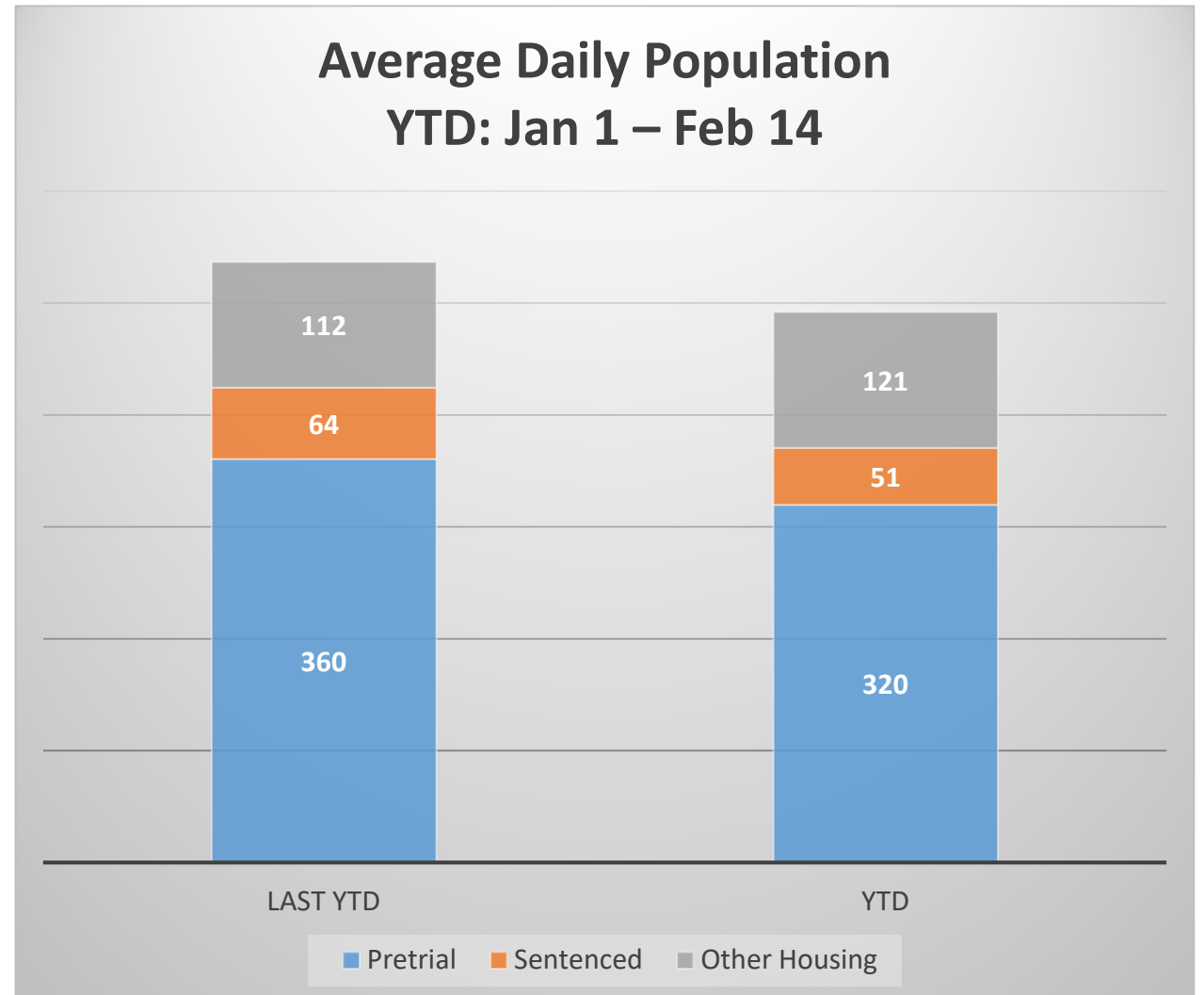
- Invested in a “fast track” Assistant District Attorney and Victim Witness Legal Assistant dedicated to focusing on reviewing jail population cases
- **87 early pleas** have been initiated, impacting **82 defendants** so far in FY2018

EXPEDITED RELEASE

- Invested in a Community Access Portal to streamline and automate court processes
- Reduces time between case disposition and jail release
- Has occurred **351 times** for **238 defendants** so far in FY2018

CURRENT JAIL NUMBERS

- Our community's efforts are making an impact, and we have more work to do
- The pretrial jail population is down 8-9% since last year
- The number of females in custody remains high: ADP 80
- There were nearly 1400 substance abuse detox protocols in 2017, up 60% from 2016



NEXT STEPS

- Criminal Justice Improvement Plan
- System mapping
- Impact data analysis
- Shared learning with other jurisdictions
- Opportunities for funding and Technical Assistance

