



HELENE UPDATE

Commission Briefing | December 2, 2024



ONE BUNCOMBE

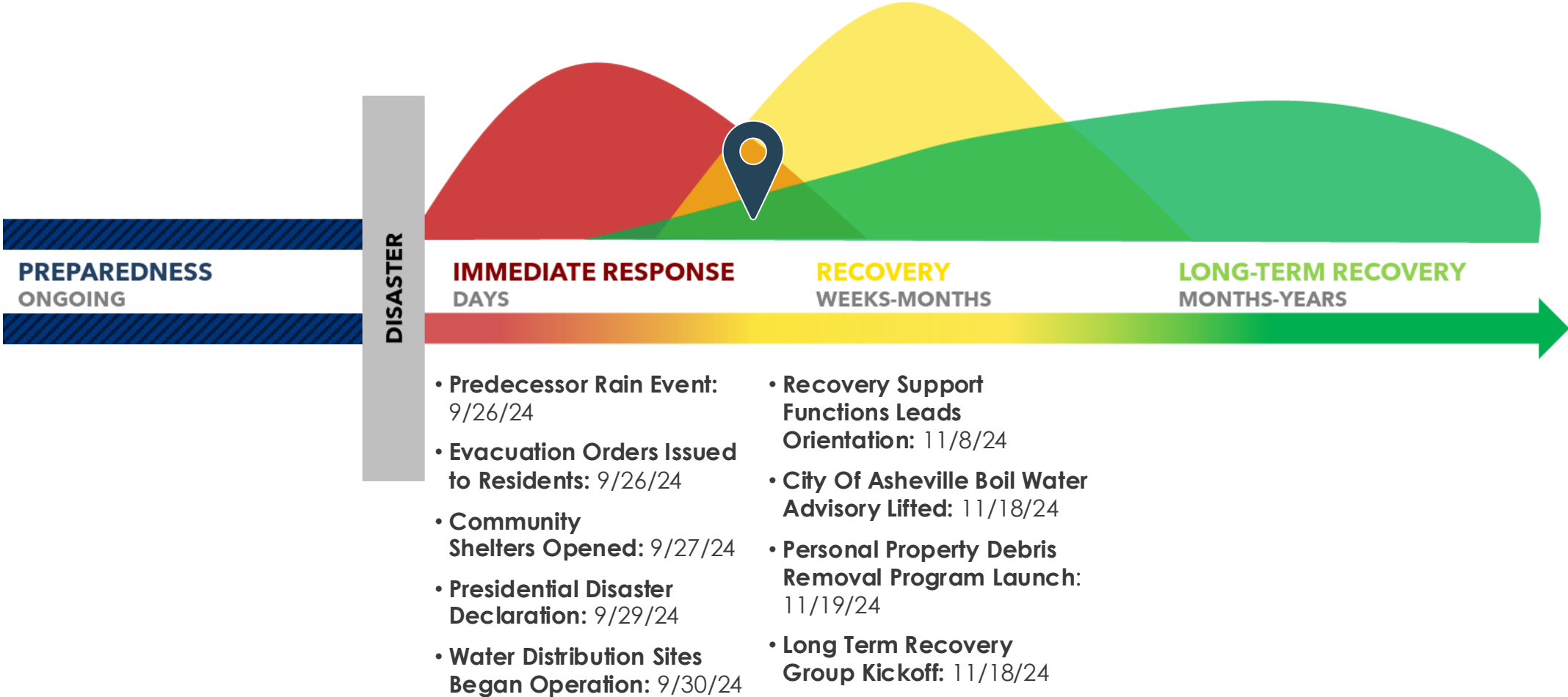


BuncombeReady.org | (828) 250-6100

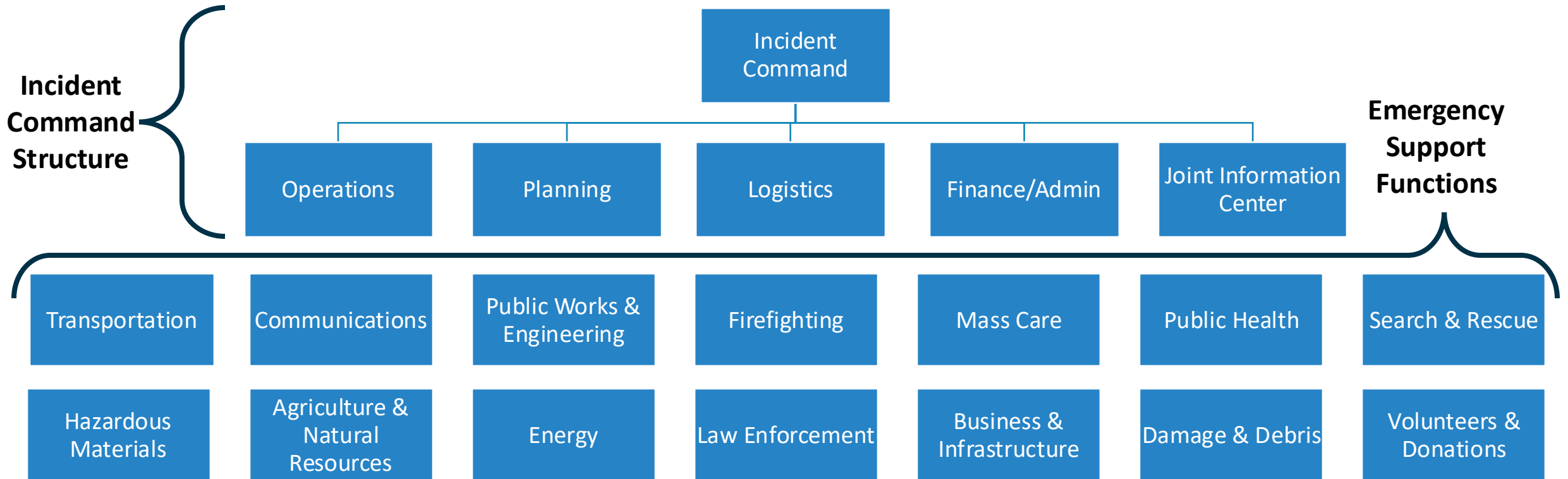
Overview



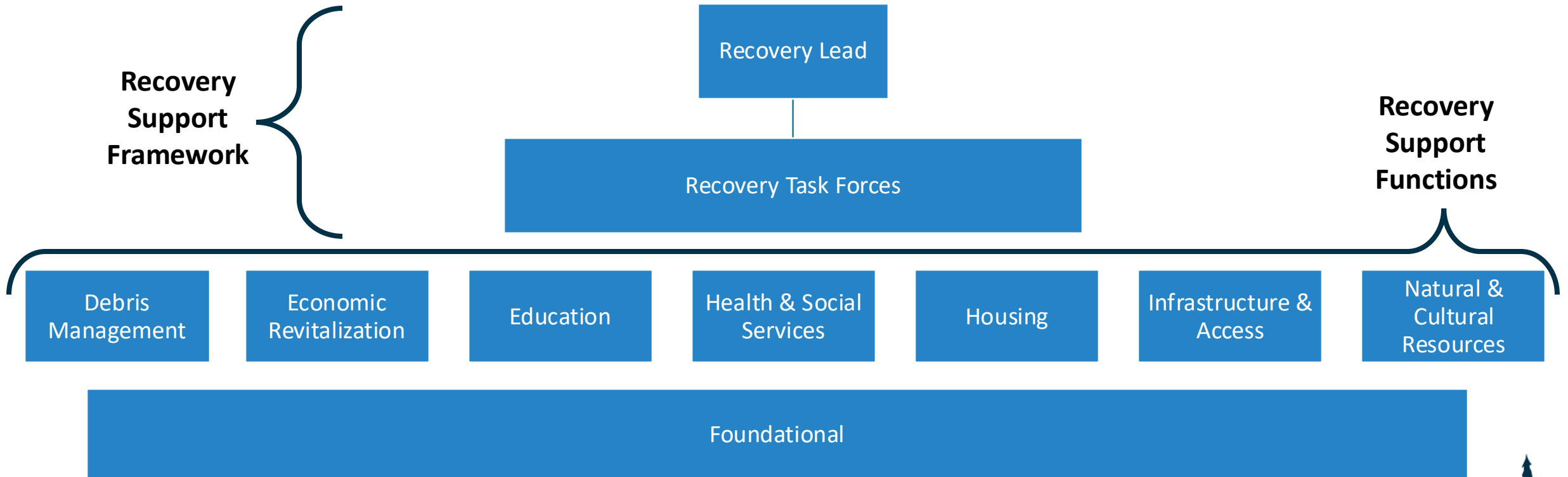
DISASTER TIMELINE



CURRENT State: Emergency Response Framework



FUTURE State: Recovery Support Framework





PROGRESS REPORT



BUNCOMBE COUNTY



CURRENT RESPONSE & RECOVERY PRIORITIES

DEBRIS REMOVAL: 10M+ cubic yards of debris estimated; 340K+ collected as of 12/2

Zone A: 1st Pass Complete: 75% | Comments: Very light debris

Zone B: 1st Pass Complete: 80% | Comments: Light debris

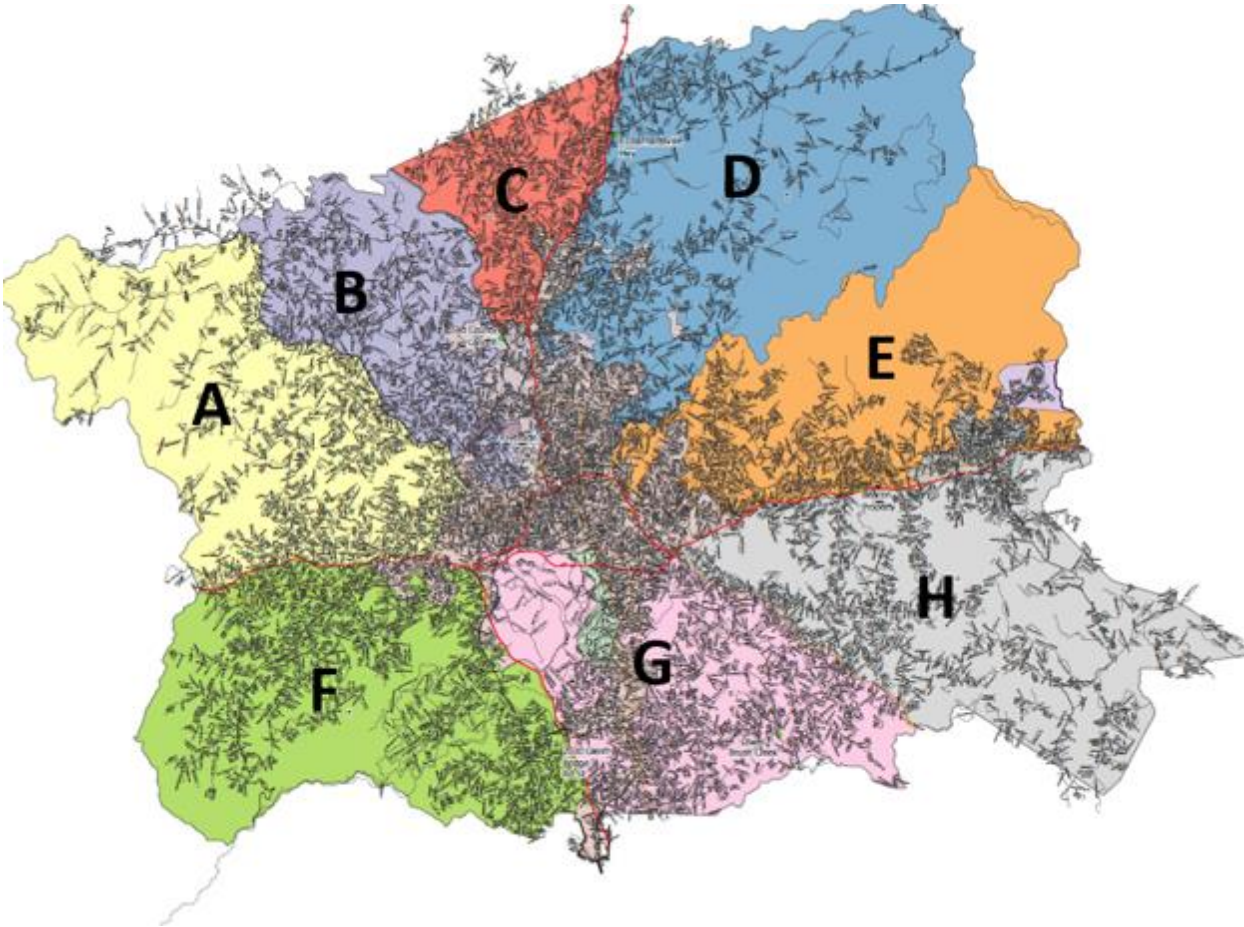
Zone C: 1st Pass Complete: 70% | Comments: Concentrated on the south end of this zone and will be finishing surveys of the north end over the Thanksgiving weekend.

Zone D: 1st Pass Complete: 65% | Comments: Web Cove, Beaverdam and Town Mountain Rd Area still have heavy debris.

Zone E: 1st Pass Complete: 75% | Concentrated on the river areas but still need to complete the survey of the northeast section of this zone.

Zone F: 1st Pass Complete: 80%, Very Light Debris

Zone G: 1st Pass Complete: 70% | Certain areas, such as Mills Gap, still require traffic control, while neighborhoods like Royal Pines in the Arden area continue to experience streets being refilled with debris. We will maintain resources in these zones until the debris is fully cleared.



CURRENT RESPONSE & RECOVERY PRIORITIES

- **POINTS OF DISTRIBUTION & COMMUNITY CARE STATIONS**

- 4 locations currently open (County-specific sites)
- Nearly 100,000 cases + 200,000+ gallons of potable water & 84,000 gallons non-potable water distributed as of 11/25
- 32,900+ showers and 29,330+ loads of laundry as of 11/25

- **PUBLIC HEALTH**

- Monitoring and awareness of outbreaks & health risks
- 1,700+ vaccines administered

- **DAMAGE ASSESSMENTS (COMMUNITY & PUBLIC)**

- 214 linear miles of floodplain impact; \$1.2+ in agriculture crop loss
- 1,150 initial damage assessments completed (out of 2,092; approx. 54%).
- 1,989 landslides have been documented



CURRENT RESPONSE & RECOVERY PRIORITIES

- **INTERNAL DAMAGE ASSESSMENT TEAM**

- Approximately 60% of County properties were impacted, ranging from minor cleanup to major damage
- Emergency remediation repairs completed as of 11/22/24:
 - 16 Structures have had Emergency Remediation Repairs
 - 14 Parks
 - 87 Vehicles
- 6 critical infrastructure properties damaged
- **Preliminary Estimates near \$7.2 M**

- **REESTABLISHING COUNTY SERVICES**

- 7 Parks partially- fully reopened (out of 13 total)
- 10 Libraries reopened (out of 12 total)
- As of 11/25 all County personnel operating PODS/CCS sites have been reassigned to “steady state” duties



CURRENT RESPONSE & RECOVERY PRIORITIES

- **TEMPORARY HOUSING SOLUTIONS**

- 1,680 households checked into transitional sheltering assistance as of 11/27 (Hotels). **TSA Extended until December 12**
- 172 households approved for direct housing assistance.
- 2 direct housing placements complete
- 10 private properties in progress for temporary units
- 3 Commercial Site with 29 pads in progress
 - 20 Haul and Install work orders issued; 5 hauled on-site; 4 w/permits requested
- **County continues to work closely with FEMA/state to expedite the process**
- **McDowell County – 50 pads available in Old Fort; 37 are ready for occupancy**

- **RENTAL ASSISTANCE AVAILABLE**

- FEMA Rental Assistance Program - for uninhabitable homes
- Re-allocation of \$1.5 million in ARPA Funds for Helene Relief programs, to include rental assistance



COMMUNITY-CENTERED RESPONSE

- **FINANCIAL TRANSPARENCY DASHBOARD**

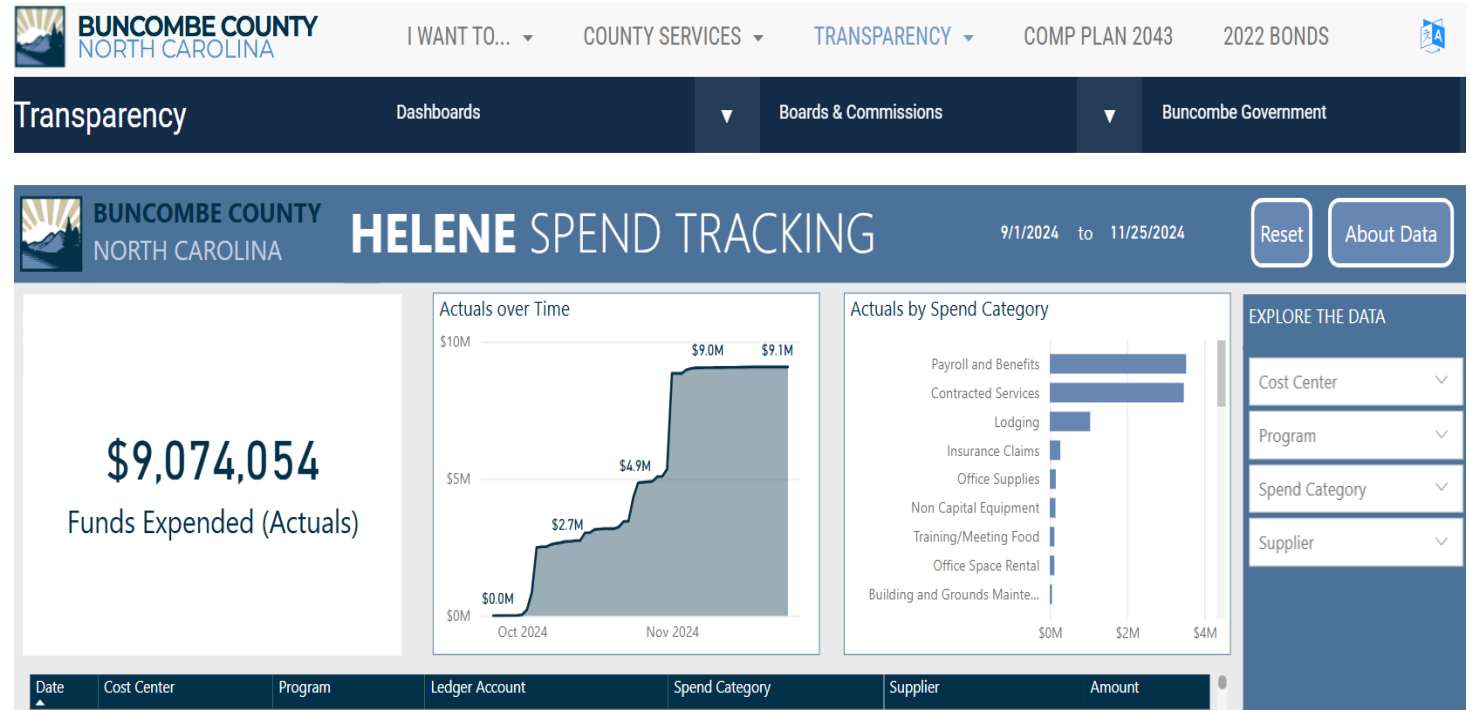
- buncombecounty.org/transparency

- **LONG TERM RECOVERY GROUP**

- Collaborative group of community organizations helping individuals and families recover

- **DAILY COMMUNITY BRIEFINGS**

- Monday-Friday, 11:00 am on Facebook Live



COUNTY SUPPORTED RESOURCES



- **COMMUNITY NAVIGATION** available at various locations and mobile throughout county
- **COMMUNITY RELIEF PROGRAMS**
 - Mountain Bizworks' Rebuilding Together Grant Application closed on 11/27 and received 837 applications from small businesses.
 - Grace Covenant has around 50 applications in process for relief funds
 - Buncombe County Economic Services application for household assistance grants will open on Thursday December 5th



HAZARD MITIGATION GRANT PROGRAM

In-Person Applications

Structure Elevation

40

Property Buyouts

101

Online Applications

All Application Types

40

Total Applications

166

Data through 11/14/2024



BUNCOMBE COUNTY



TRANSITION FROM EMERGENCY RESPONSE TO RECOVERY SUPPORT

RECOVERY SUPPORT ACTIVITIES

- Convene RSF Task Forces
- Complete an initial recovery planning process.
- Identify achievable, tangible community-based recovery actions and activities
- Develop strategies to rebuild and improve resiliency to future disaster risks
- Coordinate planning efforts with community and regional partners.

RECOVERY SUPPORT FUNCTIONS (RSFs)

- Debris Management
- Economic Revitalization
- Education
- Health & Social Services
- Housing
- Infrastructure & Access
- Natural & Cultural Resources
- Foundational

IMMEDIATE PRIORITIES

- RSF Task Force development
- Current state needs identification
- Short-term action planning (Dec-Feb)



Debris Management

FOCUS: Debris removal, including finding solutions for debris removal on private roads and bridges, evaluating hazardous materials considerations for debris removal and exploring sustainable re-use of debris

LEADS: Solid Waste Department

PARTNERS: Army Corps of Engineers; Ash Britt; Equity; FEMA; Municipalities; NC Dept of Environmental Quality; Solid Waste; Tetra Tech

STATUS: Task Force formed, Meets weekly with task-specific meetings in between

CURRENT EFFORTS:

- Public property collection (parks, schools)
- Private property debris removal applications

EMERGING PRIORITIES:

- Disposal of debris material
- Waterways
- Landslide material & vehicles



Economic Revitalization

FOCUS: Stimulating economic recovery, supporting local businesses, and ensuring the long-term economic stability and prosperity of the area

LEADS: Economic Development Program Manager; Strategic Partnerships

PARTNERS: Asheville Area Chamber of Commerce, Asheville Independent Restaurant Association, Brewers Alliance, City of Asheville, Explore Asheville, Economic Development Administration, FEMA, Land of Sky Regional Council, Small Business Administration

STATUS: Task Force grew out of existing Business Response Workgroup (former COVID focus)

CURRENT EFFORTS:

- Application now open for financial relief for small businesses
- Reopening, rehiring, business promotion

EMERGING PRIORITIES:

- Outreach campaigns
- Rental assistance relief through Economic Services



Education

FOCUS: Focused on successful recovery and increased resiliency for education institutions & systems, including childcare and early education, primary and secondary schools, and the community college

LEADS: Office of Strategy & Innovation; Strategic Partnerships; Equity and Human Rights Office; Justice Services Department

PARTNERS: Asheville & Buncombe Schools; Buncombe Partnership for Children; Charter Schools; FEMA; NC DCDEE, NC Department of Public Instruction; Health & Human Services

STATUS: Designing Task Force(s) and Subcommittees; Setting meeting cadence; prioritizing needs

CURRENT EFFORTS:

- Water coordination, testing & restoration
- Debris management & temporary repairs
- School enrollment & attendance

EMERGING PRIORITIES:

- Mental health & trauma response
- Access to financial assistance
- Development of sustainability plans



Health & Social Services

FOCUS: Focused on ensuring the health and well-being of residents - includes addressing medical, public health, behavioral health, and environmental concerns, as well as ensuring social service needs are met and all essential services are rebuilt post-disaster

LEADS: Public Health Department; Social Work Department

PARTNERS: FEMA, Red Cross, Western Carolina Ministries, Vaya Health

STATUS: Transitioning from shelter, POD & CCS operations; Establishing scope

CURRENT EFFORTS:

- Shelter transition
- Disaster case management
- Feeding workgroup

EMERGING PRIORITIES:

- Task Force development
- Needs assessment
- Behavioral Health support



Housing

FOCUS: Identifying and understanding total storm impact to housing stock; temporary housing solutions; and home repair, rebuilding, and replacement. Includes coordinating the delivery of resources to implement safe, secure, sanitary housing solutions that effectively support the needs of the whole community.

LEADS: Community Development Division

PARTNERS: FEMA; NC Emergency Management; Municipalities; Nonprofit Partners; For Profit Partners; and Tetra Tech

STATUS: Task Force Formed; Meets weekly with workgroup meetings scheduled in between

CURRENT EFFORTS:

- Temporary Housing Units
- Short- and Long-term Rental Housing Options
- Rental Assistance
- Home Repair

EMERGING PRIORITIES:

- Affordable Housing Development
- Housing instability associated with Helene impacts on employment and lost wages



Infrastructure & Access

FOCUS: Public infrastructure systems, facilities, properties, and accessibility, including transportation and communication networks to support resilient recovery and redevelopment. This includes completing comprehensive damage assessments and analyzing future hazards such as floods and landslides.

LEADS: Office of Strategy & Innovation

PARTNERS: FEMA; Tetra Tech; NC Emergency Management; Planning, Permits/Inspections

STATUS: Establishing scope and task groups

CURRENT EFFORTS:

- Public property damage cost assessments & prioritization
- Private roads and bridges safety inspections
- Damage assessments for significantly impacted properties in the floodplain
- Permitting & plan reviews

EMERGING PRIORITIES:

- Permanent repairs
- Emergency slope stabilization
- Outreach to households/individuals impacted



Natural & Cultural Resources

FOCUS: Coordinating capabilities to maintain, conserve, renew, and rehabilitate natural resources in accordance with the post-disaster community's objectives while adhering to relevant environmental and historical preservation laws.

LEADS: Agriculture & Land Resources

PARTNERS: Parks & Recreation, Libraries, City of Asheville & municipalities, North Carolina & FEMA RSF Leads, Arts AVL, Council on the Arts, Land of Sky, USDA

STATUS: Establishing scope and task force

CURRENT EFFORTS:

- Assessing viability of existing watershed protection & other grant projects in light of Helene
- Damage assessments & cost estimates

EMERGING PRIORITIES:

- Permanent repairs to recreational assets
- Emergency Watershed Protection



Foundational

FOCUS: Coordinating the resources needed for an effective recovery for Buncombe County Government – including communications, funding, facilities, fleet, human capital and technology

PARTICIPANTS: County management & internal service departments: Budget; CAPE; Equity; Finance; Human Resources; IT; Legal & Risk; Strategic Partnerships; Strategy & Innovation

STATUS: Establishing scope and task groups

CURRENT EFFORTS:

- FEMA Public Assistance exploratory call
- Insurance claims for property damage
- Data sharing agreement with NCEM & FEMA
- Transparency dashboard
buncombecounty.org/transparency

EMERGING PRIORITIES:

- Budget & business planning





THANK YOU

Discussion & Questions



BUNCOMBE COUNTY



Resources

Community Care Stations starting 12/3/24:

- Bethel United Methodist on Riceville Rd
- Owen Pool
- Morgan Hill Baptist Church
- Ingles on Charlotte Hwy

FEMA Disaster Recovery Centers:

- **Asheville Mall – 3 S. Tunnel Rd. Asheville, NC 28805**
 - Open 8 a.m.-6 p.m. Monday, Dec. 2- Saturday, Dec.
- **Barnardsville Fire Department Station 15 - 100 Dillingham Rd., Barnardsville NC, 28709**
 - Open 8 a.m.-6 p.m. Monday, Dec. 2- Thursday, Dec. 5
- **Fairview Public Library - 1 Taylor Rd. Fairview NC, 28730**
 - Open 8 a.m.-6 p.m. Friday, Dec. 6-, 9 a.m. to 2 p.m. Saturday, Dec. 7, and 8 a.m.-6 p.m. Monday-Tuesday, Dec. 9-10.
- **Weaverville Town Hall - 30 Main St. Weaverville NC, 28787**
 - Open 8a.m.-6 p.m. Wednesday, Dec. 11- Friday, Dec. 13



Resources

FEMA Disaster Assistance: www.disasterassistance.gov

Eblen Charities: 23 Hamilton St 28801 or eblencharities.org is accepting requests for rent, mortgage, utility (electric, natural gas, water), eyeglasses, medication and gasoline assistance.

Goodwill Industries: 1616 Patton Avenue, Asheville offering Good Neighbor vouchers for survivors for clothing and household goods. These vouchers can be used at any Goodwill Industries of Northwest North Carolina retail store and don't expire.

Pisgah Legal Services: offers free legal assistance with FEMA and Disaster Benefits applications, housing and evictions issues, consumer protections, and domestic violence and custody issues. You can apply online for services at www.pisgahlegal.org or call 828-253-0406

Hazard Mitigation Grant Program: Offering assistance to property owners for various mitigation strategies, including structure elevation, structural reinforcement, strengthening buildings to withstand natural disasters, and property buyouts. Visit <https://www.ncdps.gov/our-organization/emergency-management/hazard-mitigation/about-hazard-mitigation> to apply and learn more. <https://www.ncdps.gov/our-organization/emergency-management/hazard-mitigation/about-hazard-mitigation>



CURRENT RESPONSE & RECOVERY PRIORITIES

- **POINTS OF DISTRIBUTION & COMMUNITY CARE STATIONS**

- 8 locations currently open (County-specific sites)
- Nearly 100,000 cases + 200,000+ gallons of potable water & 84,000 gallons non-potable water distributed as of 11/18
- 29,177+ showers and 25,850+ loads of laundry as of 11/18

- **FOOD ASSISTANCE**

- 16,950 households approved for DSNAP for \$10+ million in benefits

- **PUBLIC HEALTH**

- Monitoring and awareness of outbreaks & health risks
- 1,700+ vaccines administered by 11/7

- **DEBRIS REMOVAL**

- 10M+ cubic yards of debris estimated; 174K collected as of 11/18

- **TEMPORARY HOUSING SOLUTIONS (FEMA)**

- 1,664 households checked into transitional sheltering assistance as of 11/13
- 149 households approved for direct housing assistance.
- 4 direct housing unit placed on private sites

- **DAMAGE ASSESSMENTS (COMMUNITY & PUBLIC)**

- 214 linear miles of floodplain impact; \$1.2+ in agriculture crop loss
- 1,150 initial damage assessments completed (out of 2,092; approx. 54%). These include damage points within the City of Asheville