



HELENE UPDATE

Board of Commissioners | January 7, 2025



- **Housing** – Avril Pinder
- **Private Roads & Bridges** – Avril Pinder
- **Debris Removal** – Avril Pinder
- **Individual & Small Business Assistance** – EB Odderstol
- **Emergency Watershed Protection** – Ariel Zijp
- **Floodplain Regulations** – Nathan Pennington
- **Hazard Mitigation Grant Program** – Steve McGugan



HOUSING

- FEMA Transitional Sheltering Assistance (TSA)
 - Households checked into TSA: 1,371
 - Households in TSA approved for TSA through January 24: 529
 - Households in TSA identified ineligible & checking out January 11: 842
- Community Navigation, Disaster Case Management, & Outreach
 - County continues providing outreach to TSA Households
 - TetraTech Community Navigators continue to provide support in TSA Hotels
 - State supported Disaster Case Managers are active in the Disaster Recovery Center
- FEMA Direct Housing
 - 21 households currently licensed in on private sites and commercial site pads
 - 5 households currently licensed in direct leasing



PRIVATE ROADS & BRIDGES

Overview

- 300+ bridges assessed for emergency access by Fire Marshal, 80%+ were damaged or destroyed
- New self reported locations occurring weekly

Next steps

- Continue to identify damaged private roads from flooding and landslides
- Developing outreach campaign for impacted households
- Preparing prioritization Rubric for destroyed and damaged bridges and roads

Community Help

- Gov. Stein Executive Order 2 – Timely Repairing Private Roads and Bridges



DEBRIS REMOVAL

Public Right of Way:

- Ashbritt is assessing 1st pass completion in zones A, B, C & F, currently at 99% complete. Swannanoa and Barnardsville at 90% completion of 1st pass.

Title Property:

- Title property RFP is complete, with several responsive bidders. Currently working through contract negotiations with all responsive bidders.

Waterway Debris Removal:

- Waterway debris removal has been approved by FEMA and tasked to USACE. USACE has assessment teams out determining eligibility and scope of work for a contractor.



PRIVATE PROPERTY DEBRIS REMOVAL (PPDR)

- Approximately 2,000 PPDR applications received as of today. (1/7/25)
- Direct contact with property owners and residents are underway for those with destroyed and/or severely damaged property who haven't started clean up.
- In-person, virtual, and call center intake options.



Questions?



SMALL BUSINESS ASSISTANCE

- On November 19th, 2024, the Buncombe County Board of Commissioners awarded \$1.597M to Mountain BizWorks for their "Rebuilding Together" Helene Relief small business grant program
 - Funds were reallocated ARPA dollars and awarded following an RFP
- 276 businesses served by the total \$3.69 million Rebuilding Together grant program
- 137 awards made with Buncombe County funds
 - Average grant size \$11,441
 - 39 Minority-owned businesses (28.5%)
 - 83 Women-owned businesses (60.6%)
 - 8 Veteran-Owned businesses (5.8%)



INDIVIDUAL ASSISTANCE

- On November 1st, 2024, the Buncombe County Board of Commissioners voted to reallocate \$1.597M for household assistance
 - \$300K for Grace Covenant Helene Relief Program
 - \$1.297M for Economic Services' Household Assistance Program
- Grace Covenant
 - First data report due January 15
- Economic Services
 - 5,826 of applications received
 - 51 applications approved, for \$187,193.76 in total grant dollars
 - 101 applications pending



INDIVIDUAL ASSISTANCE

- Request
 - **City of Asheville has requested that Buncombe County accept & manage \$624K in CDBG-DDRF funds**
 - DDRF = Declared Disaster Recovery Funds, a supplemental resource
 - Rental assistance for City of Asheville Households with AMI at 80% or less
 - CDBG-DDRF would fund eligible applications from the Household Assistance Program
 - Interlocal agreement would include administration fee: 10%
- Next Steps
 - Buncombe County and City of Asheville staff working on an interlocal agreement
 - City Council will consider it at the January 14th, 2025 meeting
 - January 21st, 2025 staff will bring to regular meeting for Board of Commissioner consideration



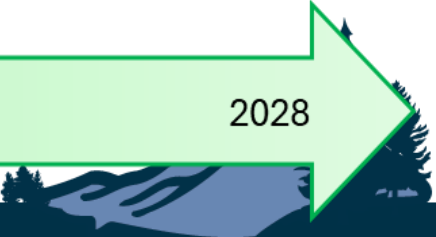
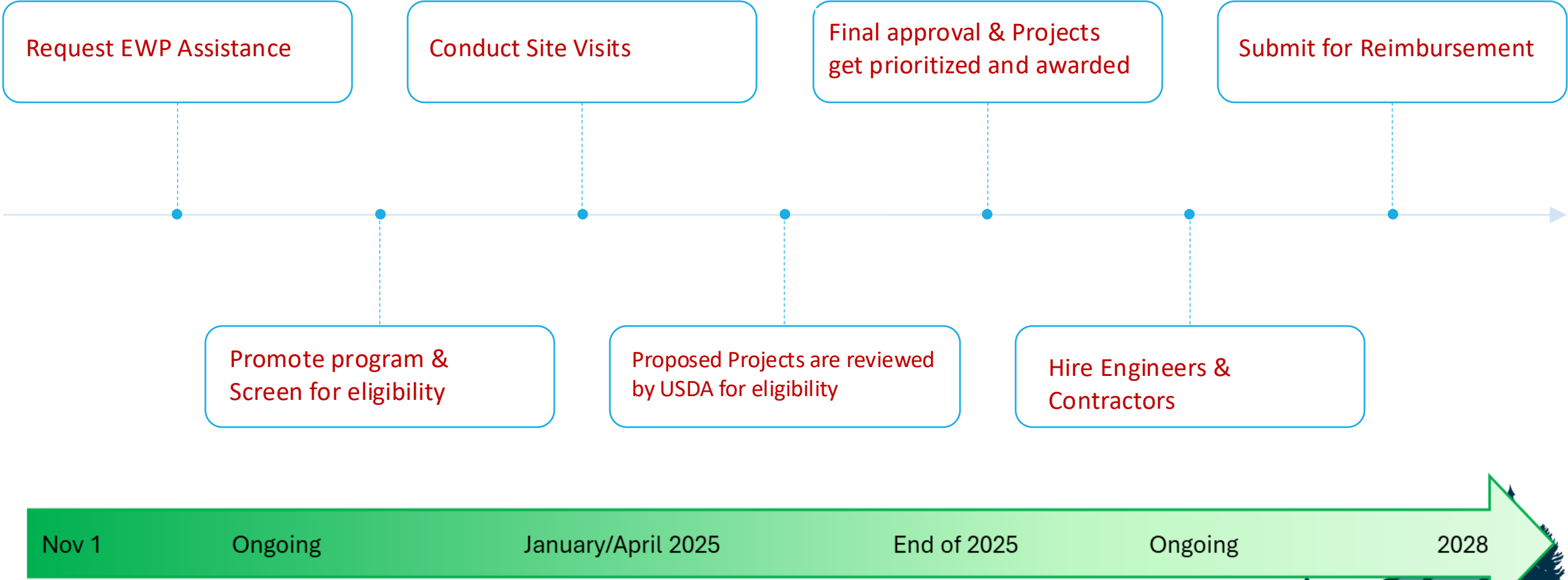
Questions?



EMERGENCY WATERSHED PROTECTION



EWP PROCESS & TIMELINE



EMERGENCY WATERSHED PROTECTION



Tropical Storm Fred



Before



After



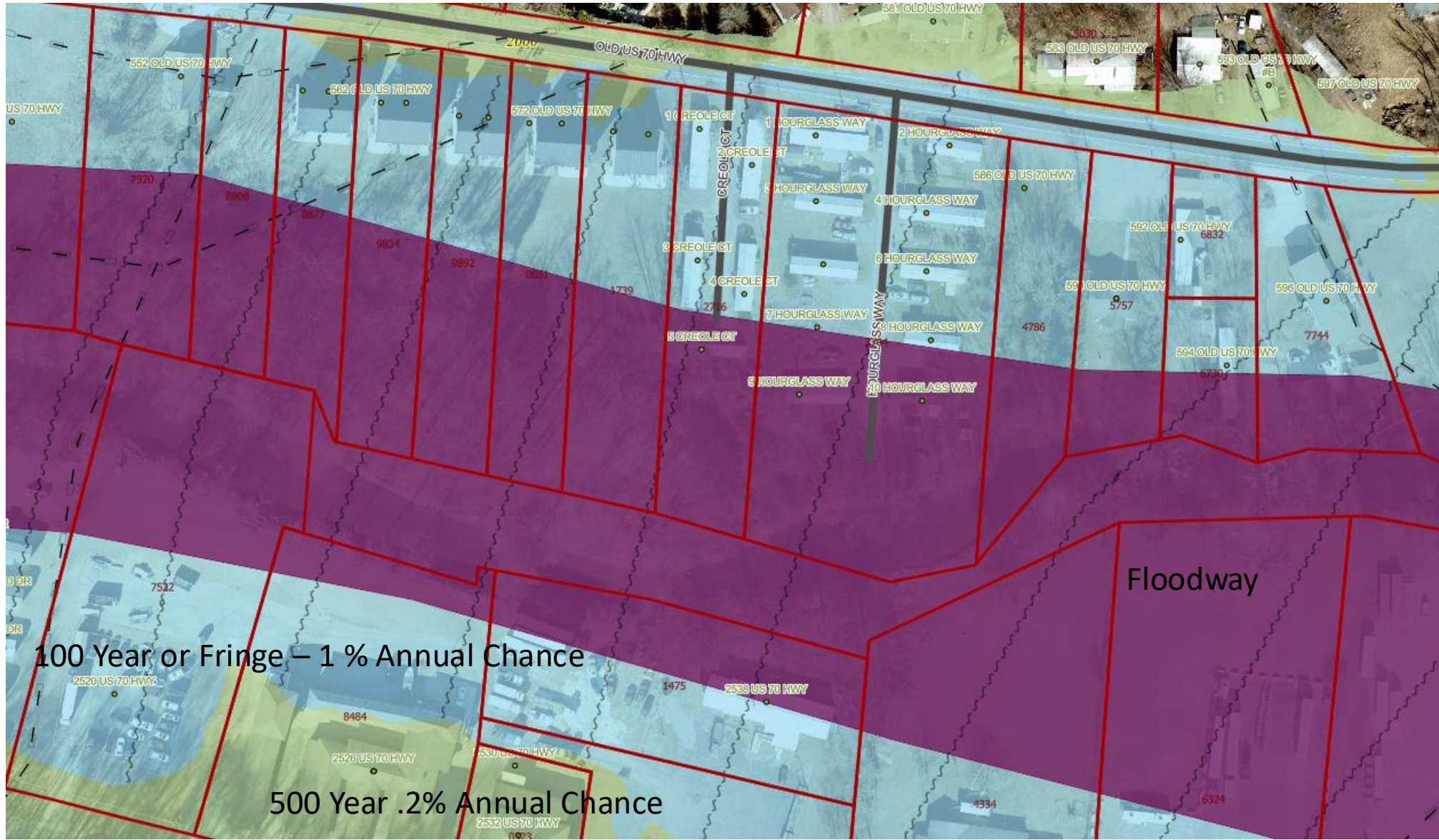
Questions?



FLOODPLAIN MANAGEMENT

- ✓ Membership in National Flood Insurance Program since 1980
- ✓ NC – Cooperating Technical Partner (North Carolina Floodplain Mapping Program since 2000). As a CTS, NC assumes primary ownership and responsibility of the Flood Insurance Rate Maps.
- ✓ Maps are based on the Flood Insurance Study or FIS. Current maps adopted in 2010. The NC Floodplain Mapping Program is securing funding to collect LIDAR data for Western NC this leaf-off season. New maps are likely 3-4 years away.
- ✓ Detailed and Limited Detail Study Areas
- ✓ No two properties are the same and no two flood zones are the same.

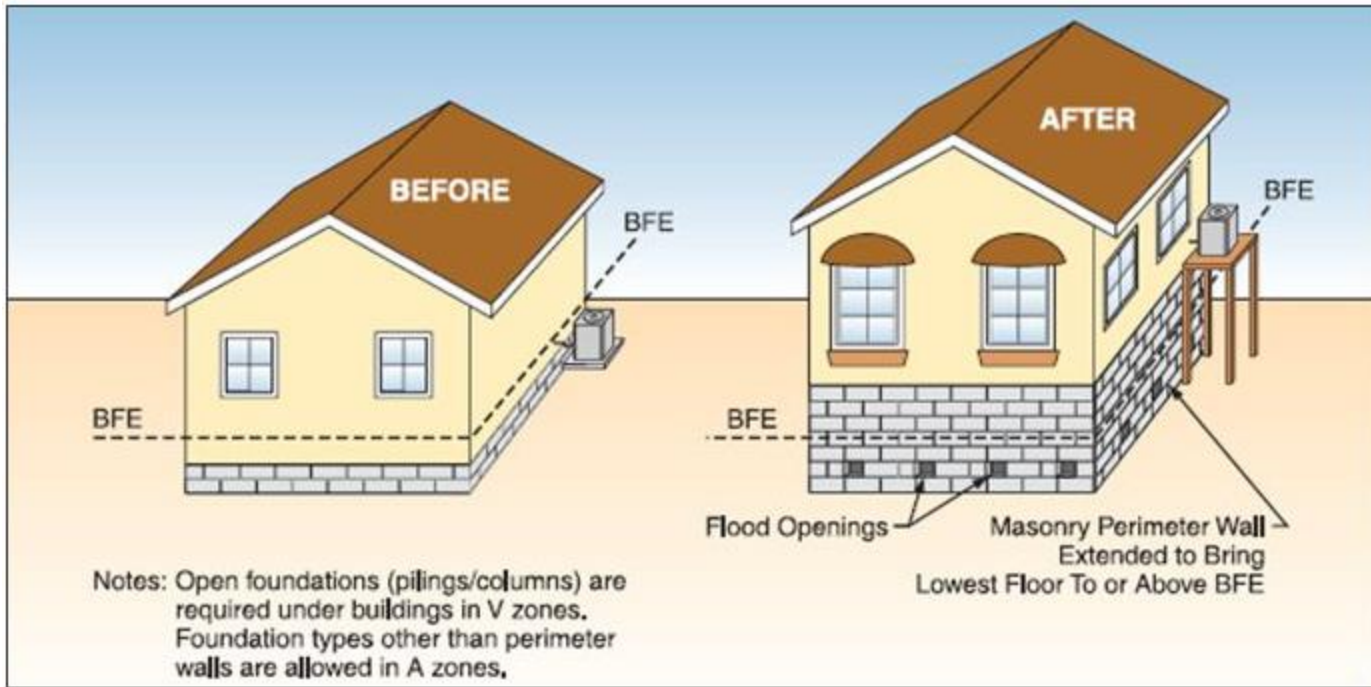




Flood Basics

- Special Flood Hazard Area (SFHA)
- Floodway
- 100 Year
- 500 Year





Scenario #1 (Pre-FIRM)

- 1940 construction
- Slab on grade

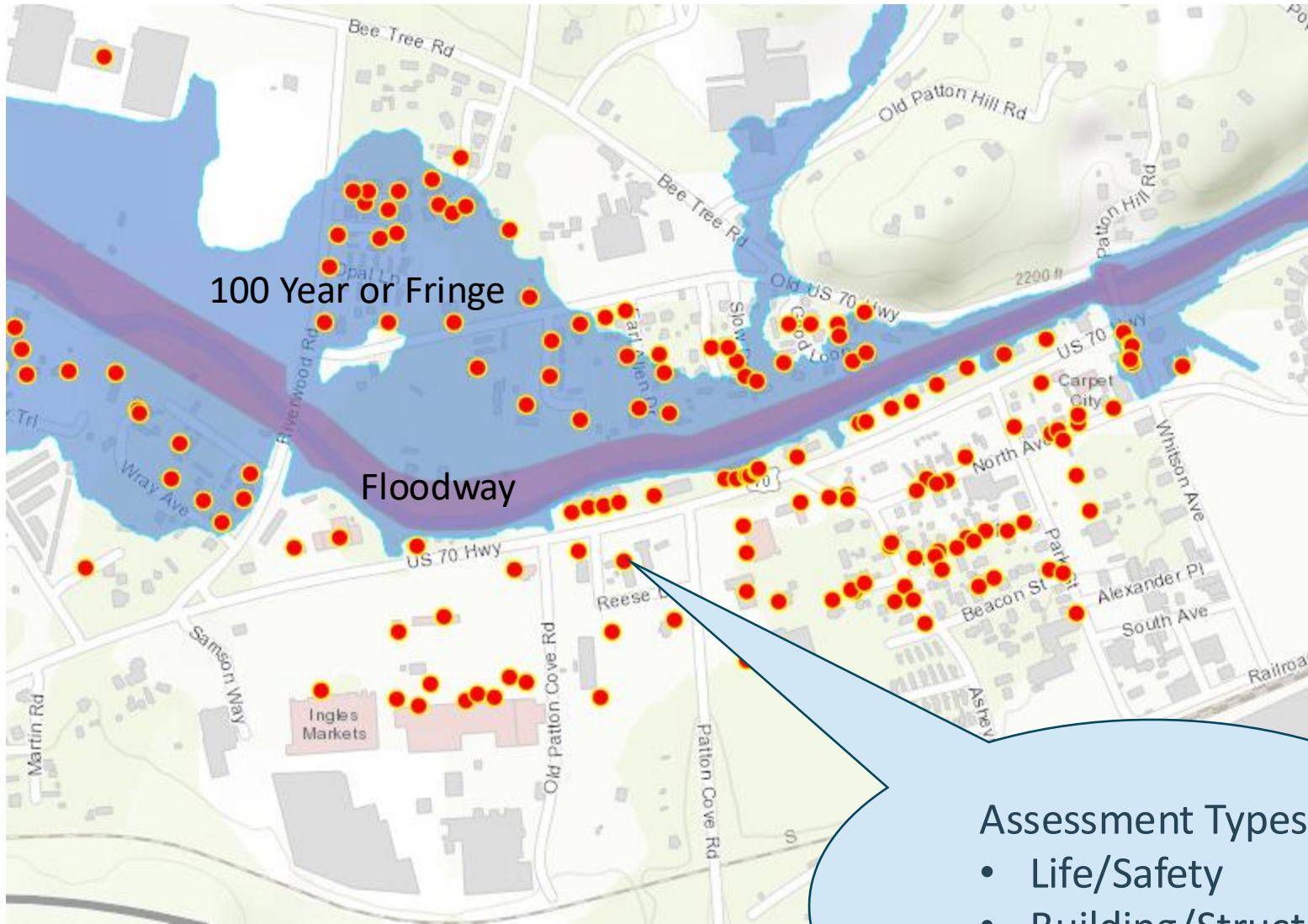
Scenario #2 (Post-FIRM)

- 2020 construction
- Engineered foundation with crawl space and flood vents

Flood Basics Continued

- Are permits required?
- Base Flood Elevation (BFE)
- Freeboard
- Pre-FIRM (Flood Insurance Rate Map) Structure
- Substantial Damage
- Substantial Improvement
- Post-FIRM Structure
- Commercial (wet/dry floodproofing)





After Flood Actions

- Damage Assessments – ULTRA IMPORTANT
- Colored Placards
- County Contractor – Tetra Tech
- Substantial Damage/Improvement
- Inherent Risk in SFHA
- Reconstruction/New Construction Options in the SFHA

Assessment Types

- Life/Safety
- Building/Structural
- SFHA – Substantial Damage



HIGHER STANDARDS

- ✓ New Mapping Cycle – New Model Ordinance (there will be changes including a recommendation to raise freeboard standard)
- ✓ Community Rating System (CRS)
- ✓ Flood Insurance Discount
- ✓ Consistent with Hazard Mitigation Plan and Comprehensive Plan



SHOULD I GET FLOOD INSURANCE?

- ✓ In a mapped Special Flood Hazard Area (SFHA)
- ✓ Adjacent to a water course (i.e. stream, tributary, river)
- ✓ Outside of mapped SFHA's but near significant impervious area, roads, bridges, developed areas.
- ✓ High water table, hydrostatic pressure
- ✓ When in doubt – YES!
- ✓ ICC Coverage



FURTHER CONSIDERATIONS

- ✓ Alteration of Water Courses (Main, Stems, Tributaries)
- ✓ Scouring and Loss of Property
- ✓ Streambank Restoration
- ✓ Army Corp of Engineers, NCDEQ



PLANNING & DEVELOPMENT

46 Valley Street

- ✓ Verify what you hear with subject matter experts, floodplain managers are available.
- ✓ helenefloodpermits@buncombecounty.org (flood specific) or planninginfo@buncombecounty.org (all other inquiries)



Questions?





Emergency Management
NC DEPARTMENT OF PUBLIC SAFETY

Hazard Mitigation

Steve McGugan
Assistant Director – HM
State Hazard Mitigation Officer (SHMO)





What is the Hazard Mitigation Grant Program (HMGP)?

- HMGP is 1 of 4 Hazard Mitigation Assistance (HMA) grants provided by FEMA, focused at providing **post-disaster assistance** while simultaneously reducing risks to individuals and property from future disasters.
 - HMGP is only available after a Presidential Declaration
 - HMGP focus is ensuring effective Governmental actions incorporate critical mitigation measures to reduce risk during post-disaster reconstruction
 - Focused at breaking the cycle of damage, reconstruction and repeated damages
 - Specific Focus Areas:
 - Community-wide risk reduction projects
 - Improving resilience of key infrastructure and resource life-lines
 - Encouraging conservation of the floodplain
 - Increasing future mitigation planning



Hazard Mitigation Assistance Program and Policy Guide

Hazard Mitigation Grant Program, Hazard Mitigation Grant Program Post Fire, Building Resilient Infrastructure and Communities, and Flood Mitigation Assistance

March 23, 2023

Federal Enterprise Architecture (FEA) Number: FP-206-21-0001



FEMA

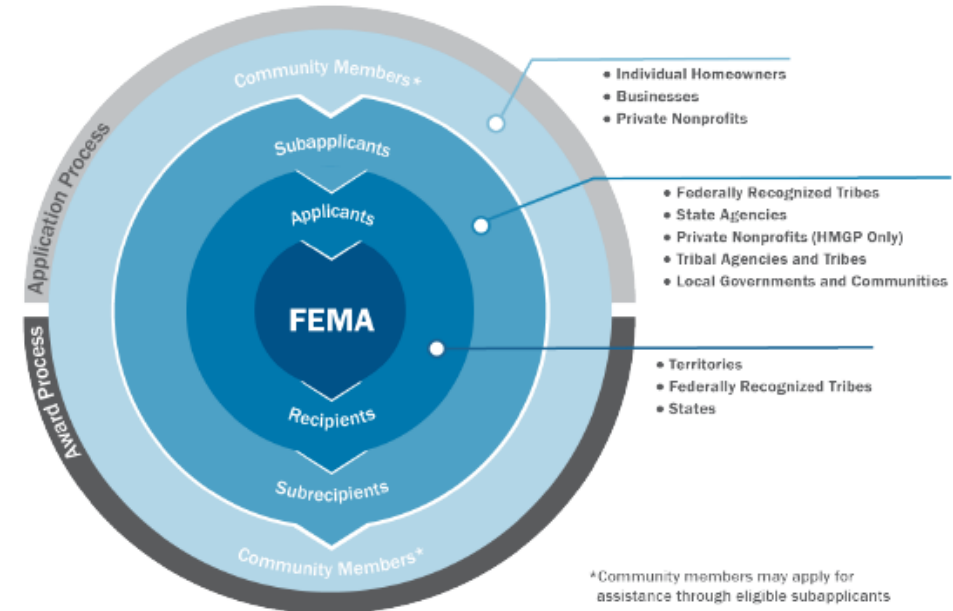


Eligibility for HMGP

- Key to Note: It is the role of states to apply for HMGP funding and local governments (acting as sub-applicants) to apply to their state for inclusion in FEMA HMA funding.

- Eligible Sub-Applicants:

- State agencies.
- Local governments.
- Federally recognized tribal governments.
- Private nonprofit organizations
 - the private nonprofit must own and operate a private nonprofit facility
 - A ruling letter from the IRS, in effect as of the date of the declaration for HMGP, being tax exempt under Sections 501(c), (d) and (e) OR documentation from the state substantiating it is a nonrevenue producing nonprofit, organized or doing business under state law
- Must provide one of the services below:
 - A facility that provides a critical service, defined as education, utility, irrigation, emergency, medical, or custodial care
 - A facility that provides a noncritical but essential government service and provides those services to the general public
 - Certain types of facilities, such as senior centers, that restrict access in a manner clearly related to the nature of the facility and are still considered to provide essential government services to the general public.





HMGP Project Types and Templated Time

- The HMGP program possess the capability to carry out a multitude of projects, as listed
- The HMGP program timeline is NOT fast, due to approvals and size/scope/number of the projects
- General HMGP Timeline is:
 - Application period (for State’s applications) – 15 months
 - Hurricane Helene application period closes 29 Dec 25
 - Period of Performance (POP)– 48 months from close of application period
 - Hurricane Helene POP is 28 Dec 29, extendable up to 36 months
- Keep in mind, the bigger the project(s) (i.e. the more homes to be completed, the longer residents may wait to see actual work performed on their home)

Property Acquisition
Structure Elevation
Mitigation Reconstruction
Localized Flood Risk Reduction
Non-Localized Flood Risk Reduction
Stabilization
Dry Floodproofing Non-Residential Building
Tsunami Vertical Evacuation
Safe Room
Wildfire Mitigation
Retrofit
Secondary Power Source
Warning System (excluding earthquake early warning system)
Earthquake Early Warning System
Aquifer Recharge, Storage and Recovery
Innovative Mitigation Project**





NCEM State Centric Program

- Intended as full-service support to all State sub-applicants; Sub-Applicants choice to Opt-In or self-perform the awarded application.
- NCEM HM assists in preparing sub-applicant applications to FEMA – requires Chairman of Board of Commissioners or City Council or their designated agent (DA) to sign the final application
- NCEM HM contracts and oversees approved applications, expending State funds and pulling down Federal reimbursement (no local funds committed)
- NCEM HM closes out approved awards with FEMA and provides notification back to jurisdiction project closed
- NCEM HM acts on behalf of the county to process/get approved any Land Leases of acquired properties



STATE CENTRIC PLAN

As of 21 May 2021

PURPOSE

To Provide the State's Framework and Guidance in managing all Disaster Hazard Mitigation Grants from the Federal Emergency Management Agency





Questions



End of Presentation

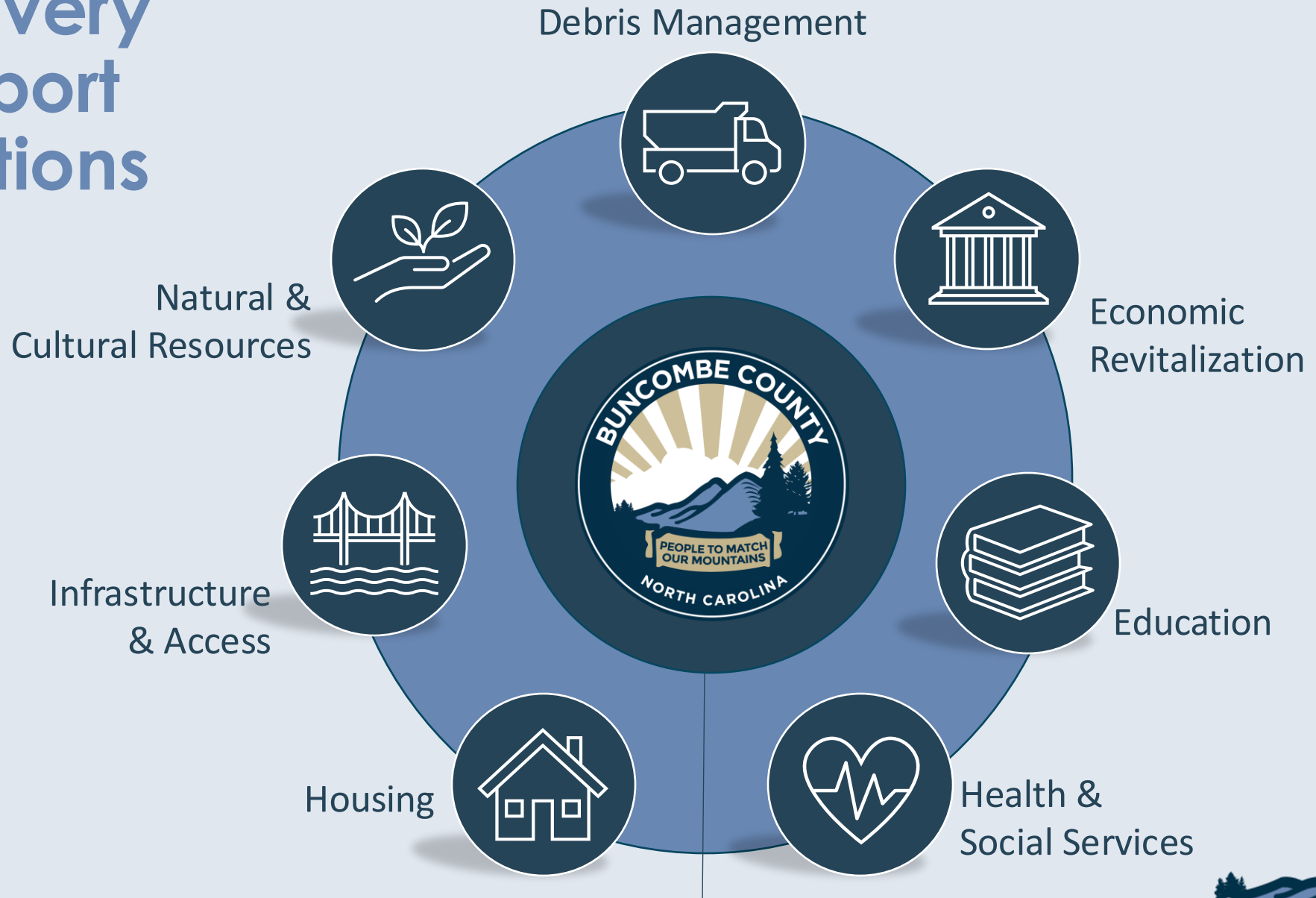


APPENDIX – DATA UPDATES

Reference Data by Recovery Support Function



Recovery Support Functions



DEBRIS MANAGEMENT



Focused on storm debris, including solutions for debris removal on public and private property and waterways, managing specialized debris types, evaluating hazardous materials considerations, coordinating disposal, and exploring sustainable re-use of debris.



DEBRIS MANAGEMENT

- Cubic yards of debris collected: 664,106 (20%+ increase over last update)
- Tons of mud, silt and soil collected: 44,824 (300%+ increase over last update)
- PPDR applications received: 1,938 (40%+ increase over last update)
- PPDR applications ready for site inspection: 267 (100%+ increase over last update)
- PPDR applications delivered to FEMA: 238 (40%+ increase over last update)
- PPDR inspections complete: 561 (400%+ increase over last update)
- % of applications received on-line: 60%
- % of applications received in-person: 40%
- % of applications requesting debris removal only: 91%
- % of applications requesting debris and demolition: 8%
- % of applications requesting demolition only: 1%



ECONOMIC REVITALIZATION



Focused on stimulating economic recovery, supporting local businesses, responding to workforce needs, and ensuring the long-term economic stability and prosperity of the area with a focus on revitalization of critical economic sectors



ECONOMIC REVITALIZATION

- Asheville-Buncombe "Rebuilding Together" Business Grant www.mountainbizworks.org/helene/fund/
 - 843 applications received totaling more than \$18M
 - Total Awards (Buncombe County, City of Asheville, and Chamber)
 - 276 small businesses awarded grants
 - \$3.69 million in grant funding
 - 2,935 FTEs (Full-Time Equivalent jobs) retained
 - Buncombe County Only
 - 137 small businesses awarded grants, totaling \$1,567,480



ECONOMIC REVITALIZATION

Unemployment Estimates: Revised October 2024 and November 2024

	Reported Oct 2024	Revised Oct 2024	Reported Nov 2024*
Buncombe County	8.8%	10.4%	7.2%
Asheville Metro**	7.4%	8.5%	6.1%

*Next Unemployment Update will be available Tuesday January 28th, 2025 and will include November 2024 Revised and December 2024

** Asheville Metro includes Buncombe, Haywood, Henderson, and Madison counties

Helene Impact on County Unemployment Rankings November 2024

County	Labor Force*	Unemployment **	Rate	Rank
Yancey	8,480	522	6.2	96
Avery	7,897	504	6.4	97
Madison	10,328	677	6.6	98
Buncombe	147,359	10,621	7.2	99
Mitchell	6,643	591	8.9	100

*Number of people working in Buncombe County

** Number of people unemployed



EDUCATION



Focused on successful recovery and increased resiliency for students and educational institutions, including childcare/early childhood education as well as elementary and secondary education in varied educational settings



EDUCATION

- The number of homeless (unhoused) students identified under the McKinney-Vento Act in **Asheville City Schools** is currently at 218
 - At this time last year, the number was 211
- All but 4 of **Buncombe County Schools** sites have resumed normal water usage after receiving lead test results
 - 4 sites still awaiting test results



HEALTH & SOCIAL SERVICES



Focused on ensuring the health and well-being of residents with attention to the social determinants of health, including consideration of medical, behavioral, and environmental health concerns and social service recovery needs



HEALTH & SOCIAL SERVICES

- Applications for individual assistance thru Buncombe Co.: 5,100 (no change compared to last update)
- Total number of showers at Community Care Sites: 41,251 (10%+ increase over prior update)
- Total loads of laundry at Community Care Sites: 40,634 (17%+ increase over prior update)
- Number of vaccines provided at Community Care Sites: 1,022 (vaccine administration ended 12/16)
- Mass care meals provided (avg. / day): 2,000 (60% increase over prior update)
- Current individuals in emergency shelters: Shelter closed as of 13/31
- Low-income energy assistance program (LIEAP) approved households: 1,251 (no change compared to last update)
- LIEAP approved funds: \$440,700 (no change compared to last update)



HOUSING



Focused on supporting people in moving toward housing permanence through home repair, removing barriers to temporary housing units, connecting survivors to short- and long-term rental, and coordinating rental and mortgage assistance for survivor households with economic impacts



HOUSING

- Residential units destroyed: 339 (2%+ increase over prior update)
- Residential units with major damage: 633 (3%+ increase over prior update)
- Residential units with habitability repairs: 8,767 (5%+ increase over prior update)
- Total residential units damaged: 9,737 (5%+ increase over prior update)
- Households currently in TSA: 1,371 (2%+ decrease over prior update)
- Households approved for FEMA direct housing: 128 (10%- decrease from prior update)
- FEMA temporary housing units complete: 26 (60%+ increase over prior update)
- FEMA temporary housing units in-progress: 45 (20%+ increase over prior update)
- Households approved for rental assistance: 261 (50%+ increase over prior update)



INFRASTRUCTURE & ACCESS



Focused on restoring and enhancing essential public infrastructure and accessibility to private property, including comprehensive damage assessments, coordination of repairs/restoration, and mitigation of future hazards such as floods and landslides



INFRASTRUCTURE & ACCESS

- 300+ private addresses assessed for bridge damage by Fire Marshall
- 1,000+ landslides occurred in the County with 400+ damaging roads and structures
- Helene related building permit apps filed across 1,100+ unique locations (16% increase over last update)
- Helene related building inspections conducted at 700+ unique locations (32% increase over last update)
- 1,400 assessments conducted of properties in flood plain with letters of significant damage being sent
 - County standing up free surveyor program for household appealing significant damage determination



NATURAL & CULTURAL RESOURCES



Focused on the restoration and sustainable management of natural and cultural resources, including capabilities to maintain, conserve, renew, and rehabilitate resources such as parks, farmland, watersheds and streambanks in alignment with environmental and historical preservation laws



NATURAL & CULTURAL RESOURCES

- Emergency watershed protection potential applicants identified: 360 (20% increase over last update)
- 7 County parks open to the public (no change compared to prior update)
- 11 County libraries open to the public (no change compared to prior update)

