



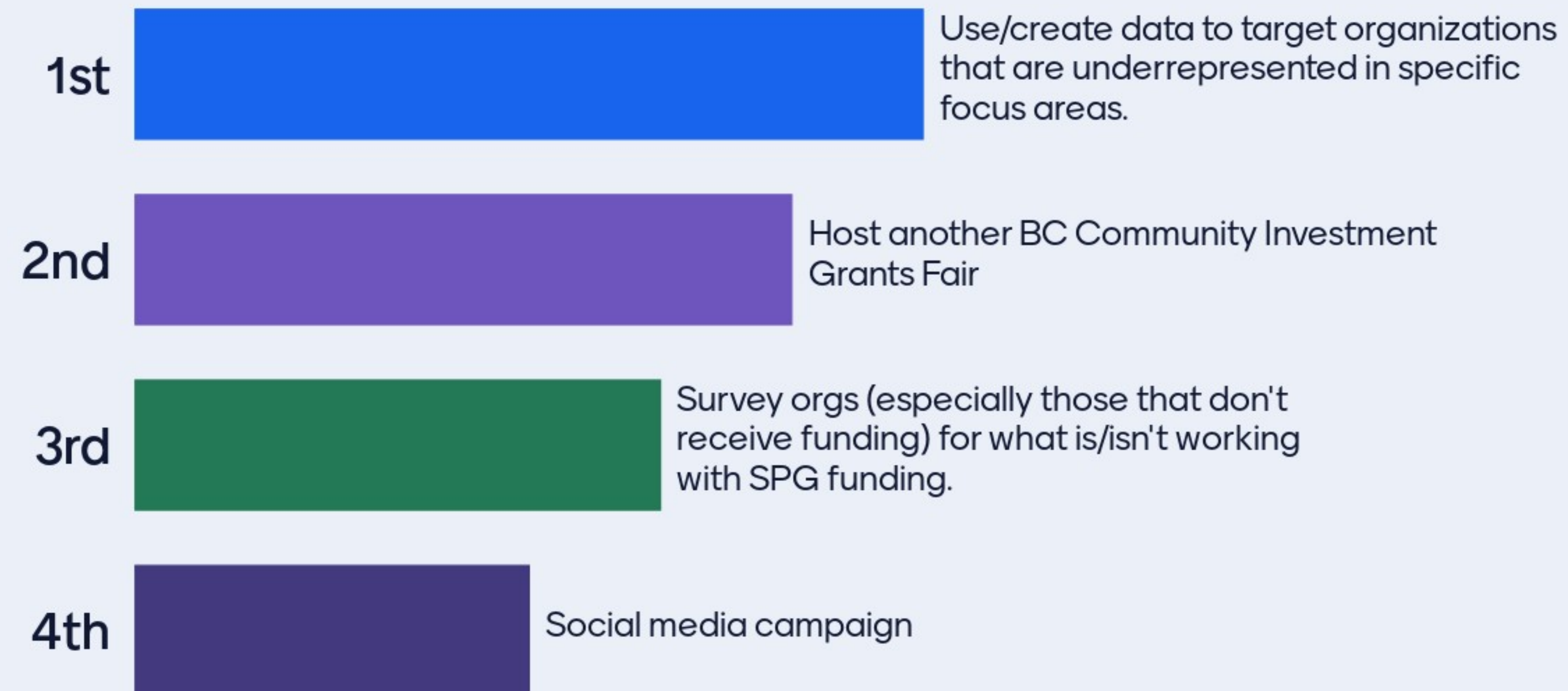
# Process Improvements

FY26 Strategic Partnership Grants





# Community Outreach Improvements



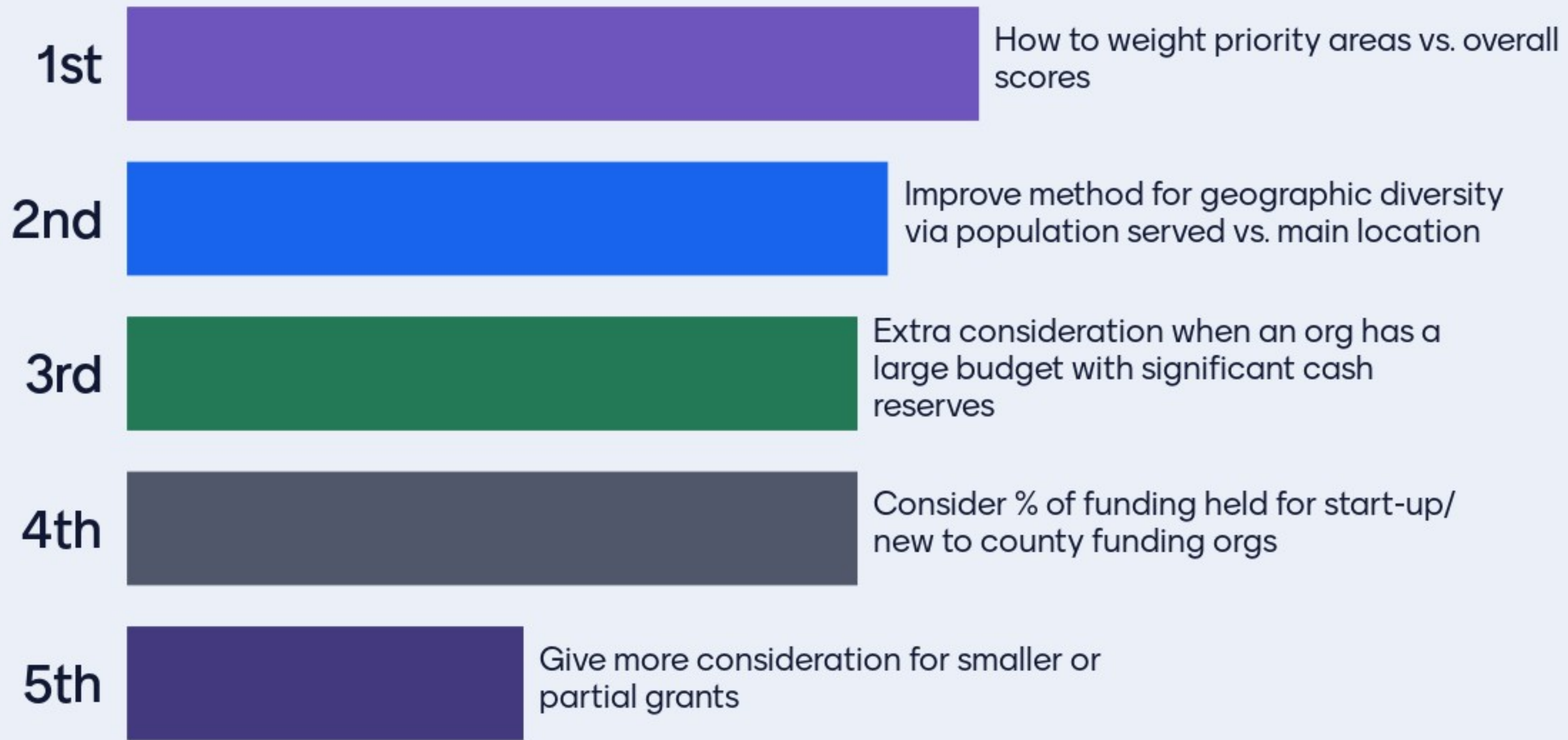


# Application & Grant Guidelines

- 1st  Limit orgs to only apply for one SPG project per year
- 2nd  Don't fund capital projects
- 3rd  Examine why Environment projects typically have fewer applications
- 4th  Emphasize measurable objectives to include examples in the application
- 5th  Ask for net assets in future applications to help determine need for project costs (especially with capital requests)
- 6th  Broaden more accessible application design to promote equity in the process



# Proposal Process





# Funding Recommendations

1st



Lock in funding scenario methodology before awards are determined

2nd



Lower maximum request amount to include smaller projects



# Other

