



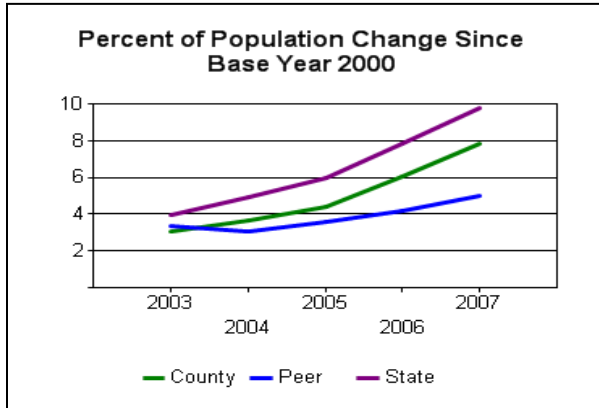
# Population Demographics

<b>Buncombe County Demographic Data Census Quick Facts (2009 estimates)</b>	<b>Buncombe County</b>	<b>North Carolina</b>
Population, 2009 estimate	231,452	9,380,884
Population, percent change, April 1, 2000 to July 1, 2009	12.2%	16.6%
Population estimates base (April 1) 2000	206,270	8,046,406
Persons under 5 years old, percent, 2009	6.1%	7.1%
Persons under 18 years old, percent, 2009	20.8%	24.3%
Persons 65 years old and over, percent, 2009	15.9%	12.7%
Female persons, percent, 2009	52.0%	51.1%
White persons, percent, 2009 (a)	90.0%	73.7%
Black persons, percent, 2009 (a)	7.1%	21.6%
American Indian and Alaska Native persons, percent, 2009 (a)	0.4%	1.3%
Asian persons, percent, 2009 (a)	1.1%	2.0%
Native Hawaiian and Other Pacific Islander, percent, 2009 (a)	0.1%	0.1%
Persons reporting two or more races, percent, 2009	1.2%	1.3%
Persons of Hispanic or Latino origin, percent, 2009 (b)	4.6%	7.7%
White persons not Hispanic, percent, 2009	85.6%	66.8%
Living in same house in 1995 and 2000, pct 5 yrs old & over	53.0%	53.0%
Foreign born persons, percent, 2000	3.9%	5.3%
Language other than English spoken at home, pct age 5+, 2000	5.9%	8.0%
Mean travel time to work (minutes), workers age 16+, 2000	21.1	24.0
Homeownership rate, 2000	70.3%	69.4%
Housing units in multi-unit structures, percent, 2000	15.5%	16.1%
Median value of owner-occupied housing units, 2000	\$119,600	\$108,300
Land area, 2000 (square miles)	655.99	48,710.88
Persons per square mile, 2000	314.5	165.2



Source: <http://quickfacts.census.gov/qfd/states/37/37021.html>

### Buncombe County Population Change

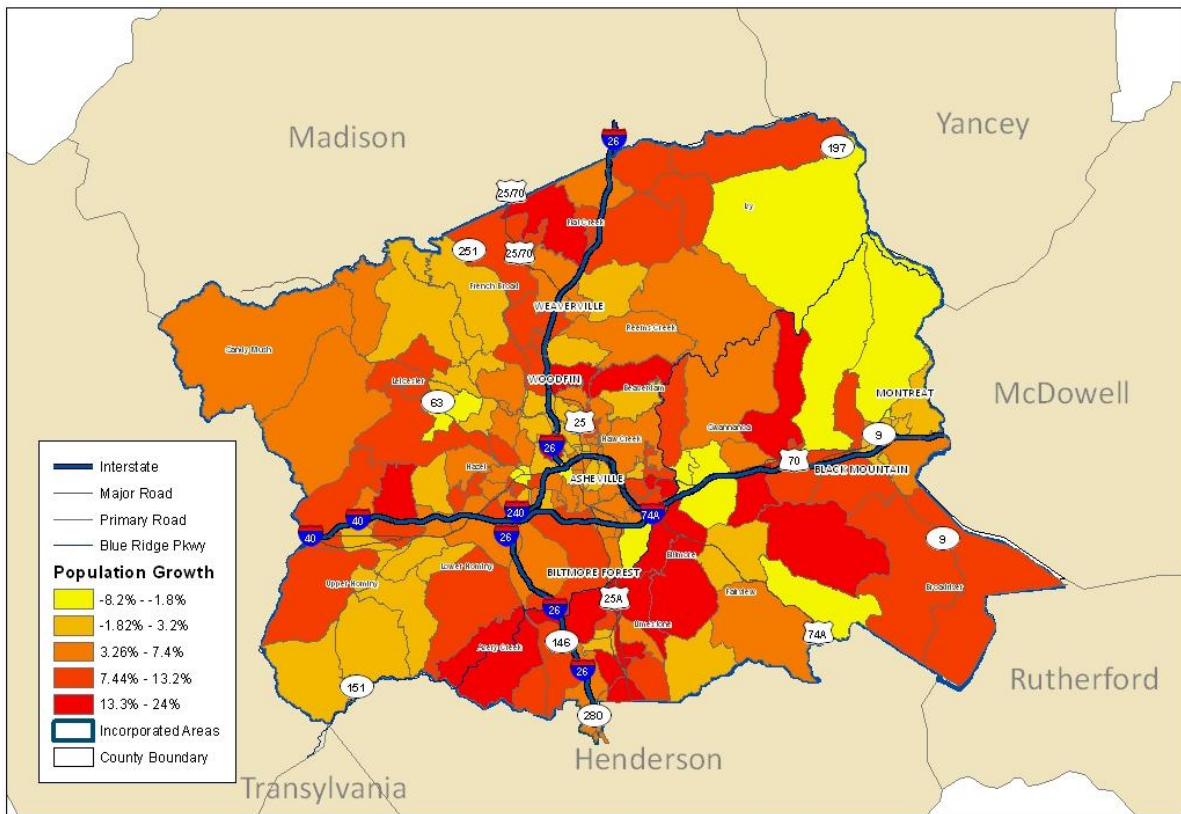


### Population Change – Raw Values

Year	County	Peer Avg.	State
2003	213,353	126,989	8,411,092
2004	214,588	126,612	8,489,064
2005	216,059	127,330	8,570,234
2006	219,446	128,026	8,719,727
2007	223,155	129,033	8,877,950

Source: NC CATCH at <http://www.ncpublichealthcatch.com>

### Spatial Analysis of Population Change – Buncombe County



### Buncombe County Census Data

Produced By: Buncombe County GIS Office, November 2010

Population Growth 2000 - 2005



Spatial analysis uses color variations to represent the areas of the county with the greatest change in population. The areas in yellow experienced a decrease in population during 2000 - 2005, whereas the areas with bright red have experienced between 13.3% - 24% growth in population during the same period.

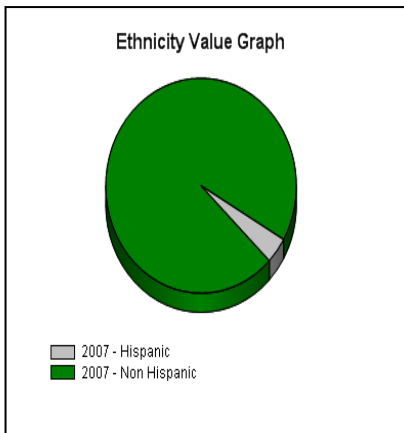
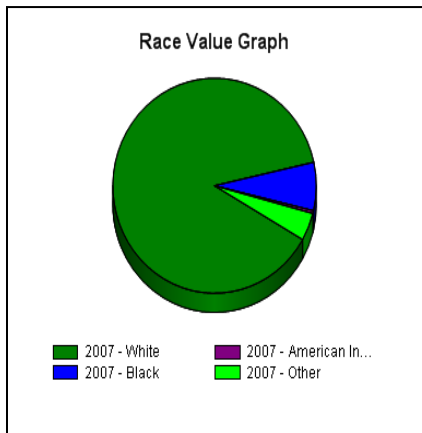
Source: Maps created by Buncombe County Information Technology Department, GIS Unit.



Using Census population estimates, it appears that Buncombe County’s population has increased by nearly 10,000 people during 2003 to 2007, representing an increase of 4.9%, similar to an increase of 5.5% in North Carolina’s population during the same period. By comparison, Peer county averages (Burke, Randolph and Davidson) indicate a very slight growth of 1.6% during 2003 – 2007.

Using Buncombe’s 2009 population estimate of 231,452, it appears that the county’s population increased by another 3.7% between 2007 and 2009. If similar growth continues, population estimates for 2010 could exceed 235,000.

### Buncombe County Population Breakdown by Race and Ethnicity



	Number
<b>White</b>	196,747
<b>Black</b>	16,162
<b>American Indian</b>	965
<b>Other</b>	9,281

	Number
<b>Hispanic</b>	8,813
<b>Non Hispanic</b>	214,312

Buncombe County’s 2007 population estimate is 223,155.

Percent population by Race:

White = 88%

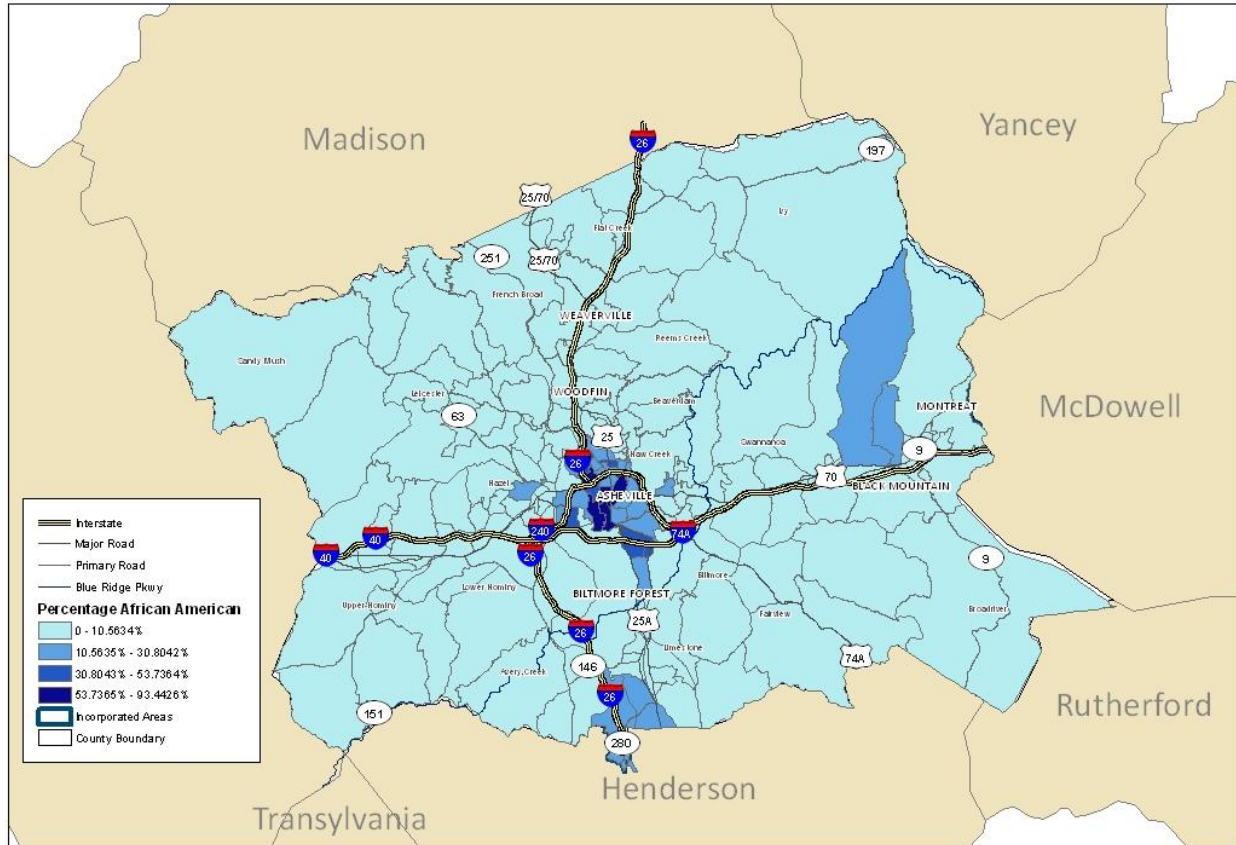
Black = 7%

Other = 5%

Estimated Hispanic population in 2007 is 3.9% and in 2009 is estimated to be 4.6%.



## Spatial Analysis of Black population in Buncombe County by Census Block Group



Produced By: Buncombe County GIS Office, November 2010

### Buncombe County Census Data

Concentration of African American People

0 0.5 1 2 3 4 Miles



### 2000 – 2005 composition of Black population by Census Block Group:

Legend:

Aqua = 0 - 10.56%

Lt Blue = 10.56% - 30.80%

Med Blue = 30.80% - 53.73%

Dark Blue = 53.73% - 93.44%

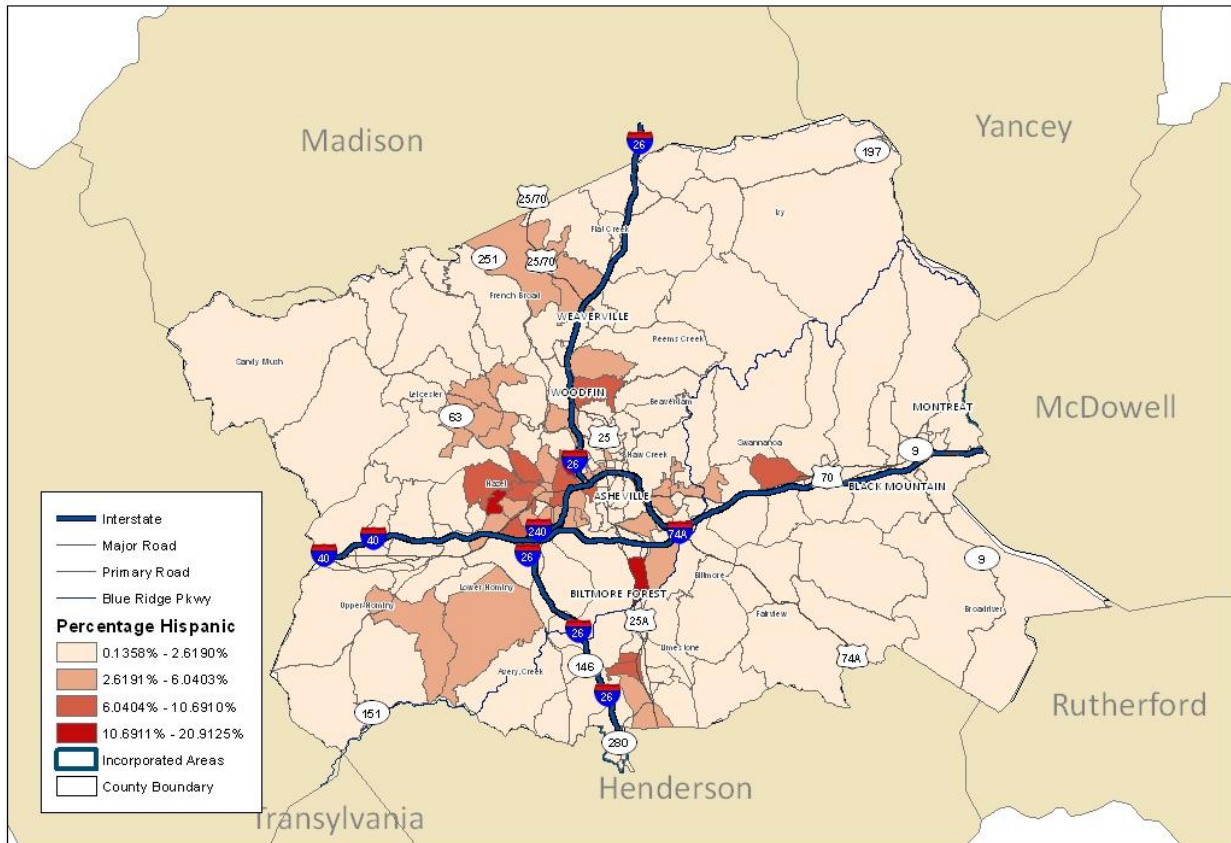
Spatial analysis uses color variations to represent the percentage of Black population living in census block groups. The Medium and Dark Blue represent census block groups with higher percentages, with the greatest concentration of Black population living in more urban areas, mostly in the city of Asheville, NC.

Source: Maps created by Buncombe County Information Technology Department, GIS Unit.





## Spatial Analysis of Hispanic population in Buncombe County by Census Block Group



Produced By: Buncombe County GIS Office, November 2010

### Buncombe County Census Data

Concentration of Hispanic People

0 0.5 1 2 3 4 Miles



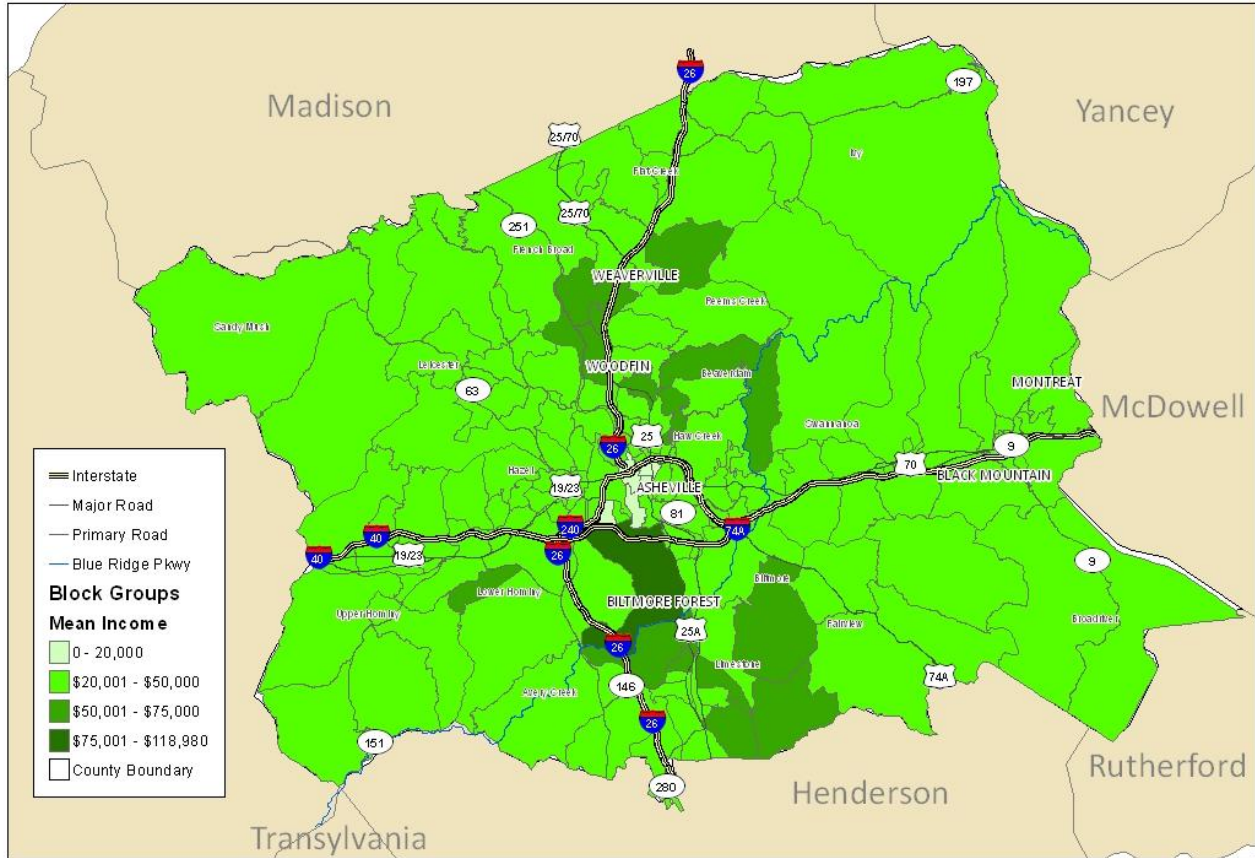
#### 2000 – 2005 composition of Hispanic population by Census Block Group:

Spatial analysis uses color variations to represent the percentage of Hispanic population living in census block groups. The deeper the color becomes the higher the percent Hispanic population is, with the highest percent appearing in Red. In comparison to the Black population living in Buncombe, the spatial analysis indicates that Hispanic population lives in many census block groups throughout the county, primarily concentrated in West/Northwest areas of the county and within the city of Asheville, NC.

Source: Maps created by Buncombe County Information Technology Department, GIS Unit.



## Spatial Analysis of Median Income in Buncombe County by Census Block Group



Produced By: Buncombe County GIS Office, November 2010

### Buncombe County Census Data

Income by Census Block Group (2000)



### 2000 – 2005 Median Income levels by Census Block Group:

Using median income per census block group is the best way to map income. The very lightest green indicates the census block groups with the lowest **median income levels**, primarily located in the most urban area of the county (Asheville). A majority of the block groups have median incomes that fall within \$20,000 - \$50,000.

Source: Maps created by Buncombe County Information Technology Department, GIS Unit.



## Buncombe County Employment Data

Employment by type of Industry	% working population
Education services, health care and social assistance	25%
Retail Trade	13%
Arts, entertainment, recreation, food and accommodation services	12%
Manufacturing	12%
Professional, scientific, administration, waste management	10%
Financial, insurance, real estate, rental / leasing	5%
Source: American Community Survey (US Census, 2009 population estimates)	

Largest Employment Categories	% working population
Management, professional and related services	36%
Sales and office	25%
Service occupations	20%
Production and transport of goods	11%
Construction, extraction, maintenance and repair services	8%
Source: American Community Survey (US Census, 2009 population estimates)	

### Employers and Occupations

Among the most common types of employee industries were educational services, health care and social assistance, 25%; Retail, 13%; Leisure and hospitality, 12%; and Manufacturing, 12%.

Common types of occupations were Professional and business, 35%; Sales and office occupations, 25%; Service occupations, 20%; Production, transportation, and material moving, 11%; and Construction, maintenance, and repair occupations, 8%.

76% of the people employed were Private wage and salary workers; 16% were Federal, state, or local government workers; and 8% were Self-employed in own-not incorporated businesses.