

FY22-23 Batterer Intervention Services

Overview

Department Division: *Family Justice Center*

Contract Name: *Batterer Intervention Services*

Supplier Name: *SPARC Foundation Inc*

Funding Source: *County Funds*

Contract Period: *July 1, 2022 through June 30, 2023*

Reporting Frequency: Quarterly

Contract Synopsis: This agreement provides funding to SPARC to facilitate the Emerge Model Batterers Intervention Program with fidelity for perpetrators of domestic violence referred by, but not limited to, court orders, Pretrial Supervision, HHS Social Work, Helpmate, and any organization providing services at the Family Justice Center.

Reporting Highlights:

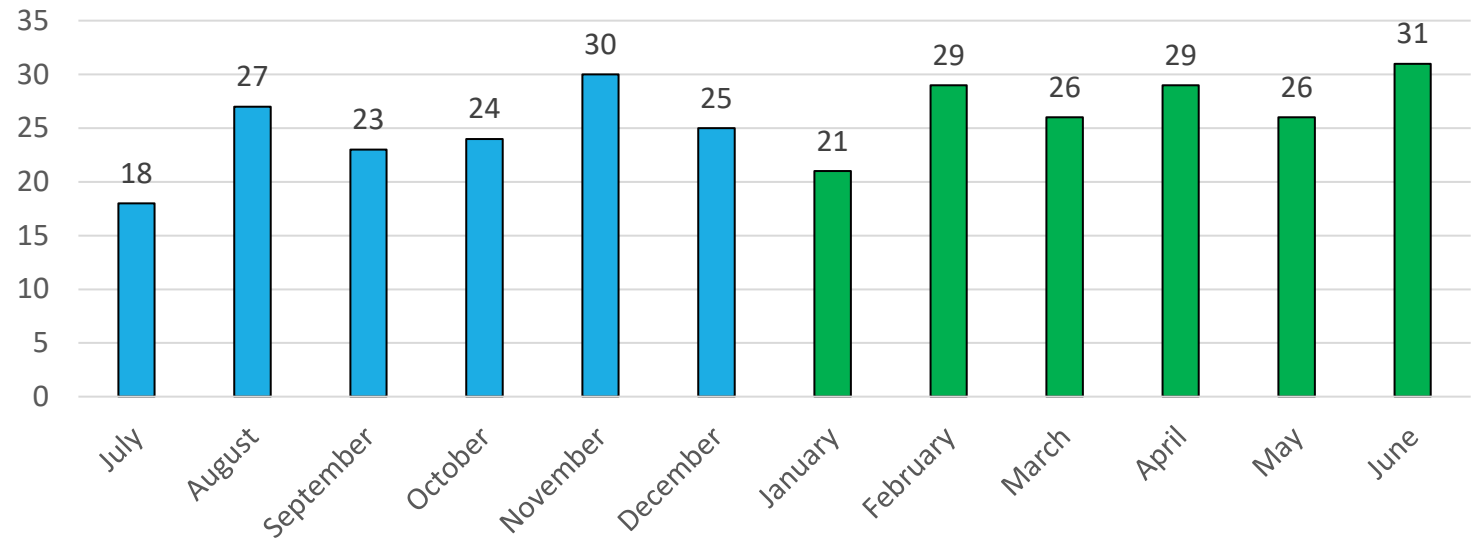
- *309 referrals received*
- *199 referrals were assessed and enrolled*
- *75 participants successfully completed the program*



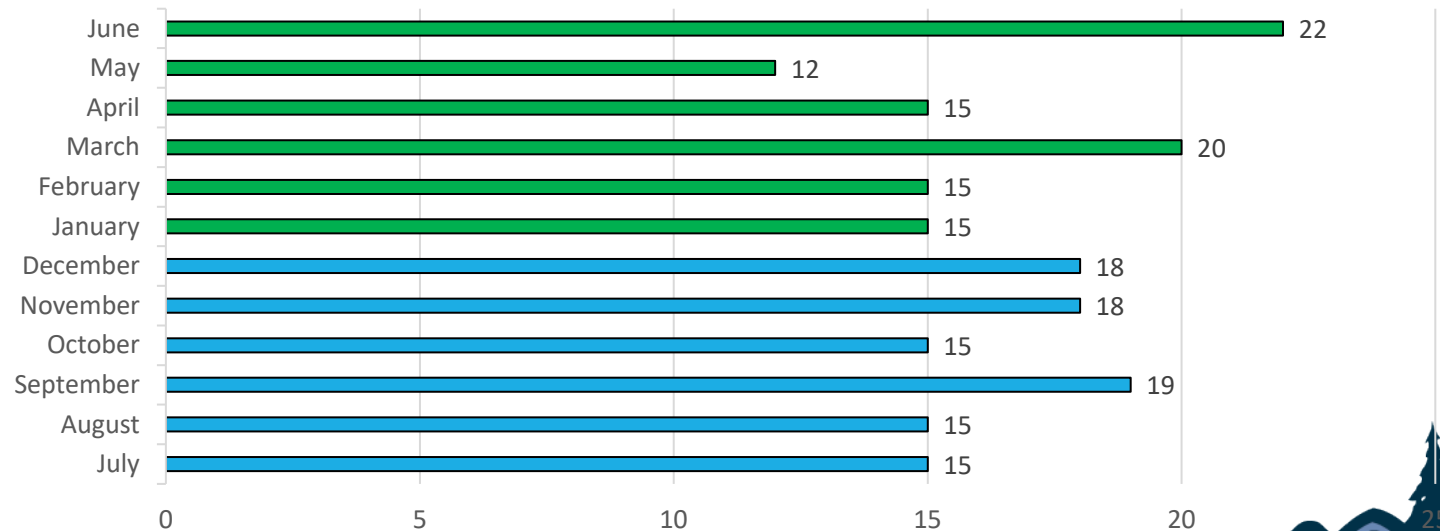
Referrals Received, Assessed, and Enrolled

- 309 referrals received
- 274 referrals were scheduled for intake
- 199 referrals were assessed and enrolled
- Average number of referrals per month is 25.75
- Average number of assessed and enrolled referrals was 16.58 per month

Total Referrals Received

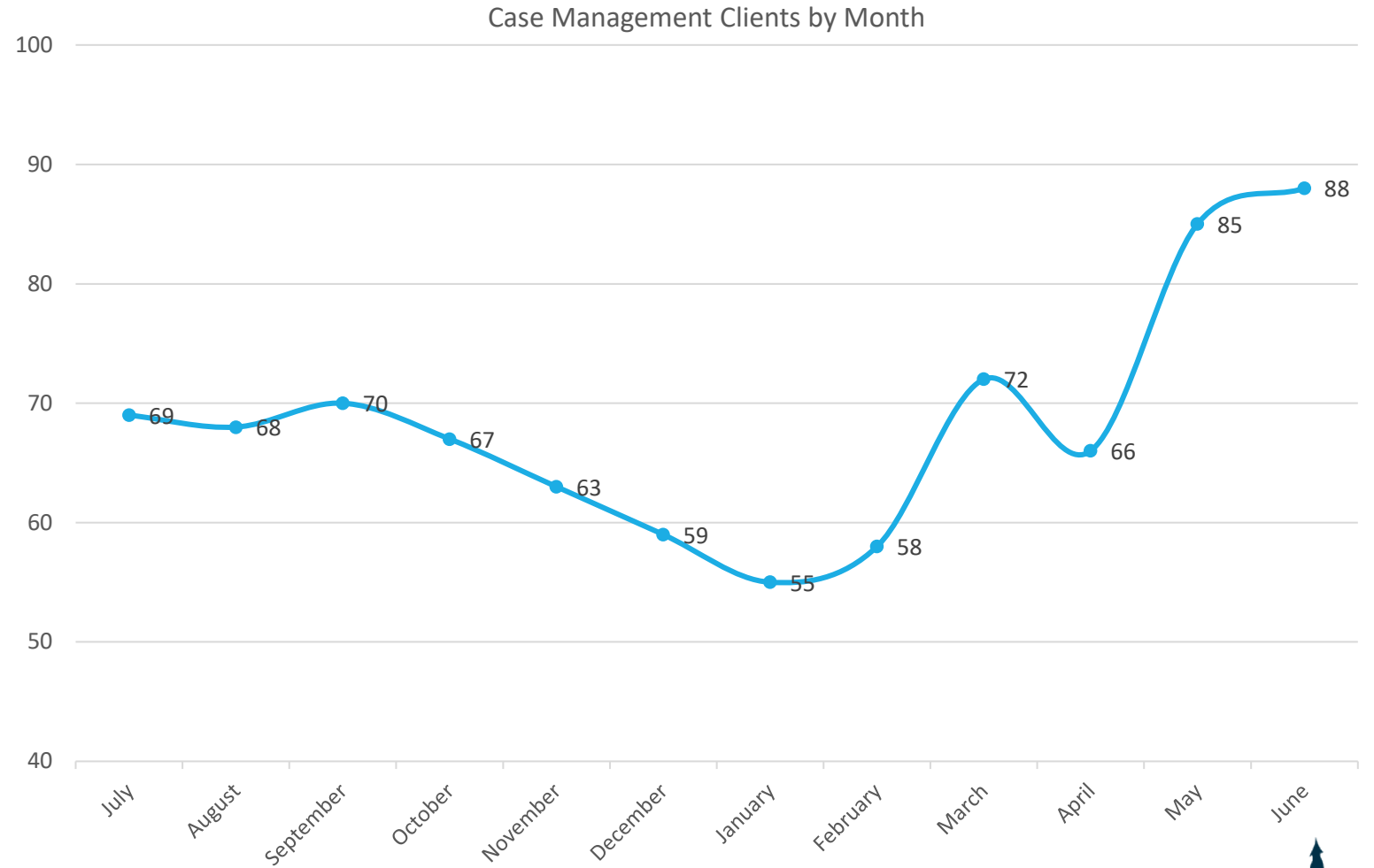


Referrals Assessed & Enrolled



Case Management Clients

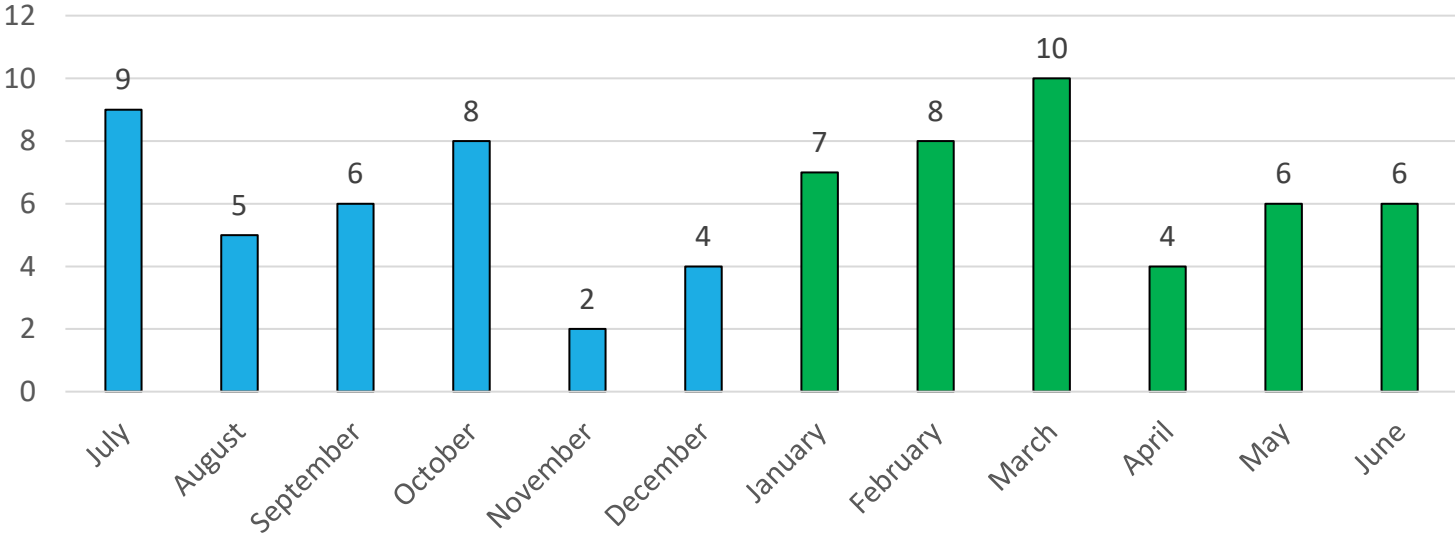
- Total of 820 case management clients
- Average number of case management clients per month is 68.33



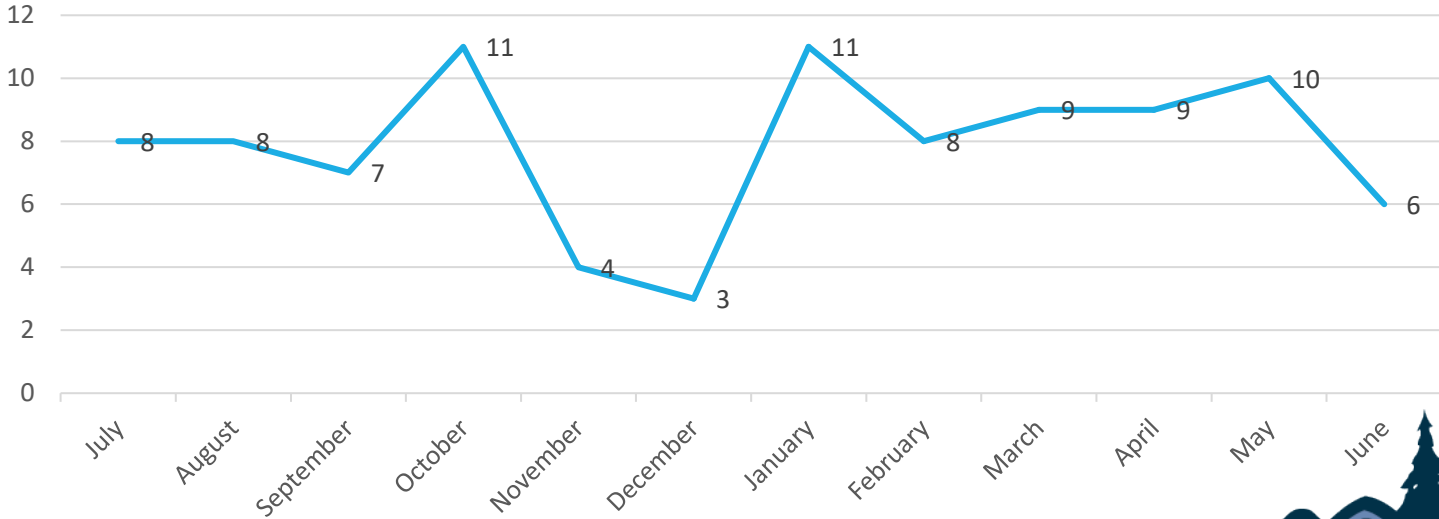
Program Completions & Withdraws

- 75 participants successfully completed the program
- Average number of participants who successfully completed the program is 6.25 per month
- 94 participants withdrew from the program
- Average number of participants who withdrew from the program is 7.83 per month

Participants Who Completed by Month



Participants Withdrawn From Program by Month

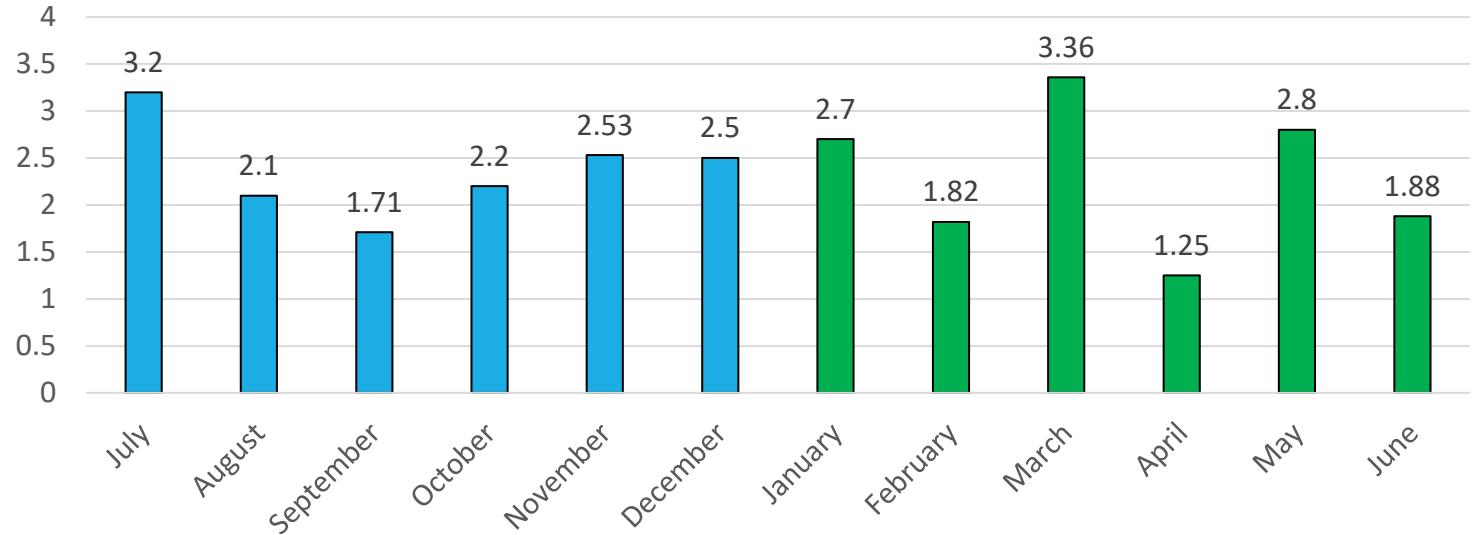


Recidivism, Average Adverse Childhood Experiences (ACEs) Score & Community Events Attended

- 4 participants had incidents of recidivism within 6 months post-service
- Average ACEs Score* at intake was 2.34 out of 10
- Staff attended a total of 60 community events (e.g., community collaboration, training opportunities, review teams) during the time period

*ACEs Scores are used to gain knowledge of the client's experience, informing how best to serve them

Average ACE Score by Month



Total Community Events Attended by Month

